



**HAL**  
open science

## Class I TCP in fruit development: much more than growth

Yushuo Gao, Farid Regad, Zhengguo Li, Julien Pirrello, Mondher Bouzayen,  
Benoît van Der Rest

► **To cite this version:**

Yushuo Gao, Farid Regad, Zhengguo Li, Julien Pirrello, Mondher Bouzayen, et al.. Class I TCP in fruit development: much more than growth. *Frontiers in Plant Science*, 2024, 15, pp.1411341. 10.3389/fpls.2024.1411341 . hal-04639797

**HAL Id: hal-04639797**

**<https://ut3-toulouseinp.hal.science/hal-04639797>**

Submitted on 9 Jul 2024

**HAL** is a multi-disciplinary open access archive for the deposit and dissemination of scientific research documents, whether they are published or not. The documents may come from teaching and research institutions in France or abroad, or from public or private research centers.

L'archive ouverte pluridisciplinaire **HAL**, est destinée au dépôt et à la diffusion de documents scientifiques de niveau recherche, publiés ou non, émanant des établissements d'enseignement et de recherche français ou étrangers, des laboratoires publics ou privés.



Distributed under a Creative Commons Attribution 4.0 International License



## OPEN ACCESS

## EDITED BY

Claudio Bonghi,  
University of Padua, Italy

## REVIEWED BY

Livio Trainotti,  
University of Padua, Italy  
Neftali Ochoa-Alejo,  
Centro de Investigación y de Estudios  
Avanzados del Instituto Politécnico Nacional,  
Mexico

## \*CORRESPONDENCE

Benoît Van Der Rest

✉ benoit.van-der-rest@toulouse-inp.fr

RECEIVED 02 April 2024

ACCEPTED 13 May 2024

PUBLISHED 28 May 2024

## CITATION

Gao Y, Regad F, Li Z, Pirrello J, Bouzayen M  
and Van Der Rest B (2024) Class I TCP in fruit  
development: much more than growth.  
*Front. Plant Sci.* 15:1411341.  
doi: 10.3389/fpls.2024.1411341

## COPYRIGHT

© 2024 Gao, Regad, Li, Pirrello, Bouzayen and  
Van Der Rest. This is an open-access article  
distributed under the terms of the [Creative  
Commons Attribution License \(CC BY\)](#). The  
use, distribution or reproduction in other  
forums is permitted, provided the original  
author(s) and the copyright owner(s) are  
credited and that the original publication in  
this journal is cited, in accordance with  
accepted academic practice. No use,  
distribution or reproduction is permitted  
which does not comply with these terms.

# Class I TCP in fruit development: much more than growth

Yushuo Gao<sup>1,2</sup>, Farid Regad<sup>1</sup>, Zhengguo Li<sup>2,3</sup>, Julien Pirrello<sup>1</sup>,  
Mondher Bouzayen<sup>1,3</sup> and Benoît Van Der Rest<sup>1\*</sup>

<sup>1</sup>Laboratoire de Recherche en Sciences Végétales - Génomique et Biotechnologie des Fruits, Université de Toulouse, Centre national de la recherche scientifique (CNRS), Université Toulouse III - Paul Sabatier (UPS), Toulouse-Institut National Polytechnique (INP), Toulouse, France, <sup>2</sup>Key Laboratory of Plant Hormones and Development Regulation of Chongqing, School of Life Sciences, Chongqing University, Chongqing, China, <sup>3</sup>Center of Plant Functional Genomics, Institute of Advanced Interdisciplinary Studies, Chongqing University, Chongqing, China

Fruit development can be viewed as the succession of three main steps consisting of the fruit initiation, growth and ripening. These processes are orchestrated by different factors, notably the successful fertilization of flowers, the environmental conditions and the hormones whose action is coordinated by a large variety of transcription factors. Among the different transcription factor families, TEOSINTE BRANCHED 1, CYCLOIDEA, PROLIFERATING CELL FACTOR (TCP) family has received little attention in the frame of fruit biology despite its large effects on several developmental processes and its action as modulator of different hormonal pathways. In this respect, the comprehension of TCP functions in fruit development remains an incomplete puzzle that needs to be assembled. Building on the abundance of genomic and transcriptomic data, this review aims at collecting available *TCP* expression data to allow their integration in the light of the different functional genetic studies reported so far. This reveals that several Class I *TCP* genes, already known for their involvement in the cell proliferation and growth, display significant expression levels in developing fruit, although clear evidence supporting their functional significance in this process remains scarce. The extensive expression data compiled in our study provide convincing elements that shed light on the specific involvement of Class I *TCP* genes in fruit ripening, once these reproductive organs acquire their mature size. They also emphasize their putative role in the control of specific biological processes such as fruit metabolism and hormonal dialogue.

## KEYWORDS

teosinte branched, cycloidea, proliferating cell factor (TCP), class I TCP, transcription factor, fruit development, fruit ripening

## 1 Introduction

In addition to their major importance in human nutrition, fruits have become a vast area of investigation in recent decades given their contribution to the understanding of the evolutionary history of angiosperms (Seymour et al., 2013) through their role in seed development and dispersal. A deeper understanding of the mechanisms behind the

development and ripening of fleshy fruits is of major interest considering the wide range of applications it opens up for plant breeding, improvement of quality attributes and post-harvest handling as well as technological value. Transcription factors (TFs) are instrumental in mediating the transcriptomic reprogramming driving the developmental processes underpinning organ and tissue differentiation. Among the many TF families involved in fruit development, MADS-box TFs have been documented as the core contributors, as evidenced by the role of the master regulators, RIN, TAGL1, and MBP3 in the control of fruit ripening and locular gel differentiation in tomato (Vrebalov et al., 2002, 2009; Zhang et al., 2019b; Huang et al., 2021). The involvement of other TF families such as NAC, ERF, ARF or DOF has also been well documented (Hao et al., 2015; Liu et al., 2020; Forlani et al., 2021; Chirinos et al., 2023; Zou and Sun, 2023) and likewise, MYB TFs have been reported to actively contribute to fruit quality through the control of texture, flavor and phenolic and carotenoid metabolism (Allan and Espley, 2018). Overall, it is now well established that fleshy fruit development is made of a series of developmental transitions involving almost all types of TF families even though little is known about the specific role of many of these transcriptional regulators. In this view, the TCP transcription family exemplifies this lack of knowledge. Members of this transcription family genes have largely been described and reviewed for their effect on several developmental processes such as cell growth and proliferation, germination, embryogenesis, leaf and flower morphogenesis, biotic and abiotic stress responses (Dhaka et al., 2017; Lan and Qin, 2020; Viola and Gonzalez, 2023; Viola et al., 2023). In the previous decade, the active expression of *TCP* genes has been reported in a large number of species cultivated for its fruits such as tomato (Parapunova et al., 2014), *Prunus mume* (Zhou et al., 2016), strawberry (Wei et al., 2016), grapevine (Jiu et al., 2019; Leng et al., 2019), banana (Wang et al., 2022a), apple (Tabarelli et al., 2022), eggplant (Li et al., 2022), citrus (Liu et al., 2022a), passion fruit (Rizwan et al., 2022), cucumber (Ren et al., 2023), kiwifruit (Li et al., 2024) and pepper (Dong et al., 2024). Despite these numerous inventories, the impacts of *TCP* on fruit development remain enigmatic.

The *TCP* gene family was first described as a small group of plant-specific transcription factors sharing a conserved domain, named *TCP* after the three first characterized family members, TEOSINTE BRANCHED (TB) 1 from maize, CYCLOIDEA (CYC) from *Antirrhinum majus*, and PROLIFERATING CELL FACTORS (PCFs) from rice (Cubas et al., 1999). The *TCP* domain consists of a non-canonical basic-helix-loop-helix (bHLH) structure that allows DNA binding and protein-protein interactions (Cubas et al., 1999; Nicolas and Cubas, 2016). The protein crystal structure of rice *TCP* OsPCF6 revealed that the *TCP* domain functions as a dimer, with two *TCP* domains closely intertwined into a stable conformation (Sun et al., 2020). In addition, the DNA-*TCP*-domain complex structures were determined on AtTCP15 and AtTCP10: the homodimeric *TCP* domains adopt a three-site recognition mode for double-stranded DNA through a short pair of  $\beta$ -strands formed in the dimer interface completed with two basic flexible loops from each monomer (Zhang et al., 2023). Based on phylogenetic analysis, *TCP*s can be classified into two homology classes: Class I and Class

II with the latter being further divided into two subclasses: the CIN-*TCP* subclass and the CYC/TB1 subclass (Cubas et al., 1999). Members of Class I *TCP* display a shorter *TCP* domain with a 4 amino acid deletion in the basic region and also exhibit a conserved region close to the *TCP* domain C-terminal extremity (Zhou et al., 2022). Both CIN and CYC/TB1 proteins are highly conserved and have been shown to be involved in controlling leaf morphology and size, petal development, trichome formation, and plant flowering (Bresso et al., 2018; Sarvepalli and Nath, 2018; Lan and Qin, 2020; Rath et al., 2022). In addition, the expression of *CIN* genes is controlled by the well-conserved microRNA319 (Bresso et al., 2018). To our knowledge, few studies reported the involvement of Class II *TCP*s in fruit development or ripening; only Class II AtTCP4 was recently found to contribute to the determination of ovule identity (Lan et al., 2023) and to the specification of apical gynoecium (Wang et al., 2024). Therefore, the current review will focus on Class I *TCP* functions in the frame of fruit development and ripening following flower fertilization. It aims at integrating recent literature and available expression data on Class I *TCP*s in order to draw a first picture of the potential role of this class of transcription factors in fruit biology.

## 1.1 Expression patterns of Class I *TCP* genes suggesting multiple actions in fruit development and ripening

Over the past decade, NGS technologies have enabled the generation of ever-increasing amounts of genomic and transcriptomic data from a large panel of plant species. Taking advantage of these resources, we performed a comprehensive survey to gain insight into the expression patterns in fruit organs of *TCP*-encoding genes. Interestingly, monitoring the expression of Class I *TCP* TF genes either by qRT-PCR or by RNAseq in plant species representative of a large diversity of botanical families (Table 1), revealed that *TCP*s are expressed in several fleshy fruits such as the dicots apple, pear, strawberry, blueberry, cucumber, tomato and grape and the monocots banana.

Table 1 shows that several Class I *TCP* genes are preferentially expressed at early stages of fruit development while others exhibit higher expression levels at late developmental stages, from ripening initiation to full-ripe fruit (Table 1). To further refine the classification of the *TCP* genes inventoried in Table 1, we built a dedicated phylogenetic tree based on the genome annotations of five species representative of Angiosperm families: *Arabidopsis*, tomato, grapes, rice and maize (*Arabidopsis thaliana*, *Solanum lycopersicum*, *Vitis vinifera*, *Oryza sativa* and *Zea mays* respectively). The tree divides Class I *TCP* family into 4 sub-groups encompassing the majority of the annotated Class I *TCP* (Figure 1). Interestingly, these sub-groups can be associated to the presence or absence of conserved motifs predicted with the MEME software (Bailey and Elkan, 1994), thus consolidating the proposed phylogeny (Supplementary Table S1). When available, all the *TCP* genes listed in Table 1 were classified using the groups deduced from the phylogeny (Supplementary Table S2). *TCP* genes from each group are found to be expressed during fruit development or

TABLE 1 List of Class I TCP genes expression characterized in fruits.

Plant species	Class I TCP genes expression situation	References
Apple ( <i>Malus domestica</i> )	1. Expressed in fruits and downregulated before ripening: <i>MdTCP22</i> , <i>MdTCP32</i> and <i>MdTCP47</i> 2. Expressed in fruits and upregulated before ripening: <i>MdTCP1</i> , <i>MdTCP13</i> and <i>MdTCP14</i>	(Xu et al., 2014)
Chinese White Pear ( <i>Pyrus bretschneideri</i> )	1. Highly expressed in ovary: <i>PbTCP32</i> and <i>PbTCP33</i> 2. Highly expressed in fruits: <i>PbTCP2/5/7/12/13/17/21/23/24/34</i> (1) <i>PbTCP23</i> and <i>PbTCP24</i> increased firstly and then decreased during fruit development (2) <i>PbTCP7</i> reached a peak at 63 DAP	(Zhao et al., 2021)
Strawberry ( <i>Fragaria vesca</i> )	1. Preferentially expressed in half red fruits: <i>FvTCP19</i> 2. Preferentially expressed in ripe fruits: <i>FvTCP9</i> , <i>FvTCP12</i> and <i>FvTCP17</i>	(Wei et al., 2016)
Blueberry ( <i>Vaccinium</i> spp.)	1. Preferentially expressed in green fruits: <i>VcTCP31</i> , <i>VcTCP2</i> , <i>VcTCP8</i> , <i>VcTCP43</i> , and <i>VcTCP38</i> 2. Preferentially expressed in ripening fruits (pink fruits): <i>VcTCP60</i> , <i>VcTCP4</i> , and <i>VcTCP54</i>	(Li et al., 2021)
Tomato ( <i>Solanum lycopersicum</i> )	1. Expressed in the whole berry development process: <i>SITCP27</i> 2. Preferentially expressed during fruit ripening: <i>SITCP12</i> , <i>SITCP15</i> , <i>SITCP18</i>	(Parapunova et al., 2014)
Grape (1) ( <i>V. vinifera</i> and <i>Vitis labrusca</i> cv. "Jumeigui")	1. Preferentially expressed in growing green berries: <i>VvTCP7</i> , 9, 14 and 16 2. Preferentially expressed in immature green berries: <i>VvTCP3</i> , 6, 14, 15 3. Preferentially	(Jiu et al., 2019)

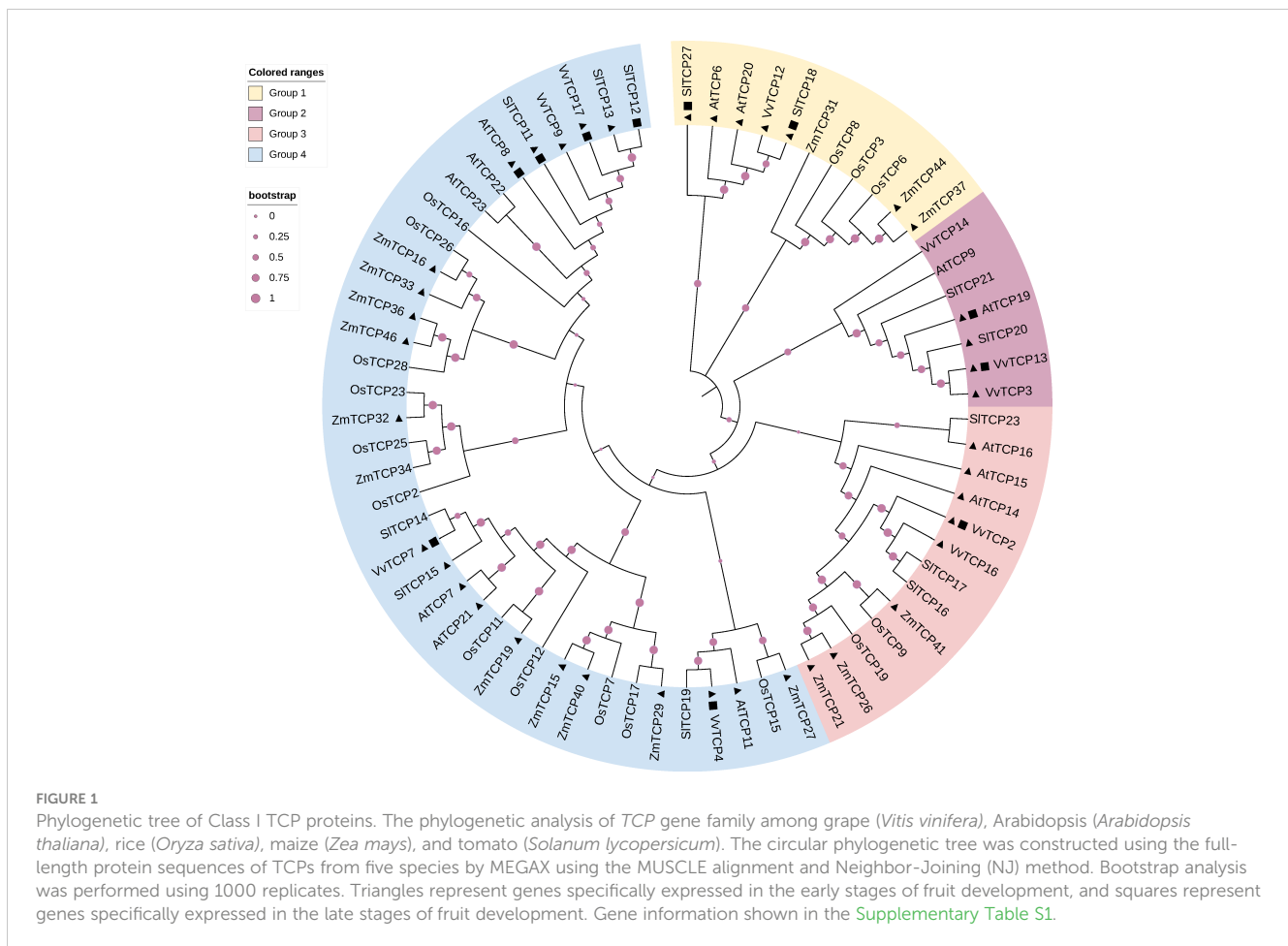
(Continued)

TABLE 1 Continued

Plant species	Class I TCP genes expression situation	References
	expressed in ripe berries: <i>VvTCP17</i> 4. Expressed in the whole berry development process: <i>VvTCP5</i>	
Grape (2) ( <i>Vitis vinifera</i> cv. "Corvina")	1. Preferentially expressed in green fruits: <i>VvTCP2</i> , 3, 4, 7, 9, 12 and 16 2. Preferentially expressed at veraison or in ripe fruits: <i>VvTCP17</i> and <i>VvTCP13</i>	(Leng et al., 2019)
Cucumber ( <i>Cucumis sativus</i> L.)	1. Preferentially expressed in carpel: <i>CsTCP1</i> , <i>CsTCP15</i> , <i>CsTCP16</i> , <i>CsTCP18</i> and <i>CsTCP19</i>	(Wen et al., 2020)
Banana ( <i>Musa acuminata</i> L.)	1. Expressed during fruit development (0 and 20 DAF): <i>MaPCF1</i> , <i>MaPCF2</i> , <i>MaPCF4</i> , <i>MaPCF7</i> , <i>MaPCF10</i> , <i>MaPCF11</i> , <i>MaPCF12</i> , <i>MaPCF13</i> , <i>MaPCF19</i> , <i>MaPCF20</i> , <i>MaPCF22</i> , <i>MaPCF24</i> , <i>MaPCF25</i> and <i>MaPCF27</i> 2. Expressed during fruit ripening (80 DAF): <i>MaPCF2</i> , <i>MaPCF4</i> , <i>MaPCF11</i> , <i>MaPCF18</i> , <i>MaTCP24</i> and <i>MaPCF26</i> 3. Expressed during post-harvest stages (8 and 14 DPH): <i>MaPCF2</i> , <i>MaPCF8</i> , <i>MaPCF10</i> and <i>MaPCF26</i>	(Wang et al., 2022a)

ripening, thus suggesting a coordinated action of TCP factors as reported in other physiological processes in vegetative organs (Danisman, 2016; Viola et al., 2023).

Massive amounts of transcriptomics data generated either by RNAseq or microarrays, can be easily accessed via different datamining and visualization platforms such as BAR-ePlant (The Bio-Analytic Resource for Plant Biology) (Waese et al., 2017), GEO DataSets (Barrett et al., 2009, 2011), TomExpress (Zouine et al., 2017) or Tomato Expression Atlas (TEA) (Fernandez-Pozo et al., 2017; Shinozaki et al., 2018). Notably, these platforms allow the normalization of the signals from large datasets, enabling the comparative assessment of expression levels in different conditions (including different development stages). We collected



the expression patterns of Class I TCP genes from four plant species: tomato (*Solanum lycopersicum*) and grapes (*Vitis vinifera*) fleshy berries, maize (*Zea mays*) kernel and *Arabidopsis thaliana* dry silique. The expression data were extracted from BAR-ePlant for maize and Arabidopsis, from TomExpress for tomato and from GEO DataSets for grape and used to build heatmaps on representative stages for each fruit or imbedded seeds (Figure 2). For tomato, the interpretation of these heatmaps was completed by the analysis of TEA and TomExpress data to highlight the tissues and fruit developmental stages exhibiting preferential expression (Supplementary Table S1). These expression data suggest the involvement of several Class I TCP genes in fruit development, either at early (growth, immature fruit) or late stages (ripening, from its initiation to senescence). Among the TCP isoforms highly expressed in fruits, some display high expression levels in both vegetative and reproductive tissues (stems, shoot, leaves, seeds and fruits) while others exhibit preferential expression during fruit development or ripening (Supplementary Table S1). Notably, the TCPs expressed at the early stages of fruit development are also expressed in vegetative tissues. For instance, the Arabidopsis *AtTCP14* and *AtTCP15* are highly expressed in the carpel and the silique, but also in germinating seeds, shoot apex and leaves (Figure 2A; Supplementary Table S1). The expression of *SITCP12*, *SITCP15*, *SITCP18* have been reported in tomato fruit ripening, with *SITCP12* and *SITCP18* expression being related to the actions of the

master regulators of ripening *RIN*, *Cnr* and *AP2a* (Parapunova et al., 2014). Supporting these data, *SITCP12* and *SITCP18* display a preferential expression during fruit ripening (Figure 2B). By contrast, *SITCP11* and *SITCP15* genes are expressed in a wide variety of stages with a maximum in young fruits (3cm fruits in Figure 2B). Noteworthy, the TCP genes highly expressed in early fruit development exhibit a high expression in root, leaf, meristems and flower buds. More recently it was reported that *SITCP15* is a direct target of the kinase CDK8 and that the phosphorylated form is active in inducing pollen development (Xu et al., 2024). Altogether, these data suggest that *SITCP15* is involved in several developmental processes. In grape, Class I TCP genes are highly expressed in green berry (*VvTCP7* and *VvTCP12*) and exhibit also high expression in leaves and vegetative buds, while *VvTCP13* expression peaks only in ripe berries (Figure 2C). As for maize, the structure of the kernel with the fused pericarp and seed tegument did not allow to discriminate between early and late fruit development, although it appears that all the Class I TCPs expressed in endosperm growth display also expression in the pericarp (Figure 2D).

Highlighting the isoforms highly expressed in fruit development on the phylogenetic tree (Figure 1) failed to reveal any obvious correlation between the territories of expression and the clustering of the TCP isoforms within the different groups. Likewise, no obvious correlation was found when considering the expression

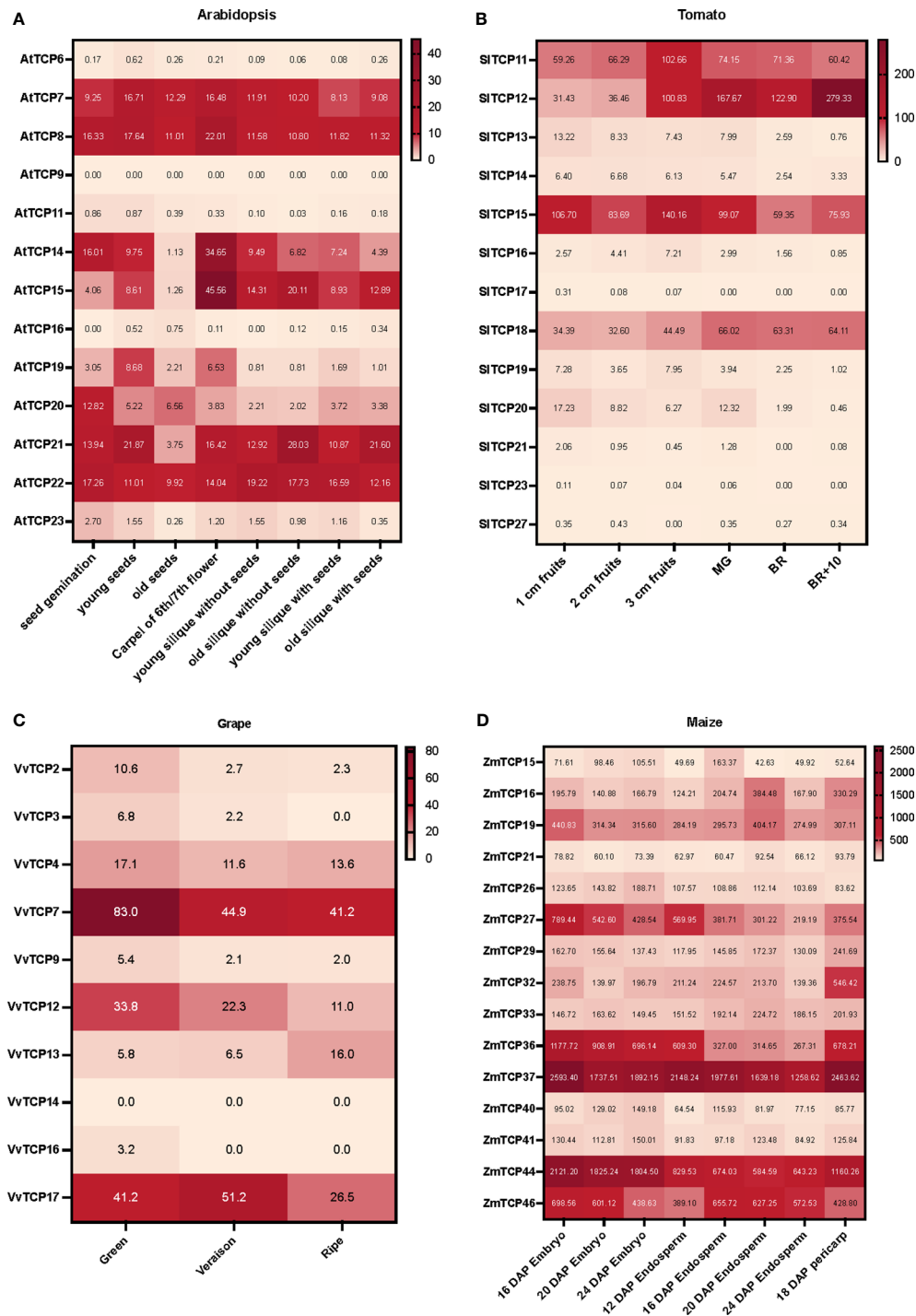


FIGURE 2

Heatmaps of transcript accumulation profiles of Class I TCP genes in (A) Arabidopsis (*Arabidopsis thaliana*), (B) tomato (*Solanum lycopersicum*), (C) grape (*Vitis vinifera* cv 'Corvina'), and (D) maize (*Zea mays*). The transcript accumulation data were obtained from BAR-ePlant for maize and Arabidopsis, from TomExpress for tomato and from GEO DataSets for grapes. It was visualized as heat maps using Prism 9. The color scale represents the transcript levels with increased (red) or decreased (white) transcript abundance.

studies reported in the literature (Supplementary Table S2). It is important to mention that the majority of Class I subclades are found in a wide range of land plant species, including the bryophyte *Sphagnum fallax* (Zhou et al., 2022), suggesting that unlike MADS-box transcription factors, the expression territory in reproductive organs is not a main driver of primary sequence evolution within Class I TCPs.

## 2 What is known about the functions of Class I TCP in fruit development?

The expression data presented in the first section enable to discriminate between the TCPs expressed in early fruit development encompassing the pre-mature stages and those expressed during the



ripening phase. Remarkably, *TCP* genes expressed at early stages of fruit development display high expression level in vegetative tissues. In contrast, *TCPs* expressed at later stages of fruit development show greater tissue specificity and reach their expression peak during the ripening process.

Class I *TCPs* have been reported to act as modulators of cell proliferation, expansion and endoreplication, as component of hormone's signaling cascades, often in response to environmental conditions, and also as regulators of leaf senescence or pigments accumulation (Viola et al., 2023). Very often, a single isoform can be involved in multiple mechanisms. For instance, *AtTCP15* was shown to operate in seed germination (Resentini et al., 2015), in auxin-mediated cell elongation (Ferrero et al., 2021), in cotyledon opening (Alem et al., 2022), in stamen development (Gastaldi et al., 2023), in the regulation of potato tuber sprouting via the modulation of the abscisic acid/gibberelic acid balance or in the modulation of anthocyanin biosynthesis (Viola et al., 2016; Ding et al., 2022; Wang et al., 2022b). Considering that all these mechanisms are also operating during fleshy fruit growth, tissues' differentiation and ripening, Class I *TCPs* can be viewed as potential regulators of different aspects of fruit development.

## 2.1 Class I *TCP* factors in early fruit development

Early fruit development can be seen as a series of processes starting with the flower fertilization and leading to an immature fruit. These sequential developmental processes encompass the fruit set, fruit growth, tissue differentiation and modification of cell metabolism and coincides with seed formation and maturation. In fleshy fruits, the growth and accumulation of metabolites often occur in carpels, but can also be in inner tissues such as locular tissue, placenta and columella in tomato, or in seed outgrowth (like the *Litchi chinensis* aril) or in flower receptacle (like strawberry). In tomato, early fruit development includes three physiological processes: fruit set, cell division and cell expansion (Gillaspy et al., 1993). Interestingly, the fruit growth relies on a combination of cell divisions and cell expansion, the latter being boosted by endoreplication leading to an increase of cell ploidy mainly in pericarp and locular tissue cells (Azzi et al., 2015; Tourdot et al., 2023).

Given that Class I *TCPs* act as modulators of cell division and elongation in a wide range of biological processes, it is tempting to speculate on the potential conservation of this regulatory roles for *TCP* expressed during fruit development. In Arabidopsis, *AtTCP14*, *AtTCP15* and *AtTCP8* are known to activate several cell-cycle and cell-proliferation genes while inhibiting endoreplication, since modifications of ploidy number has been reported in various mutant backgrounds (Kieffer et al., 2011; Li et al., 2012; Peng et al., 2015; Zhang et al., 2019a). Interestingly, these three genes correspond to three Class I *TCP* genes highly expressed in the carpel and the silique (Figure 2). Although altered silique architecture has been reported in *AtTCP15* SRDX dominant negative lines, such as replum enlargement in plants (Uberti-Manassero et al., 2012), clear data demonstrating the impact of *AtTCPs* regulation on Arabidopsis silique development are still missing.

Evidence documenting the function of Class I *TCPs* in early fruit development is also limited in other species. In wheat (*Triticum aestivum* L.), the phenotype displayed by the *Ta-TCP9-A* mutants suggests the existence of an action of this gene on seed and fruit growth (Zhao et al., 2018). Indeed, two independent loss-of-function mutants carrying distinct mutations in *TaTCP9-A* gene display an increased grain length, width, and weight associated with an increase in the spike length. It is noteworthy that *Ta-TCP9* belongs to the same group than *AtTCP14* and *AtTCP15* (*Ta-TCP9* being close to *OsTCP9*, Figure 1), but its contribution to the regulation of the elongation processes occurring in the grain and the floral pieces still requires solid validation given that the mutant lines harbor several mutations in their genome in addition to the one affecting the *TCP9* gene.

*TCPs* have also received attention regarding their role in cotton fiber development from the ovule surface. *GhTCP14*, a Class I *TCP* also belonging to the *AtTCP14/AtTCP15* clade, was proposed to regulate fiber development, particularly during the initiation and elongation stages which coincides with early fruit ripening (Wang et al., 2013). *GhTCP14* action seems to interfere with auxin signaling and may involve other Class I *TCP* genes co-expressed with *GhTCP14*, including *GhTCP7a*, *9b*, *15a/b/c*, *21*, and *22* (Li et al., 2017). This action can also be paralleled with the presumed function of *AtTCP14* and *AtTCP15* in trichomes' formation (Camoirano et al., 2020).

## 2.2 Class I *TCP* factors in fruit ripening

Mining the transcriptomic data highlighted the expression of different *TCP* genes at different stages of fruit ripening (Figure 2), showing that some isoforms are preferentially expressed during the ripening process of tomato and grape fruit (see section 1). While similarities between fruit ripening and leaf senescence mechanisms have been suggested by several authors (Picton et al., 2011; Gapper et al., 2013; Wang et al., 2017; Ma et al., 2018, 2019), it would, however, be appropriate to distinguish between the ripening process *sensu stricto* and the over-ripening phase (Gapper et al., 2013). Obviously, both ripening and senescence involve large gene expression and metabolism reprogramming. A striking similarity between the two processes is the important role of the plant hormone ethylene, known to be a key regulator of the two processes (Picton et al., 2011; Sharma et al., 2021). Moreover, ABA, known as a plant senescence hormone, has been documented to impact fruit ripening (Ye et al., 2017; Kou et al., 2021; Gupta et al., 2022). At the cellular level, ripening and senescence share several common processes like chlorophyll breakdown and cell wall modifications (Forlani et al., 2019; Ling et al., 2021). In addition, several senescence-associated proteins are also associated with fruit ripening, including type 2C phosphatase SIIP2C (Jiang et al., 2023), isopentenyl transferase SIIP4 (Zhang et al., 2018) and the recently characterized VviNAC60 in grape (D'Inca et al., 2023).

In the last decade, several studies have shed light on the regulatory effect exerted by *TCP* on leaf senescence, indicating that different *TCP* isoforms can act either as negative or positive

regulators. For instance, overexpression of chrysanthemum gene *CmTCP14* in *Arabidopsis* results in delayed leaf senescence (Zhang et al., 2017), and *AtTCP20* inhibits the expression of the lipoxygenase *AtLOX2*, encoding a key enzyme in jasmonic acid biosynthesis, thus leading to impaired leaf senescence (Danisman et al., 2012). Similarly, cabbage *BrTCP21* delays leaf senescence by influencing the GA biosynthetic pathway (Xiao et al., 2019). By contrast, *BrTCP7* binds to the promoter regions of *BrOPR3* and *BrRCCR*, involved in jasmonic acid (JA) biosynthesis and chlorophyll breakdown respectively, thus suggesting that this TCP acts as a positive regulator of leaf senescence (Xu et al., 2019).

The study of *TCP* expression in fruit peach (*Prunus persicum*) development and ripening (Guo et al., 2018) highlighted the potential contribution of *PpTCP.A2*. Indeed, *PpTCP.A2* is expressed in fruit pre-ripening and its VIGS-induced silencing in peach fruit reveals an increase in ethylene production coinciding with an upregulation of *PpACS1*, encoding the enzyme that catalyzes the synthesis of ACC, the direct precursor of ethylene. The study suggested that the action of *PpTCP.A2* is reminiscent of *AtTCP20*, *CmTCP14* or *BrTCP21* action as negative regulator of leaf senescence (see above).

In banana (*Musa acuminata*), several *TCP* factors (*MaTCP15*, *MaTCP19*, *MaTCP20*, and *MaTCP22*) were found to be ethylene-inducible (Song et al., 2018). Interestingly, these authors suggested that *MaTCP20* could activate the promoters of two xyloglucan endotransglucosylase/hydrolases (*MaXTH10* and *MaXTH11*) since they contain the TCP-conserved (T/C) GGNCCCA regulatory elements and they can effectively bind *MaTCP20* protein as shown by EMSA and dual-luciferase assays. The data also suggest that *TCP* may impact fruit quality, since XTHs are involved in cell wall modification processes that accompany fruit softening.

Fruit color, an important quality trait, is controlled by *TCP* as suggested by different studies on anthocyanin accumulation. The overexpression of *FaTCP11* in strawberries (*Fragaria × ananassa*), a gene first identified by expression correlation network analysis on the transcriptomes of red ripe fruits from two parental lines and their progeny (Pillet et al., 2015), leads to enhanced expression of Leucoanthocyanidin Reductase (*LAR*) and Flavonone 3'-Hydroxylase (*F3'H*). This finding suggests that *FaTCP11* is critical in regulating the flavan-3-ols accumulation, thereby exerting a significant impact on strawberry quality. More recently the woodland strawberry *FvTCP9* gene was also shown to regulate positively anthocyanin accumulation using VIGS-induced RNAi silencing or gene overexpression (Xie et al., 2020). *FvTCP9* expression level is correlated with anthocyanin production, with the expression of phenolic-metabolism related genes and with that of other ripening-related genes involved in fruit softening or sugar accumulation.

Further sustaining the involvement of *TCPs* in the regulation of pigment accumulation in fleshy fruit species, the *MdTCP46* gene in apple (*Malus domestica*), has been reported to promote anthocyanin biosynthesis in response to high light exposure (An et al., 2020; You et al., 2023). Accordingly, overexpression of *MdTCP46* in fruit peel via infiltration effectively leads to a dramatic increase of anthocyanin production in fruit under high light. The same study demonstrated that *MdTCP46* interacts with *MdMYB1* and *MdBT2* to form a regulatory module

controlling anthocyanin accumulation under different light intensities. Interestingly, this regulatory module is also connected to hormone signaling cascades since *MdTCP46* was shown to interact with the ABA signaling effectors *MdABI5* or *MdRGL2a* DELLA protein while conversely, its expression is inhibited by GA treatment (Liu et al., 2022b; You et al., 2023).

## 2.3 TCP regulation at the crossroad of hormonal signaling

The complex process of fruit development, from the fertilized flower to the final ripening phase, is regulated by an intricate interplay between multiple plant hormones. At early stages of fruit growth, gibberellic acid (GA) and auxin have synergistic action in promoting cell division and expansion, thereby regulating fruit development and enlargement after fertilization (Serrani et al., 2008; He and Yamamuro, 2022). Later, the transition from immature stage to ripening stage is characterized by shifts in phytohormone profiles such as auxin, ethylene and abscisic acid (ABA) accompanied by transcriptional reprogramming (Forlani et al., 2019). Several studies suggest that the hormonal regulation of the expression of *TCP* genes is a frequent and widespread phenomenon in plants despite the fact that the physiological significance of these *TCPs* remains obscure to date.

In tomato, *SITCP12*, *SITCP15* and *SITCP18* genes that are expressed in fruit ripening display *Cis*-elements in their promoter regions shown to be typical binding sites of the RIN master regulator of fruit ripening as evidenced by yeast one-hybrid experiments (Parapunova et al., 2014). There are also reports supporting that ethylene acts as a direct or indirect regulator of *TCPs* expressed during fruit ripening. Indeed, co-expression studies demonstrated recently the existence of a strong correlation between the expression of *SITCP15* and the ethylene-responsive transcription factor 4 *SIERF4* while a second correlation was observed between *SITCP18* and Auxin-responsive Factor 5 (*SIARF5*), suggesting an interaction with multiple hormones signaling effectors (Edris et al., 2023).

In grape and blueberry, the expression patterns of *TCP* genes in fruits treated with different hormones also suggest a strong link between Class I *TCP* genes and hormone signaling. For instance, ABA treatment of grape berry at the veraison stage enhances *VvTCP14* and *VvTCP16* transcript levels while reducing that of *VvTCPs 6/7/15/17* (Jiu et al., 2019). On the other hand, in blueberry, expression of *VcTCP19/38/43/49/61* is sensitive to methyl-jasmonate treatment (Li et al., 2021).

## 3 Concluding remarks

The *TCP* family received less attention than many other transcription factor families like MADS, MYB, AP2-ERF, NAC with regard to their role in fruit biology. Yet, the increasing number of studies on different fruit species and the massive release of transcriptomic data produced by NGS technologies provided clues pointing to the putative involvement of Class I *TCP*



transcription factors as active regulators of fruit development and ripening. While the puzzle is far from complete, the expression data reviewed in this manuscript support the idea that *TCP* genes expressed at early stages of fruit development, including growth and differentiation, correspond to those already shown to be involved in several growth or differentiation processes in vegetative organs. The exact nature of the processes involving *TCP* in fruit growth remains to be elucidated. Nevertheless, based on the current model related to germination or internode elongation, it is tempting to speculate on a potential role of *TCP*s from different phylogenetic groups on cell division, expansion or endoreplication. Among the *TCP* genes expressed during fleshy fruit development several display preferential expression at the ripening phase. While these genes still await functional characterization, studies in strawberry and banana suggest that *TCP*s can impact various determinants of fruit quality such as pigment accumulation or modification of texture associated with ripening. In addition, various studies suggest a link between *TCP*s and hormone signaling, notably ethylene, ABA and auxin, three phytohormones known as key regulators in the frame of fruit biology. Addressing the functional characterization of *TCP* genes in fruit will be a key challenge in the future, as it may open new avenues for improving fruit quality, and provide novel targets for breeding strategies or biotechnical engineering.

## Author contributions

YG: Conceptualization, Writing – original draft, Writing – review & editing. FR: Conceptualization, Formal Analysis, Writing – review & editing. LZ: Conceptualization, Formal Analysis, Validation, Writing – review & editing. JP: Formal Analysis, Validation, Writing – review & editing. MB: Conceptualization, Formal Analysis, Validation, Writing – review & editing, Writing – original draft. BV: Conceptualization, Validation, Writing – original draft, Writing – review & editing.

## Funding

The author(s) declare that financial support was received for the research, authorship, and/or publication of this article. YG was supported by the Chinese Scholarship Council. The research was

## References

- Alem, A. L., Ariel, F. D., Cho, Y., Hong, J. C., Gonzalez, D. H., and Viola, I. L. (2022). *TCP15* interacts with *GOLDEN2-LIKE 1* to control cotyledon opening in *Arabidopsis*. *Plant J.* 110, 748–763. doi: 10.1111/tpj.15701
- Allan, A. C., and Epsley, R. V. (2018). MYBs drive novel consumer traits in fruits and vegetables. *Trends Plant Sci.* 23, 693–705. doi: 10.1016/j.tplants.2018.06.001
- An, J. P., Liu, Y. J., Zhang, X. W., Bi, S. Q., Wang, X. F., You, C. X., et al. (2020). Dynamic regulation of anthocyanin biosynthesis at different light intensities by the BT2-TCP46-MYB1 module in apple. *J. Exp. Bot.* 71, 3094–3109. doi: 10.1093/jxb/eraa056
- Azzi, L., Deluche, C., Gevaudant, F., Frangne, N., Delmas, F., Hernould, M., et al. (2015). Fruit growth-related genes in tomato. *J. Exp. Bot.* 66, 1075–1086. doi: 10.1093/jxb/eru527
- Bailey, T. L., and Elkan, C. (1994). Fitting a mixture model by expectation maximization to discover motifs in bipolymers. *UCSD Tech. Rep.* CS94–351.
- Barrett, T., Troup, D. B., Wilhite, S. E., Ledoux, P., Evangelista, C., Kim, I. F., et al. (2011). NCBI GEO: archive for functional genomics data sets–10 years on. *Nucleic Acids Res.* 39, D1005–D1010. doi: 10.1093/nar/gkq1184

supported by the European Union grants H2020 HARNESSTOM 101000716, the Labex TULIP ANR-10-LABX-41 and by OxyFruit ANR. Project also supported by graduate scientific research and innovation foundation of Chongqing, China (Grant No. CYS18064) and support from the Institut National Polytechnique de Toulouse.

## Conflict of interest

The authors declare that the research was conducted in the absence of any commercial or financial relationships that could be construed as a potential conflict of interest.

The author(s) declared that they were an editorial board member of *Frontiers*, at the time of submission. This had no impact on the peer review process and the final decision.

## Publisher's note

All claims expressed in this article are solely those of the authors and do not necessarily represent those of their affiliated organizations, or those of the publisher, the editors and the reviewers. Any product that may be evaluated in this article, or claim that may be made by its manufacturer, is not guaranteed or endorsed by the publisher.

## Supplementary material

The Supplementary Material for this article can be found online at: <https://www.frontiersin.org/articles/10.3389/fpls.2024.1411341/full#supplementary-material>

### SUPPLEMENTARY TABLE 1

Inventory, classification and preferential expression of Class I *TCP* genes in *Arabidopsis*, tomato, grape and maize. Class I *TCP* proteins were classified into four groups based on protein sequences from *Arabidopsis thaliana*, *Solanum lycopersicum*, *Vitis vinifera*, and *Zea mays*. Expression data for each protein group were extracted from the following databases: BAR-ePlant, TEA, and TomExpress for *Solanum lycopersicum*; BAR-ePlant for *Arabidopsis thaliana* and *Zea mays*; GEO DataSets for *Vitis vinifera*. Protein domains were predicted using the MEME software.

### SUPPLEMENTARY TABLE 2

Classification of *TCP* isoforms described in the literature (listed in ). The categorization was deduced from a phylogenetic analysis performed on the MEGAX software on amino acids sequence using the MUSCLE alignment and the Neighbor Joining algorithm.

- Barrett, T., Troup, D. B., Wilhite, S. E., Ledoux, P., Rudnev, D., Evangelista, C., et al. (2009). NCBI GEO: archive for high-throughput functional genomic data. *Nucleic Acids Res.* 37, D885–D890. doi: 10.1093/nar/gkn764
- Bresso, E. G., Chorostecki, U., Rodriguez, R. E., Palatnik, J. F., and Schommer, C. (2018). Spatial control of gene expression by miR319-regulated TCP transcription factors in leaf development. *Plant Physiol.* 176, 1694–1708. doi: 10.1104/pp.17.00823
- Camoirano, A., Arce, A. L., Ariel, F. D., Alem, A. L., Gonzalez, D. H., and Viola, I. L. (2020). Class I TCP transcription factors regulate trichome branching and cuticle development in Arabidopsis. *J. Exp. Bot.* 71, 5438–5453. doi: 10.1093/jxb/eraa257
- Chirinos, X., Ying, S., Rodrigues, M. A., Maza, E., Djari, A., Hu, G., et al. (2023). Transition to ripening in tomato requires hormone-controlled genetic reprogramming initiated in gel tissue. *Plant Physiol.* 191, 610–625. doi: 10.1093/plphys/kiac464
- Cubas, P., Lauter, N., Doebley, J., and Coen, E. (1999). The TCP domain: a motif found in proteins regulating plant growth and development. *Plant J.* 18, 215–222. doi: 10.1046/j.1365-313X.1999.00444.x
- D'Inca, E., Foresti, C., Orduña, L., Amato, A., Vandelle, E., Santiago, A., et al. (2023). The transcription factor VviNAC60 regulates senescence- and ripening-related processes in grapevine. *Plant Physiol.* 192, 1928–1946. doi: 10.1093/plphys/kiad050
- Danisman, S. (2016). TCP transcription factors at the interface between environmental challenges and the plant's growth responses. *Front. Plant Sci.* 7. doi: 10.3389/fpls.2016.01930
- Danisman, S., van der Wal, F., Dhondt, S., Waites, R., de Folter, S., Binbo, A., et al. (2012). Arabidopsis Class I and Class II TCP transcription factors regulate jasmonic acid metabolism and leaf development antagonistically. *Plant Physiol.* 159, 1511–1523. doi: 10.1104/pp.112.200303
- Dhaka, N., Bhardwaj, V., Sharma, M. K., and Sharma, R. (2017). Evolving tale of TCPs: new paradigms and old lacunae. *Front. Plant Sci.* 8. doi: 10.3389/fpls.2017.00479
- Ding, A. M., Xu, C. T., Xie, Q., Zhang, M. J., Yan, N., Dai, C. B., et al. (2022). ERF4 interacts with and antagonizes TCP15 in regulating endoreduplication and cell growth in Arabidopsis. *J. Integr. Plant Biol.* 64, 1673–1689. doi: 10.1111/jipb.13323
- Dong, Z., Hao, Y., Zhao, Y., Tang, W., Wang, X., Li, J., et al. (2024). Genome-wide analysis of the TCP transcription factor gene family in pepper (*Capsicum annuum* L.). *Plants-Basel* 13, 641. doi: 10.3390/plants13050641
- Edris, S., Abulfaraj, A. A., Makki, R. M., Abo-Aba, S., Algardaby, M. M., Sabir, J., et al. (2023). Early fruit development regulation-related genes concordantly expressed with TCP transcription factors in tomato (*Solanum lycopersicum*). *Curr. Issues Mol. Biol.* 45, 2372–2380. doi: 10.3390/cimb45030153
- Fernandez-Pozo, N., Zheng, Y., Snyder, S. I., Nicolas, P., Shinozaki, Y., Fei, Z., et al. (2017). The tomato expression atlas. *Bioinformatics* 33, 2397–2398. doi: 10.1093/bioinformatics/btx190
- Ferrero, L. V., Gastaldi, V., Ariel, F. D., Viola, I. L., and Gonzalez, D. H. (2021). Class I TCP proteins TCP14 and TCP15 are required for elongation and gene expression responses to auxin. *Plant Mol. Biol.* 105, 147–159. doi: 10.1007/s11103-020-01075-y
- Forlani, S., Masiero, S., and Mizzotti, C. (2019). Fruit ripening: the role of hormones, cell wall modifications, and their relationship with pathogens. *J. Exp. Bot.* 70, 2993–3006. doi: 10.1093/jxb/erz112
- Forlani, S., Mizzotti, C., and Masiero, S. (2021). The NAC side of the fruit: tuning of fruit development and maturation. *BMC Plant Biol.* 21, 238. doi: 10.1186/s12870-021-03029-y
- Gapper, N. E., McQuinn, R. P., and Giovannoni, J. J. (2013). Molecular and genetic regulation of fruit ripening. *Plant Mol. Biol.* 82, 575–591. doi: 10.1007/s11103-013-0050-3
- Gastaldi, V., Alem, A. L., Mansilla, N., Ariel, F. D., Viola, I. L., Lucero, L. E., et al. (2023). BREVIPEDICELLUS/KNAT1 targets TCP15 to modulate filament elongation during Arabidopsis late stamen development. *Plant Physiol.* 191, 29–34. doi: 10.1093/plphys/kiac502
- Gillaspy, G., Ben-David, H., and Gruissem, W. (1993). Fruits: a developmental perspective. *Plant Cell* 5, 1439–1451. doi: 10.2307/3869794
- Guo, Z.-H., Shu, W.-S., Cheng, H.-Y., Wang, G.-M., Qi, K.-J., Zhang, S.-L., et al. (2018). Expression analysis of TCP genes in peach reveals an involvement of PpTCP.A2 in ethylene biosynthesis during fruit ripening. *Plant Mol. Biol. Rep.* 36, 588–595. doi: 10.1007/s11105-018-1105-z
- Gupta, K., Wani, S. H., Razaq, A., Skalicky, M., Samantara, K., Gupta, S., et al. (2022). Abscisic acid: role in fruit development and ripening. *Front. Plant Sci.* 13. doi: 10.3389/fpls.2022.817500
- Hao, Y., Hu, G., Breitel, D., Liu, M., Mila, I., Frasse, P., et al. (2015). Auxin response factor SlARF2 is an essential component of the regulatory mechanism controlling fruit ripening in tomato. *PLoS Genet.* 11, e1005649. doi: 10.1371/journal.pgen.1005649
- He, H., and Yamamoto, C. (2022). Interplays between auxin and GA signaling coordinate early fruit development. *Hortic. Res.* 9, uhab078. doi: 10.1093/hr/uhab078
- Huang, B., Hu, G., Wang, K., Frasse, P., Maza, E., Djari, A., et al. (2021). Interaction of two MADS-box genes leads to growth phenotype divergence of all-flesh type of tomatoes. *Nat. Commun.* 12, 6892. doi: 10.1038/s41467-021-27117-7
- Jiang, Y., Shi, Z., Liu, W., Qi, M., Xu, T., Wu, Y., et al. (2023). Silencing SIPP2C expression delayed plant senescence and fruit ripening in tomato. *Physiol. Plant* 175, e13925. doi: 10.1111/ppl.13925
- Jiu, S., Xu, Y., Wang, J., Wang, L., Wang, S., Ma, C., et al. (2019). Genome-wide identification, characterization, and transcript analysis of the TCP transcription factors in *Vitis vinifera*. *Front. Genet.* 10. doi: 10.3389/fgenet.2019.01276
- Kieffer, M., Master, V., Waites, R., and Davies, B. (2011). TCP14 and TCP15 affect internode length and leaf shape in Arabidopsis. *Plant J.* 68, 147–158. doi: 10.1111/j.1365-313X.2011.04674.x
- Kou, X., Zhou, J., Wu, C. E., Yang, S., Liu, Y., Chai, L., et al. (2021). The interplay between ABA/ethylene and NAC TFs in tomato fruit ripening: a review. *Plant Mol. Biol.* 106, 223–238. doi: 10.1007/s11103-021-01128-w
- Lan, J., and Qin, G. (2020). The regulation of CIN-like TCP transcription factors. *Int. J. Mol. Sci.* 21, 4498. doi: 10.3390/ijms21124498
- Lan, J., Wang, N., Wang, Y., Jiang, Y., Yu, H., Cao, X., et al. (2023). Arabidopsis TCP4 transcription factor inhibits high temperature-induced homeotic conversion of ovules. *Nat. Commun.* 14, 5673. doi: 10.1038/s41467-023-41416-1
- Leng, X., Wei, H., Xu, X., Ghuge, S. A., Jia, D., Liu, G., et al. (2019). Genome-wide identification and transcript analysis of TCP transcription factors in grapevine. *BMC Genomics* 20, 786. doi: 10.1186/s12864-019-6159-2
- Li, Y., An, S., Cheng, Q., Zong, Y., Chen, W., Guo, W., et al. (2021). Analysis of evolution, expression and genetic transformation of TCP transcription factors in blueberry reveal that VcTCP18 negatively regulates the release of flower bud dormancy. *Front. Plant Sci.* 12. doi: 10.3389/fpls.2021.697609
- Li, Z. Y., Li, B., and Dong, A. W. (2012). The Arabidopsis transcription factor AtTCP15 regulates endoreduplication by modulating expression of key cell-cycle genes. *Mol. Plant* 5, 270–280. doi: 10.1093/mp/ssr086
- Li, D., Li, H., Feng, H., Qi, P., and Wu, Z. (2024). Unveiling kiwifruit TCP genes: evolution, functions, and expression insights. *Plant Signal Behav.* 19, 2338985. doi: 10.1080/15592324.2024.2338985
- Li, W., Li, D. D., Han, L. H., Tao, M., Hu, Q. Q., Wu, W. Y., et al. (2017). Genome-wide identification and characterization of TCP transcription factor genes in upland cotton (*Gossypium hirsutum*). *Sci. Rep.* 7, 10118. doi: 10.1038/s41598-017-10609-2
- Li, D., Tang, X., Dong, Y., Wang, Y., Shi, S., Li, S., et al. (2022). Comparative genomic investigation of TCP gene family in eggplant (*Solanum melongena* L.) and expression analysis under divergent treatments. *Plant Cell Rep.* 41, 2213–2228. doi: 10.1007/s00299-022-02918-2
- Ling, Q., Sadali, N. M., Soufi, Z., Zhou, Y., Huang, B., Zeng, Y., et al. (2021). The chloroplast-associated protein degradation pathway controls chromoplast development and fruit ripening in tomato. *Nat. Plants* 7, 655–666. doi: 10.1038/s41477-021-00916-y
- Liu, Y. J., An, J. P., Gao, N., Wang, X., Chen, X. X., Wang, X. F., et al. (2022b). MdTCP46 interacts with MdABI5 to negatively regulate ABA signalling and drought response in apple. *Plant Cell Environ.* 45, 3233–3248. doi: 10.1111/pce.14429
- Liu, M., Li, Z., Zhang, Y., and Gao, J. (2020). Role of ethylene response factors (ERFs) in fruit ripening. *Food Qual Saf-Oxford* 4, 15–20. doi: 10.1093/fqsaf/fyz042
- Liu, D.-H., Luo, Y., Han, H., Liu, Y.-Z., Alam, S. M., Zhao, H.-X., et al. (2022a). Genome-wide analysis of citrus TCP transcription factors and their responses to abiotic stresses. *BMC Plant Biol.* 22, 325. doi: 10.1186/s12870-022-03709-3
- Ma, X., Balazadeh, S., and Mueller-Roeber, B. (2019). Tomato fruit ripening factor NOR controls leaf senescence. *J. Exp. Bot.* 70, 2727–2740. doi: 10.1093/jxb/erz098
- Ma, X., Zhang, Y., Tureckova, V., Xue, G. P., Fernie, A. R., Mueller-Roeber, B., et al. (2018). The NAC transcription factor SINAP2 regulates leaf senescence and fruit yield in tomato. *Plant Physiol.* 177, 1286–1302. doi: 10.1104/pp.18.00292
- Nicolas, M., and Cubas, P. (2016). TCP factors: new kids on the signaling block. *Curr. Opin. Plant Biol.* 33, 33–41. doi: 10.1016/j.pbi.2016.05.006
- Parapunova, V., Busscher, M., Busscher-Lange, J., Lammers, M., Karlova, R., Bovy, A. G., et al. (2014). Identification, cloning and characterization of the tomato TCP transcription factor family. *BMC Plant Biol.* 14, 157. doi: 10.1186/1471-2229-14-157
- Peng, Y., Chen, L., Lu, Y., Wu, Y., Dumenil, J., Zhu, Z., et al. (2015). The ubiquitin receptors DA1, DAR1, and DAR2 redundantly regulate endoreduplication by modulating the stability of TCP14/15 in Arabidopsis. *Plant Cell* 27, 649–662. doi: 10.1105/tpc.114.132274
- Picton, S., Barton, S. L., Bouzayen, M., Hamilton, A. J., and Grierson, D. (2011). Altered fruit ripening and leaf senescence in tomatoes expressing an antisense ethylene-forming enzyme transgene. *Plant J.* 3, 469–481. doi: 10.1111/j.1365-313X.1993.tb00167.x
- Pillet, J., Yu, H. W., Chambers, A. H., Whitaker, V. M., and Folta, K. M. (2015). Identification of candidate flavonoid pathway genes using transcriptome correlation network analysis in ripe strawberry (*Fragaria x ananassa*) fruits. *J. Exp. Bot.* 66, 4455–4467. doi: 10.1093/jxb/erv205
- Rath, M., Challa, K. R., Sarvepalli, K., and Nath, U. (2022). CINCINNATA-like TCP transcription factors in cell growth - an expanding portfolio. *Front. Plant Sci.* 13. doi: 10.3389/fpls.2022.825341
- Ren, J., Yang, L., Cao, R., Wang, Y., Zhang, C., Yu, X., et al. (2023). Integrated metabolome and transcriptome analysis provides new insights into the glossy graft cucumber fruit (*Cucumis sativus* L.). *Int. J. Mol. Sci.* 24, 12147. doi: 10.3390/ijms241512147
- Resentini, F., Felipo-Benavent, A., Colombo, L., Blazquez, M. A., Alabadi, D., and Masiero, S. (2015). TCP14 and TCP15 mediate the promotion of seed germination by gibberellins in Arabidopsis thaliana. *Mol. Plant* 8, 482–485. doi: 10.1016/j.molp.2014.11.018

- Rizwan, H. M., Shaozhong, F., Li, X., Bilal Arshad, M., Yousef, A. F., Chenglong, Y., et al. (2022). Genome-wide identification and expression profiling of KCS gene family in passion fruit (*Passiflora edulis*) under fusarium kyushuense and drought stress conditions. *Front. Plant Sci.* 13. doi: 10.3389/fpls.2022.872263
- Sarvepalli, K., and Nath, U. (2018). CIN-TCP transcription factors: transiting cell proliferation in plants. *IUBMB Life* 70, 718–731. doi: 10.1002/iub.1874
- Serrani, J. C., Ruiz-Rivero, O., Fos, M., and Garcia-Martinez, J. L. (2008). Auxin-induced fruit-set in tomato is mediated in part by gibberellins. *Plant J.* 56, 922–934. doi: 10.1111/j.1365-3113X.2008.03654.x
- Seymour, G. B., Ostergaard, L., Chapman, N. H., Knapp, S., and Martin, C. (2013). Fruit development and ripening. *Annu. Rev. Plant Biol.* 64, 219–241. doi: 10.1146/annurev-arplant-050312-120057
- Sharma, K., Gupta, S., Sarma, S., Rai, M., Sreelakshmi, Y., and Sharma, R. (2021). Mutations in tomato 1-aminocyclopropane carboxylic acid synthase2 uncover its role in development beside fruit ripening. *Plant J.* 106, 95–112. doi: 10.1111/tpj.15148
- Shinozaki, Y., Nicolas, P., Fernandez-Pozo, N., Ma, Q., Evanich, D. J., Shi, Y., et al. (2018). High-resolution spatiotemporal transcriptome mapping of tomato fruit development and ripening. *Nat. Commun.* 9, 364. doi: 10.1038/s41467-017-02782-9
- Song, C. B., Shan, W., Yang, Y. Y., Tan, X. L., Fan, Z. Q., Chen, J. Y., et al. (2018). Heterodimerization of MaTCP proteins modulates the transcription of *MaXTH10/11* genes during banana fruit ripening. *Biochim. Biophys. Acta Gene Regul. Mech.* 1861, 613–622. doi: 10.1016/j.bbagr.2018.06.005
- Sun, L., Zou, X., Jiang, M., Wu, X., Chen, Y., Wang, Q., et al. (2020). The crystal structure of the TCP domain of PCF6 in *Oryza sativa* L. reveals an RHH-like fold. *FEBS Lett.* 594, 1296–1306. doi: 10.1002/1873-3468.13727
- Tabarelli, M., Malnoy, M., and Janik, K. (2022). Chasing consistency: an update of the TCP gene family of *Malus x Domestica*. *Genes-Basel* 13, 1696. doi: 10.3390/genes13101696
- Tourdot, E., Mauxion, J. P., Gonzalez, N., and Chevalier, C. (2023). Endoreduplication in plant organogenesis: a means to boost fruit growth. *J. Exp. Bot.* 74, 6269–6284. doi: 10.1093/jxb/erad235
- Uberti-Manassero, N. G., Lucero, L. E., Viola, I. L., Vegetti, A. C., and Gonzalez, D. H. (2012). The class I protein ATTCP15 modulates plant development through a pathway that overlaps with the one affected by CIN-like TCP proteins. *J. Exp. Bot.* 63, 809–823. doi: 10.1093/jxb/err305
- Viola, I. L., Alem, A. L., Jure, R. M., and Gonzalez, D. H. (2023). Physiological roles and mechanisms of action of Class I TCP transcription factors. *Int. J. Mol. Sci.* 24, 5437. doi: 10.3390/ijms24065437
- Viola, I. L., Camoirano, A., and Gonzalez, D. H. (2016). Redox-dependent modulation of anthocyanin biosynthesis by the TCP transcription factor TCP15 during exposure to high light intensity conditions in *Arabidopsis*. *Plant Physiol.* 170, 74–85. doi: 10.1104/pp.15.01016
- Viola, I. L., and Gonzalez, D. H. (2023). TCP transcription factors in plant reproductive development: juggling multiple roles. *Biomolecules* 13, 750. doi: 10.3390/biom13050750
- Vrebalov, J., Pan, I. L., Arroyo, A. J., McQuinn, R., Chung, M., Poole, M., et al. (2009). Fleshy fruit expansion and ripening are regulated by the Tomato *SHATTERPROOF* gene *TAGL1*. *Plant Cell* 21, 3041–3062. doi: 10.1105/tpc.109.066936
- Vrebalov, J., Ruzinsky, D., Padmanabhan, V., White, R., Medrano, D., Drake, R., et al. (2002). A MADS-box gene necessary for fruit ripening at the tomato ripening-inhibitor (*rin*) locus. *Science* 296, 343–346. doi: 10.1126/science.1068181
- Waese, J., Fan, J., Pasha, A., Yu, H., Fucile, G., Shi, R., et al. (2017). ePlant: visualizing and exploring multiple levels of data for hypothesis generation in plant biology. *Plant Cell* 29, 1806–1821. doi: 10.1105/tpc.17.00073
- Wang, N., Guo, T., Wang, P., Sun, X., Shao, Y., Liang, B., et al. (2017). Functional analysis of apple *MhYTP1* and *MhYTP2* genes in leaf senescence and fruit ripening. *Sci. Hort. Amsterdam* 221, 23–32. doi: 10.1016/j.scienta.2017.04.018
- Wang, J., Wang, Z., Jia, C., Miao, H., Zhang, J., Liu, J., et al. (2022a). Genome-wide identification and transcript analysis of TCP gene family in banana (*Musa acuminata* L.). *Biochem. Genet.* 60, 204–222. doi: 10.1007/s10528-021-10100-8
- Wang, Y., Wang, N., Lan, J., Pan, Y., Jiang, Y., Wu, Y., et al. (2024). Arabidopsis transcription factor TCP4 controls the identity of the apical gynoecium. *Plant Cell*, koae107. doi: 10.1093/plcell/koae107
- Wang, K., Zhang, N., Fu, X., Zhang, H., Liu, S., Pu, X., et al. (2022b). *StTCP15* regulates potato tuber sprouting by modulating the dynamic balance between abscisic acid and gibberellic acid. *Front. Plant Sci.* 13, 1009552. doi: 10.3389/fpls.2022.1009552
- Wang, M. Y., Zhao, P. M., Cheng, H. Q., Han, L. B., Wu, X. M., Gao, P., et al. (2013). The cotton transcription factor TCP14 functions in auxin-mediated epidermal cell differentiation and elongation. *Plant Physiol.* 162, 1669–1680. doi: 10.1104/pp.113.215673
- Wei, W., Hu, Y., Cui, M. Y., Han, Y. T., Gao, K., and Feng, J. Y. (2016). Identification and transcript analysis of the TCP transcription factors in the diploid woodland strawberry *Fragaria vesca*. *Front. Plant Sci.* 7. doi: 10.3389/fpls.2016.01937
- Wen, H., Chen, Y., Du, H., Zhang, L., Zhang, K., He, H., et al. (2020). Genome-wide identification and characterization of the TCP gene family in cucumber (*Cucumis sativus* L.) and their transcriptional responses to different treatments. *Genes-Basel* 11, 1379. doi: 10.3390/genes11111379
- Xiao, X. M., Xu, Y. M., Zeng, Z. X., Tan, X. L., Liu, Z. L., Chen, J. W., et al. (2019). Activation of the transcription of *BrGA20ox3* by a BrTCP21 transcription factor is associated with gibberellin-delayed leaf senescence in Chinese flowering cabbage during storage. *Int. J. Mol. Sci.* 20, 3860. doi: 10.3390/ijms20163860
- Xie, Y. G., Ma, Y. Y., Bi, P. P., Wei, W., Liu, J., Hu, Y., et al. (2020). Transcription factor *FvTCP9* promotes strawberry fruit ripening by regulating the biosynthesis of abscisic acid and anthocyanins. *Plant Physiol. Biochem.* 146, 374–383. doi: 10.1016/j.plaphy.2019.11.004
- Xu, R., Chong, L., and Zhu, Y. (2024). Mediator kinase subunit CDK8 phosphorylates transcription factor TCP15 during tomato pollen development. *Plant Physiol.* 195, 865–878. doi: 10.1093/plphys/kiad079
- Xu, R., Sun, P., Jia, F., Lu, L., Li, Y., Zhang, S., et al. (2014). Genomewide analysis of TCP transcription factor gene family in *Malus domestica*. *J. Genet.* 93, 733–746. doi: 10.1007/s12041-014-0446-0
- Xu, Y. M., Xiao, X. M., Zeng, Z. X., Tan, X. L., Liu, Z. L., Chen, J. W., et al. (2019). BrTCP7 transcription factor is associated with MeJA-promoted leaf senescence by activating the expression of *BrOPR3* and *BrRCCR*. *Int. J. Mol. Sci.* 20, 3963. doi: 10.3390/ijms20163963
- Ye, Y., Zhou, L., Liu, X., Liu, H., Li, D., Cao, M., et al. (2017). A novel chemical inhibitor of ABA signaling targets all ABA receptors. *Plant Physiol.* 173, 2356–2369. doi: 10.1104/pp.16.01862
- You, C., Han, Y., and An, J. (2023). The RGL2a-TCP46-MYB1 module regulates GA-mediated anthocyanin biosynthesis in apple. *Fruit Res.* 3, 21. doi: 10.48130/FruRes-2023-0021
- Zhang, Y., Li, Z., Tu, Y., Cheng, W., and Yang, Y. (2018). Tomato (*Solanum lycopersicum*) *SLIPT4*, encoding an isopentenyltransferase, is involved in leaf senescence and lycopene biosynthesis during fruit ripening. *BMC Plant Biol.* 18, 107. doi: 10.1186/s12870-018-1327-0
- Zhang, T., Qu, Y., Wang, H., Wang, J., Song, A., Hu, Y., et al. (2017). The heterologous expression of a chrysanthemum TCP-P transcription factor CmTCP14 suppresses organ size and delays senescence in *Arabidopsis thaliana*. *Plant Physiol. Biochem.* 115, 239–248. doi: 10.1016/j.plaphy.2017.03.026
- Zhang, J., Wang, Y., Naeem, M., Zhu, M., Li, J., Yu, X., et al. (2019b). An AGAMOUS MADS-box protein, SIMBP3, regulates the speed of placenta liquefaction and controls seed formation in tomato. *J. Exp. Bot.* 70, 909–924. doi: 10.1093/jxb/ery418
- Zhang, Y., Xu, Y. P., Nie, J. K., Chen, H., Qin, G., Wang, B., et al. (2023). DNA-TCP complex structures reveal a unique recognition mechanism for TCP transcription factor families. *Nucleic Acids Res.* 51, 434–448. doi: 10.1093/nar/gkac1171
- Zhang, G., Zhao, H., Zhang, C., Li, X., Lyu, Y., Qi, D., et al. (2019a). TCP7 functions redundantly with several Class I TCPs and regulates endoreduplication in *Arabidopsis*. *J. Integr. Plant Biol.* 61, 1151–1170. doi: 10.1111/jipb.12749
- Zhao, Y., Su, X., Wang, X., Wang, M., Chi, X., Aamir Manzoor, M., et al. (2021). Comparative genomic analysis of TCP genes in six rosaceae species and expression pattern analysis in *Pyrus bretschneideri*. *Front. Genet.* 12. doi: 10.3389/fgenet.2021.669959
- Zhao, J., Zhai, Z., Li, Y., Geng, S., Song, G., Guan, J., et al. (2018). Genome-wide identification and expression profiling of the TCP family genes in spike and grain development of wheat (*Triticum aestivum* L.). *Front. Plant Sci.* 9. doi: 10.3389/fpls.2018.01282
- Zhou, H., Hwarari, D., Ma, H., Xu, H., Yang, L., and Luo, Y. (2022). Genomic survey of TCP transcription factors in plants: phylogenomics, evolution and their biology. *Front. Genet.* 13. doi: 10.3389/fgene.2022.1060546
- Zhou, Y., Xu, Z., Zhao, K., Yang, W., Cheng, T., Wang, J., et al. (2016). Genome-wide identification, characterization and expression analysis of the TCP gene family in *Prunus mume*. *Front. Plant Sci.* 7. doi: 10.3389/fpls.2016.01301
- Zou, X., and Sun, H. (2023). DOF transcription factors: specific regulators of plant biological processes. *Front. Plant Sci.* 14. doi: 10.3389/fpls.2023.1044918
- Zouine, M., Maza, E., Djari, A., Lauvernier, M., Frasse, P., Smouni, A., et al. (2017). TomExpress, a unified tomato RNA-Seq platform for visualization of expression data, clustering and correlation networks. *Plant J.* 92, 727–735. doi: 10.1111/tpj.13711