



**HAL**  
open science

## Impact of initial air and subsequent H<sub>2</sub> gas migration in a radioactive waste repository

Mohamed Haythem Bahlouli, Zakaria Saadi, Rachid Ababou

► **To cite this version:**

Mohamed Haythem Bahlouli, Zakaria Saadi, Rachid Ababou. Impact of initial air and subsequent H<sub>2</sub> gas migration in a radioactive waste repository. 16èmes Journées d'Étude sur les Milieux Poreux (JEMP 2023), IFPEN, Oct 2023, Rueil-Malmaison, France. hal-04483226

**HAL Id: hal-04483226**

**<https://ut3-toulouseinp.hal.science/hal-04483226v1>**

Submitted on 29 Feb 2024

**HAL** is a multi-disciplinary open access archive for the deposit and dissemination of scientific research documents, whether they are published or not. The documents may come from teaching and research institutions in France or abroad, or from public or private research centers.

L'archive ouverte pluridisciplinaire **HAL**, est destinée au dépôt et à la diffusion de documents scientifiques de niveau recherche, publiés ou non, émanant des établissements d'enseignement et de recherche français ou étrangers, des laboratoires publics ou privés.

# Impact of initial air and subsequent H<sub>2</sub> gas migration in a radioactive waste repository

M. H. Bahlouli (a,b), Z. Saadi (a), R. Ababou (b)

<sup>a</sup>IRSN, 31 avenue de la Division Leclerc - 92260 Fontenay-aux-Roses

<sup>b</sup>Institut de Mécanique des Fluides de Toulouse, 2 Allée du Professeur C. Soula, 31400 Toulouse

---

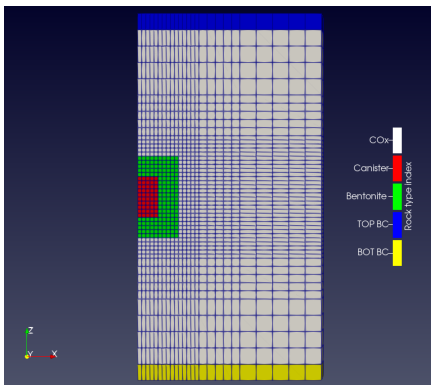
**Keywords:** Radioactive waste, Two-phase flow, Multi-component transport, TOUGH code

---

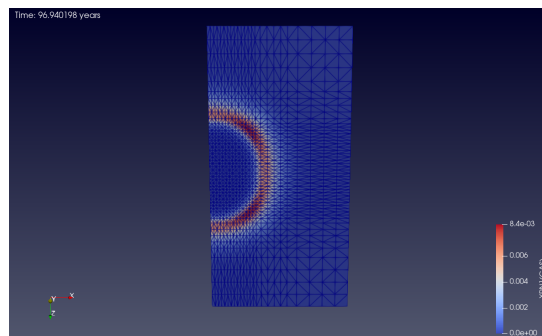
In a geological repository for high-level radioactive waste, corrosion of steel and water radiolysis leads to generation and accumulation of hydrogen gas which may significantly affect long-term safety of the repository. Numerical modeling can be used to predict the hydraulic and hydromechanical evolution of such a disposal facility and to estimate the influence of excavation and generated gas on host clay rock and sealings. While several modelling teams have studied gas migration [1], very few have considered the initial presence of air and its impact on later hydrogen migration. Note that, during excavation, the CO<sub>2</sub> around the tunnels is disturbed, which creates an Excavation Disturbed Zone (EDZ), both hydraulically (rock desaturation) and mechanically (fracturing, redistribution of stresses, natural convergence).

In our study, we have compared results obtained from TOUGH [2] modules (Equations Of States): EOS5 for modeling two-phase flow with only water and hydrogen, and EOS7R for modeling a more complex multi-component two-phase system with water, brine, air, and two radionuclides able to volatilize and dissolve. This EOS7R model is tuned to attribute non-radioactive hydrogen gas properties to the 1st radionuclide (brine and the 2nd radionuclide are turned off). The van Genuchten (1980) relative permeability and capillary pressure functions are used.

The model is then run at the scale of a waste cell: Figure 1a. One challenge is to estimate the peak gas pressure around the cell and check whether it exceeds lithostatic pressure at depth 630m. If that is achieved, the mechanical stability of the engineered system and natural barriers may be affected. The results indicate that hydrogen gas plume migration is impeded by the bentonite seal around the canister. However, the migration of dissolved H<sub>2</sub> away from the container is less impeded, as indicated by Figure 1b. In future, this model will be extended to take into account hydromechanical coupling.



(a) Preliminary axi-symmetric model of CIGEO waste cell: Finite Volumes mesh



(b) EOS7R TOUGH2 simulation: H<sub>2</sub> Mass Fraction XH<sub>2</sub>GAS in the Gas mixture ( $t = 97$  years)

## References

- [1] Talandier, Jean. *Couplex-Gaz Benchmark: Synthesis of results for case 1*. (Workshop Couplex-Gaz, 4 avril 2007).
- [2] Pruess, Karsten, Curtis M. Oldenburg, and G. J. Moridis. *TOUGH2 user's guide version 2. No. LBNL-43134*. Lawrence Berkeley National Lab.(LBNL), Berkeley, CA (United States), 1999.