



## Association between IL23R and ERAP1 polymorphisms and sacroiliac or spinal MRI inflammation in spondyloarthritis

Adeline Ruyssen-Witrand, Cécile Luxembourger, Alain Cantagrel, Delphine Nigon, Pascal Claudepierre, Yannick Degboe, Arnaud Constantin

### ► To cite this version:

Adeline Ruyssen-Witrand, Cécile Luxembourger, Alain Cantagrel, Delphine Nigon, Pascal Claudepierre, et al.. Association between IL23R and ERAP1 polymorphisms and sacroiliac or spinal MRI inflammation in spondyloarthritis: DESIR cohort data. *Arthritis Research & Therapy*, 2019, 21 (1), pp.22. 10.1186/s13075-018-1807-5 . hal-03604260

**HAL Id: hal-03604260**

**<https://ut3-toulouseinp.hal.science/hal-03604260>**

Submitted on 10 Mar 2022

**HAL** is a multi-disciplinary open access archive for the deposit and dissemination of scientific research documents, whether they are published or not. The documents may come from teaching and research institutions in France or abroad, or from public or private research centers.


L'archive ouverte pluridisciplinaire **HAL**, est destinée au dépôt et à la diffusion de documents scientifiques de niveau recherche, publiés ou non, émanant des établissements d'enseignement et de recherche français ou étrangers, des laboratoires publics ou privés.

RESEARCH ARTICLE

Open Access



# Association between *IL23R* and *ERAP1* polymorphisms and sacroiliac or spinal MRI inflammation in spondyloarthritis: DESIR cohort data

Adeline Ruyssen-Witrand<sup>1\*</sup> , Cécile Luxembourger<sup>1</sup>, Alain Cantagrel<sup>2</sup>, Delphine Nigon<sup>3</sup>, Pascal Claudepierre<sup>4</sup>, Yannick Degboe<sup>2</sup> and Arnaud Constantin<sup>2</sup>

## Abstract

**Background:** To investigate the association between 12 single nucleotide polymorphisms (SNPs) located on *ERAP1* and *IL23R* with the presence of inflammation on the sacroiliac joint (SIJ) or spinal magnetic resonance imagery (MRI) in an early onset spondyloarthritis (SpA) cohort.

**Methods:** All the patients included in the DESIR cohort with an axial SpA and available DNA at baseline were enrolled in this study ( $n = 645$  patients) and underwent a clinical examination, CRP assay, SIJ and spinal MRI scans. Six SNPs located on *ERAP1* (*rs30187*, *rs27044*, *rs27434*, *rs17482078*, *rs10050860*, *rs2287987*) and six SNPs located on *IL23R* (*rs1004819*, *rs10489629*, *rs1343151*, *rs2201841*, *rs10889677*, *rs11209032*) were genotyped. Univariable analyses were performed to test the association between the genotypes and SIJ and spinal MRI inflammation, as well as disease activity based on Bath Ankylosing Spondylitis Disease Activity Index (BASDAI), Ankylosing Spondylitis Disease Activity Score-C-Reactive Protein (ASDAS-CRP) and CRP.

**Results:** One SNP located on *ERAP1* (*rs27434*) and haplotype CCT of *ERAP1* were associated with SIJ inflammation detected by MRI, but these associations were below the Bonferroni corrected threshold of significance. However, one SNP (*rs1004819*) located on *IL23R* was associated with SIJ MRI inflammation (*rs1004819*: TT 42.3%, CT 40.5%, CC 26.5%,  $p = 0.0005$ ). This locus was also significantly associated with Spondyloarthritis Research Consortium of Canada scores while no association with another inflammatory parameter such as BASDAI, ASDAS-CRP, CRP or Berlin MRI score was identified in this population.

**Conclusion:** One locus of the *IL23R* gene was associated with SIJ MRI inflammation and might be a marker of more active disease in recent onset SpA.

**Trial registration:** clinicaltrials.gov, NCT01648907

**Keywords:** Spondyloarthritis, Sacroiliitis, Polymorphisms

\* Correspondence: [ruyssen-witrand.a@chu-toulouse.fr](mailto:ruyssen-witrand.a@chu-toulouse.fr)

<sup>1</sup>Centre de rhumatologie, CHU de Toulouse, UMR 1027, Inserm, Université Paul Sabatier Toulouse III, Toulouse, France

Full list of author information is available at the end of the article



© The Author(s). 2019 **Open Access** This article is distributed under the terms of the Creative Commons Attribution 4.0 International License (<http://creativecommons.org/licenses/by/4.0/>), which permits unrestricted use, distribution, and reproduction in any medium, provided you give appropriate credit to the original author(s) and the source, provide a link to the Creative Commons license, and indicate if changes were made. The Creative Commons Public Domain Dedication waiver (<http://creativecommons.org/publicdomain/zero/1.0/>) applies to the data made available in this article, unless otherwise stated.

## Background

Spondyloarthritis (SpA) is a common, highly heritable form of inflammatory arthritis that primarily affects the spine and pelvis. The first genetic determinant of this disease is the presence of *HLA-B27* susceptibility alleles for which 114 subtypes are now recognised [1].

The presence of *HLA-B27* is the major genetic factor implicated in disease susceptibility. Nevertheless, other genes are also involved in the genetic background for SpA since *HLA-B27* is detected in around 90% of patients with ankylosing spondylitis (AS) and in 30–50% of cases involving other SpA subtypes such as psoriatic arthritis (PsA) or SpA associated with inflammatory bowel disease [2].

Several genome-wide association (GWA) studies have been published on AS susceptibility in individuals from European and Asian populations, which have identified at least 31 significant non-HLA genetic loci. These genes account for up to 25% of the overall heritability of AS, with the overwhelming majority provided by *HLA-B27* per se [2, 3]. Among these recently identified loci, variations within genes encoding proteins involved in interferon or tumour necrosis factor/NFκB signalling and transcription have been identified, as well as genes influencing IL-23/IL-17 signalling or TCD8+ differentiation or genes encoding proteins crucial for antigen presentation [3].

Among these novel loci, *ERAP1* variants have been widely replicated by GWA studies in populations of white European ancestry and in Eastern Asians [4, 5]. *ERAP1* variants alter the quantity, length and stability of peptides presented to the peptide-MHC molecule [6]. Furthermore, several variants located on *IL23R* have also been shown to be associated with SpA susceptibility in several studies [3, 7, 8].

Although these associations have often been replicated in several different populations, the association of these polymorphisms with the disease phenotype and especially disease activity assessed by magnetic resonance imaging (MRI) inflammation has been poorly investigated.

The aim of this study was to investigate the association between 12 SNPs located on *ERAP1* and *IL23R* genes and sacroiliac joint (SIJ) or spinal MRI inflammation in a cohort of newly diagnosed SpA patients (DESIR cohort).

## Patients and methods

### Study population

The DEvenir des Spondyloarthrites Indifférenciées Récentes (DESIR) cohort has already been described in the literature [9]. In short, DESIR is a French, long-term prospective longitudinal cohort study monitoring 708 patients (between 18 and 50 years of age) presenting inflammatory back pain (IBP) suggestive of axial SpA for  $\geq 3$  months and  $< 3$  years, according to their rheumatologist, included in 25 centres across France between 2007 and 2010. All patients included

in the study underwent a baseline collection of clinical data, blood samples, unenhanced pelvic and spinal X-rays, SIJ and spinal MRI. Among these patients, 645 with DNA specimens and fulfilling at least 1 spondyloarthritis classification criteria including axial Assessment of Spondyloarthritis international Society (ASAS) criteria 2009 [10], Amor criteria [11], ESSG criteria [12] or modified New York criteria [13] were selected for the present study. The baseline database of the DESIR cohort was used for this study (dataset locked on June 30, 2010).

### Ethics, consent and permission

The study complied with Good Clinical Practice Guidelines (clinicaltrials.gov: NCT01648907, <https://clinicaltrials.gov/ct2/show/NCT01648907>) and was approved by the appropriate Medical Ethics Committee (CPP Ile-de-France III, submission number P070302). Patients gave their informed consent before the study started, including their permission for any anonymously processed data to be published.

### Genetic polymorphisms

Genotyping of the *IL23R* (*rs1004819*, *rs10489629*, *rs1343151*, *rs2201841*, *rs10889677*, *rs11209032*) and *ERAP1* (*rs30187*, *rs27044*, *rs27434*, *rs17482078*, *rs10050860*, *rs2287987*) polymorphisms was performed by LGC Genomics Platform (UK) using allele-specific kinetic polymerase chain reaction analysis and the KASPar method (accuracy generally  $> 99\%$ , error rate  $< 0.3\%$ ). These 12 SNPs were selected because they were associated with SpA susceptibility [3–8] or located close to a SNP associated with SpA susceptibility with an allele frequency  $> 0.1$  in the Caucasian population.

### Imaging data

An MRI scan of the SIJ and spine was performed at the outset in each participating centre using 1.0–1.5 T machines.

### MRI sacroiliitis definition as primary outcome

The acquired sequences were coronal oblique T1-weighted FSE and STIR images with 12–15 semi-coronal slices, each 4-mm-thick, parallel to the long axis of the sacrum. All available baseline SIJ MRIs were read centrally and independently by 2 readers, blinded for all clinical and laboratory data. SIJ MRI scans were considered positive according to the ASAS definition [14] if bone marrow oedema lesions, highly indicative of SpA, were present (i.e. if  $\geq 1$  bone marrow oedema lesions were visible on  $\geq 2$  consecutive slices, or if several bone marrow oedema lesions were visible on a single slice). Inter-reader agreement for the definition of MRI-detected sacroiliitis was good (kappa score of approximately 0.74) [15]. When central readers disagreed on the presence of inflammation on the spine or SI MRI, a senior radiologist involved the MRI and served as adjudicator blinded to the information of the primary readers.

### Other secondary imaging outcomes

The two readers also scored the MRI scans (intra-class correlation coefficient of around 0.94 for absolute baseline scores) for the presence of inflammatory lesions according to the Spondyloarthritis Research Consortium of Canada (SPARCC) scoring method (range 0–72) [16].

MRI scans of the thoracic spine and lumbar spine were performed using the T1-weighted spin-echo and short-tau inversion recovery sequences. Inflammatory lesions were centrally scored by two independent readers, blinded to the clinical data. A positive spinal MRI was defined according to the ASAS consensus (i.e.  $\geq 3$  inflammatory lesions) [17] and using the Berlin method [18]. Agreement between readers for an ASAS-defined positive spinal MRI was moderate ( $k = 0.58$ ) [19].

All MRI scans were centrally scored by two trained readers and expressed in positive MRI sacroiliitis according to the ASAS definition or not, size of bone marrow oedema according to the Spondyloarthritis Research Consortium of Canada (SPARCC) scoring method (range 0–72) and positive spinal MRI according to the ASAS consensus definition and MRI spine inflammation using the Berlin method.

Sacroiliitis on X-rays was centrally assessed according to the modified New York criteria [13] by two different, blinded, trained readers (moderate inter-reader agreement with a kappa score of around 0.54) [20].

### Other clinical and biological data

For the present study, demographic characteristics including age, sex, disease duration and disease activity data were analysed at the outset. The markers of disease activity included the Bath Ankylosing Spondylitis Disease Activity Index (BASDAI) and the Ankylosing Spondylitis Disease Activity Score-C-Reactive Protein (ASDAS-CRP) and were studied as potential cofounders for the primary analysis.

C-reactive protein (CRP) and *HLA-B27* status were measured at baseline and studied as potential cofounders for the primary analysis.

### Statistical analysis

Tests for deviation from the Hardy-Weinberg equilibrium (HWE) were performed using a standard  $\chi^2$  test (1 d.f.). A linkage disequilibrium was investigated within SNPs located on the same gene using PLINK v1.07 software, and in the case of a strong linkage disequilibrium (defined by a  $r^2 > 0.8$  and  $D' = 1$ ), a haplotype of the SNPs in linkage disequilibrium was created for analytic purposes with Haploview software.

The primary outcome was to investigate the association between the SNPs and haplotypes of SNPs and SIJ MRI inflammation using a Fisher test or chi-square test and the Cochrane-Armitage test for trends. A Bonferroni

correction was applied to the result of the Cochrane-Armitage trend test for this analysis taking multiple tests into account. In case of association, epistatic interactions between the locus and *HLA-B27* were investigated using two different methods: the RERI method and PLINK epistasis software v1.07 [21]. In the event of an interaction, the results were stratified on *HLA-B27* carriage.

If a significant association was detected, other associations between the SNPs and/or haplotypes and activity assessed by BASDAI, ASDAS-CRP, CRP, MRI oedema size assessed by using the SPARCC score or structural damage radiographic sacroiliitis (New York criteria) were further assessed, using a Fisher test or chi-square test and the Cochrane-Armitage test for trends in the case of qualitative variables or Kruskal-Wallis and Cuzick trend tests for quantitative variables. Considering all the multiple tests performed, the threshold of significance after Bonferroni correction was set at approximately 0.0033. Assuming that a meaningful difference of 15% in the prevalence of MRI sacroiliitis between allele carriers and non-carriers, and knowing that 34% of the DESIR patients had a MRI sacroiliitis, and that minor allele prevalence of the different SNPs was about 0.3 in most cases, the power to identify an association with an alpha risk of 0.0033 was estimated between 74 and 80%.

Finally, to investigate whether the association between the SNPs were independently associated with MRI sacroiliitis, a multivariable analysis using logistic regression, backward procedure, was performed including other potential cofounding variables such as age, gender, *HLA-B27* presence, CRP, ASDAS-CRP and NSAIDs intake.

### Results

All of the 12 SNPs fit the Hardy-Weinberg equilibrium expectations ( $p > 0.05$ ) and had an allele frequency  $> 0.10$  in the DESIR cohort. The genotyping success rate was approximately 98.8%, and 645 patients could be enrolled in this study whose characteristics are summarised in Table 1.

Three SNPs located on the *ERAP1* gene (rs17482078, rs10050860, rs2287987) demonstrated strong linkage disequilibrium ( $r^2$  ranging between 0.97 and 0.99,  $D' = 1$ ), and a haplotype of these three loci was thus created and used for further analyses. Two SNPs located on the *IL23R* gene (rs2201841 and rs10889677) also showed strong linkage disequilibrium ( $r^2 = 0.96$ ,  $D' = 1$ ), and a haplotype including these two loci was created and used for further analyses.

### Association between *ERAP1*, *IL23R* and SIJ MRI inflammation

None of the three SNPs and the haplotype located on *ERAP1* was associated with SIJ MRI inflammation when applying Bonferroni correction.

**Table 1** Baseline characteristics of the patients enrolled

	Study population, <i>n</i> = 645
Age, med (IQR)	32.9 (26.5–39.7)
Gender, number of males (%)	299 (46.4)
Disease duration, months, med (IQR)	17.1 (9.6–26.5)
Positive <i>HLA-B27</i> , number (%)	403 (62.6)
BASDAI, med (IQR)	46 (29–61)
ASDAS-CRP, med (IQR)	2.7 (2.0–3.4)
CRP (mg/L), med (IQR)	3.2 (2–8)
NSAIDs intake, <i>n</i> (%)	451 (71.5)
Radiographic sacroiliitis, <i>n</i> (%)	184 (28.9)
mSASSS, med (IQR)	0 (0–0)
Presence of MRI sacroiliitis, <i>n</i> (%)	214 (34.2)
MRI SPARCC, med (IQR)	0 (0–4)
ASAS positive spinal MRI, <i>n</i> (%)	49/603 (8.1)
Spinal MRI Berlin score, med (IQR)	0 (0–0)

*BASDAI* Bath Ankylosing Spondylitis Disease Activity Index, *ASDAS-CRP* Ankylosing Spondylitis Disease Activity Score with CRP, *mSASSS* Modified Stoke Ankylosing Spondylitis Spine Score, *SPARCC* Spondyloarthritis Research Consortium of Canada scoring system (sacro-iliac joints MRI scoring system), *Berlin score* spinal MRI scoring system

After applying a Bonferroni correction, only the rs1004819, located on *IL23R*, remained significantly associated with the presence of SIJ MRI inflammation and was thus further investigated (Table 2). This locus was thus also associated with sacroiliac oedema size assessed by SPARCC score (*p* for the association, 0.001; Table 3, Fig. 1). However, this locus was neither associated with other inflammatory parameters (ASDAS CRP, BASDAI, CRP of MRI spinal inflammation assessed by Berlin score) nor radiographic sacroiliitis (Table 3).

#### Epistatic interaction between rs1004819 on *IL23R* and *HLA-B27* allele carriage

Epistatic interactions between the SNP of *IL23R* and *HLA-B27* were investigated to assess whether *HLA-B27* allele carriage could interact with the association between rs1004819 and MRI sacroiliitis using two different methods: the RERI method and PLINK epistasis software v1.07 [21]. No epistatic interaction was identified between rs1004819 and *HLA-B27* allele carriage for the association with MRI sacroiliitis.

#### Multivariable analysis assessing the risk of MRI sacroiliitis according to rs1004819 genotype

After logistic regression including other cofounding variables such as gender, age, *HLA-B27* presence, CRP, ASDAS-CRP and NSAIDs intake, rs1004819 genotype remained independently associated with MRI sacroiliitis (Table 4).

**Table 2** Association between MRI sacroiliac inflammation and *IL23R* and *ERAP1* SNP and haplotype genotypes

	Number of patients (%)	<i>p</i> value comparison of distribution	<i>p</i> value for Cochran-Armitage trend test
ERAP1			
rs27044			
GG	21 (39.62)	0.5	0.25
CG	98 (35.25)		
CC	94 (32.19)		
rs30187			
TT	36 (37.5)	0.07	0.04
CT	113 (37.5)		
CC	65 (28.4)		
rs27434			
GG	105 (30.3)	0.04	0.01
AG	92 (38.1)		
AA	16 (47.1)		
Haplotype CCT*			
0 copy	4 (14.8)	0.02	0.007
1 copy	55 (29.4)		
2 copies	153 (37.2)		
IL23R			
rs1004819			
TT	30 (42.3)	0.001	0.0005
CT	109 (40.5)		
CC	75 (26.5)		
rs10489629			
GG	35 (29.2)	0.3	0.1
AG	101 (33.8)		
AA	77 (38.1)		
rs1343151			
TT	24 (30.4)	0.02	0.02
CT	82 (29.5)		
CC	108 (40.3)		
rs11209032			
GG	74 (35.4)	0.03	0.01
AG	109 (47.3)		
AA	26 (41.3)		
Haplotype GA*			
0 copy	80 (28.9)	0.02	0.0054
1 copy	103 (37.6)		
2 copies	30 (44.1)		

\*: Haplotype CCT: rs17482078, rs10050860, rs2287987; haplotype GA: rs2201841, rs10889677

## Discussion

This work aimed to investigate the association between 12 loci located on *ERAP1* and *IL23R* genes and SIJ or

**Table 3** Association between rs1004819 located on *IL23R* genotypes and clinical and biological activity, SPARCC score and MRI-detected spinal inflammation

rs1004819, by genotype	TT	CT	CC	Comparison* across genotypes <i>p</i> value
BASDAI, med (IQR)	38 (24–53)	48 (30–62)	48 (28–62)	0.1
ASDAS-CRP med (IQR)	2.5 (1.7–3.3)	2.8 (2.0–3.4)	2.7 (2.0–3.4)	0.5
CRP, med (IQR)	3.6 (2.0–8.0)	3.5 (2.0–7.0)	3 (2.0–8.8)	0.3
SPARCC, med (IQR)	0.0 (0.0–8.0)	0.5 (0.0–5.5)	0.0 (0.0–2.0)	0.0008
Patients with MRI spinal inflammation, <i>n</i> (%)	11 (15.9)	20 (7.8)	18 (6.6)	0.03
Berlin score, med (IQR)	0 (0–1)	0 (0–0)	0 (0–0)	0.09

\**p* value with a Cochran-Armitage trend test in case of dichotomous variable and Cuzick trend tests in case of continuous variable

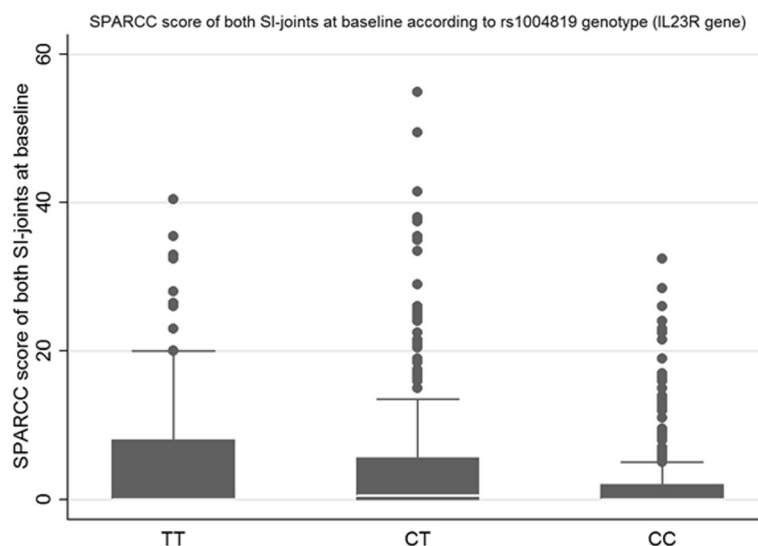
BASDAI Bath Ankylosing Spondylitis Disease Activity Index, ASDAS-CRP Ankylosing Spondylitis Disease Activity Score with CRP, mSASSS Modified Stoke Ankylosing Spondylitis Spine Score, SPARCC Spondyloarthritis Research Consortium of Canada scoring system (sacroiliac joints MRI scoring system), Berlin score spinal MRI scoring system

spinal MRI inflammation in a cohort of 625 patients with recent onset axial SpA (DESIR cohort). In this study, rs1004819 located on the *IL23R* gene was associated with the presence of MRI sacroiliitis and MRI bone oedema size assessed by the SPARCC score. However, this locus was not associated with the clinical and biological activity, MRI spinal inflammation nor with radiographic sacroiliitis. None of the SNPs studied on ERAP1 was significantly associated with SIJ or spinal MRI inflammation in this study.

IL-23 is a pro-inflammatory cytokine formed via the binding of a shared IL-12p40 unit to a p19 protein secreted primarily by dendritic cells, monocytes and macrophages [22]; IL-23 plays a role in the maintenance of immune responses by controlling T cell memory function and by activating the proliferation and survival of Th17 cells. IL-23 is thus a key cytokine in several

inflammatory diseases including SpA [23]. The *IL23R* gene is located on chromosome 1 (1p31). In recent years, new therapeutic biological agents targeting the IL-17/IL-23 pathway have proved effective in reducing disease activity, and studies have suggested a preventive role in the structural radiographic progression of spondyloarthritis and psoriatic arthritis [24, 25]. ERAP1 molecules encoded in the endoplasmic reticulum lumen play an important role in peptide trimming for presentation at the cell surface. Reduced trimming of peptides and consequently altered antigen presentation on HLA-B27 molecules is probably an important mechanism involved in AS development and protection [26].

Several studies have previously shown an association between rs11209026 and AS susceptibility [3], as well as radiographic sacroiliitis [27]. In our study, this locus was not genotyped because the allele frequency of this



**Fig. 1** SPARCC scores of sacroiliac joint MRI according to the genotypes of rs1004819 and GA haplotype of *IL23R*. SPARCC, Spondyloarthritis Research Consortium of Canada scoring system (sacroiliac joints MRI scoring system)



**Table 4** Logistic regression assessing the risk of MRI sacroiliitis and including rs1004819 genotype, age, gender, *HLA-B27* presence and NSAIDs intake

	OR [95%CI]	p value
rs1004819	0.71 [0.53–0.94]	0.02
age	–	NS
Gender	2.15 [1.46–3.19]	< 0.0001
CRP (per mg/L)	1.02 [1.00–1.03]	0.01
ASDAS-CRP	–	NS
<i>HLA-B27</i>	1.95 [1.27–2.97]	0.002
NSAIDs intake	–	NS

Age, ASDAS-CRP and NSAIDs intake were removed after backward procedure  
OR odds ratio, %95CI 95% confidence interval, NS non-significant

variant is very low (A allele frequency approximately 0.04 in the general population), and as the study involved a small sample, the power for identifying an association was allegedly too low to be conclusive.

No significant epistatic interaction was identified between *rs1004819* on *IL23R* and the presence of *HLA-B27*, thus indicating that the *IL23R* locus is associated with MRI inflammation independently of *HLA-B27* allele carriage.

This study has several limitations. Firstly, the work was set on a sample of 625 patients and multiple loci were tested; thus, the power to detect a difference was decreased. However, power calculation in SNPs where minor allele prevalence was about 0.3 revealed a power to detect a difference about 15% between 74 and 80%. Furthermore, we did not have a second sample to replicate our results, and these findings have to be further confirmed in an independent population. However, this locus is already known to be associated with AS susceptibility and it is established that MRI sacroiliitis can be considered as an early stage of radiographic sacroiliitis and thus predispose to AS disease. In this study, we chose to apply a candidate gene search strategy to identify association between loci already known as susceptibility markers of the disease and MRI inflammation in early SpA patients. Other strategies such as *IL23R* and *ERAPI* DNA sequencing could also be performed to further investigate the association between these genes and MRI inflammation in SpA. Finally, this study investigated only SpA patients with no control group. Thus, these findings identified associations between candidate genes and different phenotypes of SpA, and this study did not demonstrate here that these loci were SpA susceptibility markers.

To the best of our knowledge, this is the first study highlighting the association between genetic polymorphisms outside of the MHC region known to be associated with AS susceptibility and MRI inflammation in recent onset axial SpA patients. DESIR cohort imaging data was centrally scored by experienced readers blinded

to the clinical data, which improves imaging data confidence. The rs1004819, located on *IL23R*, that is associated with MRI sacroiliitis, has proved to be strongly associated with disease susceptibility. It has also proved to be an apparent marker of inflammatory disease in patients diagnosed with recent onset axial SpA, since it was also associated with MRI sacroiliitis oedema size, assessed via the SPARCC scoring system, and with the presence of an MRI spinal inflammatory lesion.

## Conclusion

In summary, this study identified an association between one locus on the *IL23R* gene and MRI inflammation located on the spine and SIJ. However, these findings should be replicated in other populations and the role played by these polymorphisms in *IL23R* gene expression should be further explored.

## Abbreviations

AS: Ankylosing spondylitis; ASAS: Assessment of Spondyloarthritis international Society; ASDAS: Ankylosing Spondylitis Disease Activity Score; axSpA: Axial spondyloarthritis; BASDAI: Bath Ankylosing Spondylitis Disease Activity Index; BASFI: Bath Ankylosing Spondylitis Functional Index; bDMARD: Biologic disease-modifying antirheumatic drugs; CRP: C-reactive protein; DESIR: DEvenir des Spondyloarthrites Indifférenciées Récentes; ESSG: European Spondyloarthropathy Study Group; GWA: Genome-wide association; HLA: Human leucocyte antigen; HWE: Hardy-Weinberg equilibrium; IBD: Inflammatory bowel disease; MHC: Major histocompatibility complex; MRI: Magnetic resonance imaging; NSAID: Non-steroidal anti-inflammatory drug; PsA: Psoriatic arthritis; SD: Standard deviation; SIJ: Sacroiliac joints; SNP: Single nucleotide polymorphism; SpA: Spondyloarthritis; SPARCC: Spondyloarthritis Research Consortium of Canada; TNF: Tumour necrosis factor; VAS: Visual analogue scale

## Acknowledgements

The DESIR study is conducted with Assistance Publique Hopitaux de Paris as the sponsor. The DESIR study is also under the umbrella of the French Society of Rheumatology, which financially supports the cohort. An unrestricted grant from Pfizer has been allocated for the first 10 years. The DESIR cohort is conducted under the control of Assistance publique Hopitaux de Paris via the Clinical Research Unit Paris Centre and under the umbrella of the French Society of Rheumatology and Institut national de la sante et de la recherche medicale (Inserm). Database management is performed within the Department of Epidemiology and Biostatistics (Professeur Jean-Pierre Daures, D.J.M., Nimes, France). We also wish to thank the different regional participating centres: Pr Maxime Dougados (Paris-Cochin B), Pr Andre Kahan (Paris-Cochin A), Pr Philippe Dieudé (Paris-Bichat), Pr Bruno Fautrel (Paris-La Pitie-Salpetriere), Pr Francis Berenbaum (Paris-Saint-Antoine), Pr Pascal Claudepierre (Creteil), Pr Maxime Breban (Boulogne-Billancourt), Dr Bernadette Saint-Marcoux (Aulnay-sous-Bois), Pr Philippe Goupille (Tours), Pr Jean Francis Maillefert (Dijon), Dr Emmanuelle Dernis (Le Mans), Pr Daniel Wendling (Besancon), Pr Bernard Combe (Montpellier), Pr Liana Euller-Ziegler (Nice), Pr Pascal Richette (ParisLariboisiere), Pr Pierre Lafforgue (Marseille), Dr Patrick Boumier (Amiens), Pr Martin Soubrier (ClermontFerrand), Dr Nadia Mehse (Bordeaux), Pr Damien Loeuille (Nancy), Pr Rene-Marc Flipo (Lille), Pr Alain Saraux (Brest), Pr Xavier Mariette (Le Kremlin-Bicetre), Pr Alain Cantagrel (Toulouse), Pr Olivier Vittecoq (Rouen). We wish to thank the research nurses, the staff members of the Clinical Research Unit of Paris Centre, the staff members of the Biological Resource Center of Bichat Hospital, the staff members of the Department of Statistics of Nimes and all the investigators, and in particular Jerome Allain, Emmanuelle Dernis, Salah Ferkal, Clement Prati, Marie-Agnes Timsit, Eric Toussiot for active patient recruitment and monitoring." The biological resources centre (Paris, Bichat Hospital Claude Bernard – CRB BCB, Certificate number 34457, S. Tubiana) was in charge of centralising and managing biological data collection".

## Funding

This work was supported by the French Rheumatology Society (SFR).

## Availability of data and materials

This study used data from the DESIR database locked on June 30th 2010. The datasets used and/or analysed during the current study are available from the DESIR cohort (lacohteddesir.cch@gmail.com) on reasonable request.

## Authors' contributions

ARW contributed to the conception of the study, data analysis, interpretation of the results and writing of the manuscript. CL contributed to the data analysis and interpretation of the results. DN contributed to the data analysis. YD, PC and AC contributed to the interpretation of the results. AR contributed to the study conception and interpretation of the results. All the authors take responsibility for the integrity of the work as a whole, from its inception to the published article. They specify that they had full access to all the data in the study and take responsibility for the integrity of the data and the accuracy of the data analysis. They give permission to reproduce published materials, to report sensitive personal information, to use illustrations of identifiable persons or to name persons for their contributions. All authors read and approved the final manuscript.

## Ethics approval and consent to participate

The study complied with Good Clinical Practice Guidelines ([clinicaltrials.gov: NCT01648907](https://clinicaltrials.gov/ct2/show/NCT01648907), <https://clinicaltrials.gov/ct2/show/NCT01648907>) and was approved by the appropriate medical ethic committee (CPP Ile-de-France III, submission number P070302).

## Consent for publication

Patients gave informed consent before the start of the study including permission to publish any individual data treated anonymously.

## Competing interests

The authors declare that they have no competing interests.

## Publisher's Note

Springer Nature remains neutral with regard to jurisdictional claims in published maps and institutional affiliations.

## Author details

<sup>1</sup>Centre de rhumatologie, CHU de Toulouse, UMR 1027, Inserm, Université Paul Sabatier Toulouse III, Toulouse, France. <sup>2</sup>Centre de rhumatologie, CHU de Toulouse, UMR 1043, CPTP, Inserm, Université Paul Sabatier Toulouse III, Toulouse, France. <sup>3</sup>Centre de rhumatologie, CHU de Toulouse, Toulouse, France. <sup>4</sup>Département de Rhumatologie, Henri Mondor Hospital, APHP, Université Paris Est Créteil, EA 7379 – EpidermE, F-94010 Créteil, France.

Received: 4 September 2018 Accepted: 28 December 2018

Published online: 15 January 2019

## References

- Ellinghaus D, Jostins L, Spain SL, Cortes A, Bethune J, Han B, Park YR, Raychaudhuri S, Pouget JG, Hubenthal M, et al. Analysis of five chronic inflammatory diseases identifies 27 new associations and highlights disease-specific patterns at shared loci. *Nat Genet.* 2016;48(5):510–8.
- Li Z, Brown MA. Progress of genome-wide association studies of ankylosing spondylitis. *Clin Transl Immunol.* 2017;6(12):e163.
- International Genetics of Ankylosing Spondylitis C, Cortes A, Hadler J, Pointon JP, Robinson PC, Karaderi T, Leo P, Cremin K, Pryce K, Harris J, et al. Identification of multiple risk variants for ankylosing spondylitis through high-density genotyping of immune-related loci. *Nat Genet.* 2013;45(7):730–8.
- Bettencourt BF, Rocha FL, Alves H, Amorim R, Caetano-Lopes J, Vieira-Sousa E, Pimentel-Santos F, Lima M, Porto G, Branco JC, et al. Protective effect of an ERAP1 haplotype in ankylosing spondylitis: investigating non-MHC genes in HLA-B27-positive individuals. *Rheumatology (Oxford).* 2013;52(12):2168–76.
- Evans DM, Spencer CC, Pointon JJ, Su Z, Harvey D, Kochan G, Oppermann U, Diltz A, Pirinen M, Stone MA, et al. Interaction between ERAP1 and HLA-B27 in ankylosing spondylitis implicates peptide handling in the mechanism for HLA-B27 in disease susceptibility. *Nat Genet.* 2011;43(8):761–7.
- García-Medell N, Sanz-Bravo A, Alvarez-Navarro C, Gomez-Molina P, Barnea E, Marcilla M, Admon A, de Castro JA. Peptide handling by HLA-B27 subtypes influences their biological behavior, association with ankylosing spondylitis and susceptibility to endoplasmic reticulum aminopeptidase 1 (ERAP1). *Mol Cell Proteomics.* 2014;13(12):3367–80.
- Davidson SI, Jiang L, Cortes A, Wu X, Glazov EA, Donskoi M, Zheng Y, Danoy PA, Liu Y, Thomas GP, et al. Brief report: high-throughput sequencing of IL23R reveals a low-frequency, nonsynonymous single-nucleotide polymorphism that is associated with ankylosing spondylitis in a Han Chinese population. *Arthritis Rheum.* 2013;65(7):1747–52.
- Reveille JD, Sims AM, Danoy P, Evans DM, Leo P, Pointon JJ, Jin R, Zhou X, Bradbury LA, Appleton LH, et al. Genome-wide association study of ankylosing spondylitis identifies non-MHC susceptibility loci. *Nat Genet.* 2010;42(2):123–7.
- Dougados M, Etcheto A, Molto A, Alonso S, Bouvet S, Daures JP, Landais P, d'Agostino MA, Berenbaum F, Breban M, et al. Clinical presentation of patients suffering from recent onset chronic inflammatory back pain suggestive of spondyloarthritis: the DESIR cohort. *Joint Bone Spine.* 2015;82(5):345–51.
- Rudwaleit M, Landewe R, van der Heijde D, Listing J, Brandt J, Braun J, Burgos-Vargas R, Collantes-Estevez E, Davis J, Dijkman B, et al. The development of Assessment of SpondyloArthritis international Society classification criteria for axial spondyloarthritis (part I): classification of paper patients by expert opinion including uncertainty appraisal. *Ann Rheum Dis.* 2009;68(6):770–6.
- Amor B, Dougados M, Mijiyawa M. Criteria of the classification of spondylarthropathies. *Revue du rhumatisme et des maladies osteo-articulaires.* 1990;57(2):85–9.
- Dougados M, van der Linden S, Juhlin R, Huitfeldt B, Amor B, Calin A, Cats A, Dijkman B, Olivieri I, Pasero G, et al. The European Spondylarthropathy Study Group preliminary criteria for the classification of spondylarthropathy. *Arthritis Rheum.* 1991;34(10):1218–27.
- van der Linden S, Valkenburg HA, Cats A. Evaluation of diagnostic criteria for ankylosing spondylitis. A proposal for modification of the New York criteria. *Arthritis Rheum.* 1984;27(4):361–8.
- Rudwaleit M, Jurik AG, Hermann KG, Landewe R, van der Heijde D, Baraliakos X, Marzo-Ortega H, Ostergaard M, Braun J, Sieper J. Defining active sacroiliitis on magnetic resonance imaging (MRI) for classification of axial spondyloarthritis: a consensual approach by the ASAS/OMERACT MRI group. *Ann Rheum Dis.* 2009;68(10):1520–7.
- van den Berg R, Lenczner G, Thevenin F, Claudepierre P, Feydy A, Reijnierse M, Saraux A, Rahmouni A, Dougados M, van der Heijde D. Classification of axial SpA based on positive imaging (radiographs and/or MRI of the sacroiliac joints) by local rheumatologists or radiologists versus central trained readers in the DESIR cohort. *Ann Rheum Dis.* 2015;74(11):2016–21.
- Maksymowych WP, Inman RD, Salonen D, Dhillon SS, Krishnananthan R, Stone M, Conner-Spady B, Palsat J, Lambert RG. Spondyloarthritis Research Consortium of Canada magnetic resonance imaging index for assessment of spinal inflammation in ankylosing spondylitis. *Arthritis Rheum.* 2005;53(4):502–9.
- Hermann KG, Baraliakos X, van der Heijde DM, Jurik AG, Landewe R, Marzo-Ortega H, Ostergaard M, Rudwaleit M, Sieper J, Braun J, et al. Descriptions of spinal MRI lesions and definition of a positive MRI of the spine in axial spondyloarthritis: a consensual approach by the ASAS/OMERACT MRI study group. *Ann Rheum Dis.* 2012;71(8):1278–88.
- Braun J, Baraliakos X, Golder W, Golder W, Rudwaleit M, Listing J, Bollow M, Sieper J, Van Der Heijde D. Magnetic resonance imaging examinations of the spine in patients with ankylosing spondylitis, before and after successful therapy with infliximab: evaluation of a new scoring system. *Arthritis Rheum.* 2003;48(4):1126–36.
- de Hooge M, Piatat JB, Reijnierse M, van der Heijde D, Claudepierre P, Saraux A, Dougados M, Feydy A. Assessment of typical SpA lesions on MRI of the spine: do local readers and central readers agree in the DESIR-cohort at baseline? *Clin Rheumatol.* 2017;36(7):1551–9.
- van den Berg R, Lenczner G, Feydy A, van der Heijde D, Reijnierse M, Saraux A, Rahmouni A, Dougados M, Claudepierre P. Agreement between clinical practice and trained central reading in reading of sacroiliac joints on plain pelvic radiographs. Results from the DESIR cohort. *Arthritis Rheum.* 2014;66(9):2403–11.
- Lin JH, Lee WC. Testing for mechanistic interactions in long-term follow-up studies. *PLoS One.* 2015;10(3):e0121638.
- Oppmann B, Lesley R, Blom B, Timans JC, Xu Y, Hunte B, Vega F, Yu N, Wang J, Singh K, et al. Novel p19 protein engages IL-12p40 to form a



- cytokine, IL-23, with biological activities similar as well as distinct from IL-12. *Immunity*. 2000;13(5):715–25.
23. Wang X, Lin Z, Wei Q, Jiang Y, Gu J. Expression of IL-23 and IL-17 and effect of IL-23 on IL-17 production in ankylosing spondylitis. *Rheumatol Int*. 2009; 29(11):1343–7.
  24. Baeten D, Sieper J, Braun J, Baraliakos X, Dougados M, Emery P, Deodhar A, Porter B, Martin R, Andersson M, et al. Secukinumab, an interleukin-17A inhibitor, in ankylosing spondylitis. *N Engl J Med*. 2015;373(26):2534–48.
  25. McInnes IB, Kavanaugh A, Gottlieb AB, Puig L, Rahman P, Ritchlin C, Brodmerkel C, Li S, Wang Y, Mendelsohn AM, et al. Efficacy and safety of ustekinumab in patients with active psoriatic arthritis: 1 year results of the phase 3, multicentre, double-blind, placebo-controlled PSUMMIT 1 trial. *Lancet*. 2013;382(9894):780–9.
  26. Garcia-Medel N, Sanz-Bravo A, Van Nguyen D, Galocha B, Gomez-Molina P, Martin-Esteban A, Alvarez-Navarro C, de Castro JA. Functional interaction of the ankylosing spondylitis-associated endoplasmic reticulum aminopeptidase 1 polymorphism and HLA-B27 in vivo. *Mol Cell Proteomics*. 2012;11(11):1416–29.
  27. Kadi A, Costantino F, Izac B, Leboime A, Said-Nahal R, Garchon HJ, Chiochia G, Breban M. Brief report: the IL23R nonsynonymous polymorphism rs11209026 is associated with radiographic sacroiliitis in spondyloarthritis. *Arthritis Rheum*. 2013;65(10):2655–60.

**Ready to submit your research? Choose BMC and benefit from:**

- fast, convenient online submission
- thorough peer review by experienced researchers in your field
- rapid publication on acceptance
- support for research data, including large and complex data types
- gold Open Access which fosters wider collaboration and increased citations
- maximum visibility for your research: over 100M website views per year

**At BMC, research is always in progress.**

Learn more [biomedcentral.com/submissions](https://biomedcentral.com/submissions)

