



HAL
open science

MAIT Cells Display a Specific Response to Type 1 IFN Underlying the Adjuvant Effect of TLR7/8 Ligands

Marion Pavlovic, Christelle Gross, Chahinaize Chili, Thomas Secher,
Emmanuel Treiner

► **To cite this version:**

Marion Pavlovic, Christelle Gross, Chahinaize Chili, Thomas Secher, Emmanuel Treiner. MAIT Cells Display a Specific Response to Type 1 IFN Underlying the Adjuvant Effect of TLR7/8 Ligands. *Frontiers in Immunology*, 2020, 11 (article 2097), pp.1-16. 10.3389/fimmu.2020.02097 . hal-03154944

HAL Id: hal-03154944

<https://ut3-toulouseinp.hal.science/hal-03154944>

Submitted on 1 Mar 2021

HAL is a multi-disciplinary open access archive for the deposit and dissemination of scientific research documents, whether they are published or not. The documents may come from teaching and research institutions in France or abroad, or from public or private research centers.

L'archive ouverte pluridisciplinaire **HAL**, est destinée au dépôt et à la diffusion de documents scientifiques de niveau recherche, publiés ou non, émanant des établissements d'enseignement et de recherche français ou étrangers, des laboratoires publics ou privés.



MAIT Cells Display a Specific Response to Type 1 IFN Underlying the Adjuvant Effect of TLR7/8 Ligands

Marion Pavlovic¹, Christelle Gross¹, Chahinaize Chili¹, Thomas Secher¹ and Emmanuel Treiner^{1,2,3*}

¹ INSERM UMR 1043, Centre de Physiopathologie de Toulouse-Purpan, Toulouse, France, ² Paul Sabatier University Toulouse III, Toulouse, France, ³ Laboratory of Immunology, Toulouse University Hospital, Toulouse, France

OPEN ACCESS

Edited by:

Paul W. Bland,
University of Gothenburg, Sweden

Reviewed by:

Joana Dias,
Vaccine Research Center (NIAID),
United States
Alexandra Jane Corbett,
The University of Melbourne, Australia

*Correspondence:

Emmanuel Treiner
emmanuel.treiner@inserm.fr

Specialty section:

This article was submitted to
Mucosal Immunity,
a section of the journal
Frontiers in Immunology

Received: 27 January 2020

Accepted: 03 August 2020

Published: 08 September 2020

Citation:

Pavlovic M, Gross C, Chili C, Secher T and Treiner E (2020) MAIT Cells Display a Specific Response to Type 1 IFN Underlying the Adjuvant Effect of TLR7/8 Ligands. *Front. Immunol.* 11:2097. doi: 10.3389/fimmu.2020.02097

Mucosal-associated invariant T (MAIT) cells constitute a highly conserved subset of effector T cells with innate-like recognition of a wide array of bacteria and fungi in humans. Harnessing the potential of these cells could represent a major advance as a new immunotherapy approach to fight difficult-to-treat bacterial infections. However, despite recent advances in the design of potent agonistic ligands for MAIT cells, it has become increasingly evident that adjuvants are required to elicit potent antimicrobial effector functions by these cells, such as IFN γ production and cytotoxicity. Indeed, TCR triggering alone elicits mostly barrier repair functions in MAIT cells, whereas an inflammatory milieu is required to drive the antibacterial functions. Cytokines such as IL-7, IL-12 and IL-18, IL-15 or more recently type 1 IFN all display an apparently similar ability to synergize with TCR stimulation to induce IFN γ production and/or cytotoxic functions *in vitro*, but their mechanisms of action are not well established. Herein, we show that MAIT cells feature a build-in mechanism to respond to IFN α . We confirm that IFN α acts directly and specifically on MAIT cells and synergizes with TCR/CD3 triggering to induce maximum cytokine production and cytotoxic functions. We provide evidences suggesting that the preferential activation of the Stat4 pathway is involved in the high sensitivity of MAIT cells to IFN α stimulation. Finally, gene expression data confirm the specific responsiveness of MAIT cells to IFN α and pinpoints specific pathways that could be the target of this cytokine. Altogether, these data highlight the potential of IFN α -inducing adjuvants to maximize MAIT cells responsiveness to purified ligands in order to induce potent anti-infectious responses.

Keywords: MAIT cells, type 1 interferons, co-stimulation, cytokines, vaccines

INTRODUCTION

Mucosal-associated invariant T cells (MAIT) represent one of the largest subsets of innate T cells in humans, making up on average 3% of circulating T cells in healthy subjects (1, 2). Their semi-invariant TCR repertoire is hard-wired to bind conserved microbial ligands associated with the monomorphic MHC-related 1 (MR1) molecule (3–7). The most potent ligands identified thus far

are pyrimidines produced from the vitamin B2 (or riboflavin) derivatives, such as 5-OP-RU (8, 9). A large number of yeasts and bacteria species are riboflavin producers and therefore synthesize these ligands, making them targets for MAIT cells (10, 11). Upon activation, MAIT cells quickly gain the ability to kill infected targets in a perforin- and granzyme/granulysin-dependent manner, as well as to produce inflammatory cytokines such as IFN γ , TNF α , GM-CSF, and IL-17 (1, 12–15). Although the network of cells interacting with, or influenced by, MAIT cells remains to be detailed, they probably also exert indirect protective functions by increasing dendritic cell (DC) maturation and B cell activation and by recruiting other immune effectors (16–18). The “innateness” of MAIT cells (19) relies both on a specific intra-thymic differentiation program, leading to acquisition of a memory phenotype and expression of specific transcription factors associated with effector functions (such as PLZF), as well as with a gradual peripheral expansion and seeding into anatomical locations directly (gut and lung mucosae) or indirectly (liver) interfacing with the environment (20–29). Importantly, MAIT cell activation by pathogens has been shown *in vivo* in human infections and could be linked to disease outcome in some conditions (30–35). Thus, MAIT cells act as innate-like T cells, recognizing highly conserved, broadly expressed microbial ligands at primary sites of pathogen infection and dissemination, and display both direct antimicrobial functions as well as the ability to influence subsequent innate and adaptive responses. The observation that all human subjects analyzed thus far dedicate a significant proportion of their T cell compartment to this specific microbial metabolite recognition system in a MHC-unrestricted manner has prompted a major interest in their potential use as targets of immune intervention in major, life-threatening infectious diseases such as tuberculosis (36).

Virtually all circulating MAIT cells display an effector-memory (CD45RA⁺CCR7⁻) phenotype and, as such, display rapid effector functions upon TCR activation. However, in contrast with other T cells with similar phenotypes, their response is blunted both *in vitro* and *in vivo* (37, 38). TCR triggering with anti-CD3 mAbs or MR1 ligands is not sufficient to induce significant IFN γ production and cytotoxic functions (39). In fact, in contrast with conventional memory CD8 T cells, resting MAIT cells express low levels of perforin and almost few granzymes, with the exception of granzyme A (5, 12, 15, 40). In contrast, activation of MAIT cells with bacteria induces full effector functions, suggesting that TLR ligands and their downstream signaling are crucial for MAIT cell activation (12, 41). Indeed, co-administration of 5-OP-RU with TLR ligands is necessary to activate and recruit MAIT cells in mice (37, 42). In humans, TLR8 ligands have been identified as potent co-activators of MAIT cells through the release of IL-12 and IL-18 by TLR-activated monocytes (43). Several laboratories have shown the potency of IL-12 + IL-18 as MAIT cells co-stimulators, but other cytokines may have similar effects, such as IL-7 (15, 39, 44–47). It is likely that these requirements for co-stimulation are the result of some kind of tolerogenic process to avoid overt stimulation of MAIT cells by the microbiota-derived metabolites in the absence of danger (48–50). Nevertheless, this is an issue

when considering the prospect of immune intervention targeting MAIT cells for protection. Further, a thorough description of the cellular and molecular requirement for potent MAIT cell activation is also important to our understanding of their contribution to natural immunity against pathogens, especially for microorganisms able to evade the immune system, such as *Mycobacterium tuberculosis*.

In this report, we reassessed *in vitro* the human MAIT cells response to TLR7/8 ligands. We show that type 1 IFN play a major role in the co-stimulation of MAIT cells and provide strong evidences that these cells display a specific signaling and transcriptional program upon IFN α stimulation.

MATERIALS AND METHODS

Blood Samples

Blood samples were obtained from buffy coats of healthy donors under an agreement with the Etablissement Français du Sang (EFS)—Midi-Pyrénées, in accordance with the EFS ethical guidelines. PBMC were isolated after centrifugation in a density gradient (Pancol, PAN Biotech) and frozen in DMSO before use. Experiments were performed after thawing except for phospho-flow and microarray analyses where fresh cells were used.

Ethics Statement

Blood samples from anonymous healthy donors were obtained from Etablissement Français du Sang (EFS, the French National Blood Agency). Sample use for scientific purposes was carried out in accordance with convention between EFS and Centre de Physiopathologie Toulouse-Purpan. According to French law, no agreement from a local ethic committee was required.

Cell Stimulations

Cell stimulations were performed in RPMI 1640 supplemented with antibiotics and 10% FCS. PBMC were plated at 5×10^6 cells/ml in tissue culture-treated 96-well plates. R848 (10 μ g/ml), gardiquimod (1 μ g/ml) (both from Invivogen), IFN α 2b (1000 IU/ml; Schering-Plough), IL-12 (100 ng/ml; Peprotech), and IL-18 (100 ng/ml; Peprotech) were added to the cells for 3 h before addition of OKT3 (10 ng/ml; Muromonab, Janssen-Cilag). For blocking experiments, anti-IFN α β R chain 2 (Merck Millipore), anti-IL-12 (BD Biosciences), anti-IL-18 (RD systems) or an isotype control (RD systems) was incubated with the cells 1 h before any stimulation. For the detection of intracellular cytokines, 3 μ g/ml of Brefeldin A (Thermo Fisher Scientific) was added 1 h after OKT3. After 16 h of incubation, cells were harvested and processed for flow cytometry. For phospho-flow and imaging cytometry experiments, cells were incubated with 10^4 IU/ml of IFN α 2b for 15 min before processing.

Cell Subset Isolation

For QRT-PCR experiments and functional studies, PBMC were stained with anti-TCRV α 7.2-PE (Miltenyi Biotec), washed, and incubated with anti-PE microbeads (Miltenyi Biotec). After washing, cells were processed for positive selection with the autoMacs Pro Separator (Miltenyi Biotec) and the positive

TCRV α 7.2 fraction was collected. These cells were further stained with anti-CD5, anti-CD8, anti-CD45RA, and anti-CD161, and the CD5⁺CD8⁺TCRV α 7.2⁺CD45RA⁻CD161⁺ MAIT cells and the CD5⁺CD8⁺TCRV α 7.2⁺CD45RA⁻CD161⁻ conventional memory CD8 were FACS-Sorted. For microarray analysis, untouched CD8 T cells from 4 healthy donors were purified from fresh PBMC with the CD8 T cell Isolation Kit (Miltenyi Biotec), according to the manufacturer's instructions. The purified fractions were stained with anti-TCR V α 7.2, CD45RA and CD161, and the TCRV α 7.2⁺CD45RA⁻CD161⁺ MAIT cells and the TCRV α 7.2⁻CD45RA⁻CD161⁻ memory CD8 T cell fractions were electronically sorted to a purity >98%. Cell sorting was performed with a FACS Aria SORP equipped with four lasers (488 nm, 633 nm, 405 nm, and 375 nm) (Becton Dickinson).

Flow Cytometry

Extracellular stainings were performed by incubating cells with the appropriate concentration of antibodies for 15 min at +4°C, washing, and resuspending cells in PBS with 1% FCS. For MAIT cell identification, we chose to use the CD5 (sometimes together with CD2) marker as a mean to avoid artifacts resulting in CD3 downregulation induced by OKT3 stimulation. Intracellular stainings for granzyme B, perforin, and cytokines were performed after extracellular stainings and fixation and permeabilization with the Cytotfix/CytoPerm (BD Biosciences), by incubating cells for 1 h with the appropriate concentrations of antibodies. For phosphoflow analyses, fresh cells were first stained with anti-CD161, washed, fixed with Max Buffer Phosflow (BD Biosciences), and permeabilized with Perm Buffer III (BD Biosciences). Cells were then stained with anti-CD8, anti-CD45RA, and either an anti-pSTAT4 or IgG2a isotype control for 1 h, before washing and analysis. The following antibodies were used: anti-TCRV α 7.2 PE, anti-TCRV α 7.2 FITC, anti-TCRV α 7.2 PeCy7 (clone 3C10, Biolegend), anti-IFN γ FITC (clone 45-15), anti-CD8 VioBlue (clone B135/80), anti-CD107a FITC, anti-CD107a PE (clone H4A3), anti-CD8 PE (clone BW135/80), anti-CD45RA Viogreen, anti-CD45RA PE Vio770 (clone REA562), anti-CCL4 PE, anti-CCL4 APC (REA511), anti-CD161 PE Vio770, anti-CD161 APC (clone 191B8), anti-Granzyme B PE (clone REA226), anti-CD5 APC Vio770, anti-CD5 VioBlue (clone UCHT2), anti-CD2 Percp Vio700 (clone LT2), anti-TNF α FITC, anti-TNF α PE (clone cA2) (all from Miltenyi Biotec), anti-STAT1 (pY701) eFluor450 (clone KIKSI0803, eBiosciences), IgG1 isotype control eFluor450 (P3.3.2.8.1, eBiosciences), anti-STAT4 (clone 38/p-Stat4, pY693) AF488 (BD Biosciences), and IgG2a isotype control AF488 (BD Biosciences).

Data acquisitions were performed on a MACSQuant (Miltenyi Biotec), and data were analyzed with FlowJo (BD Biosciences).

Imaging Flow Cytometry

Untouched CD8T cells were enriched from the PBMC of healthy donors by magnetic depletion with the CD8 T Cell Isolation Kit (Miltenyi Biotec). Cells were stimulated for 15 min with 1000 IU/ml IFN α in FCS/ATB-supplemented FCS and washed. Surface staining was performed with anti-CD5 APC Vio770, CD8 VioBlue, and CD161 APC, followed by fixation and permeabilization as described for the phosphoflow experiments,

and stained with either anti-pSTAT4 (Y693) AF488 or IgG2a Isotype control. Data were acquired on the Amnis Image Stream X Mark II and analyzed with IDEAS software (Merck Millipore).

QRT-PCR

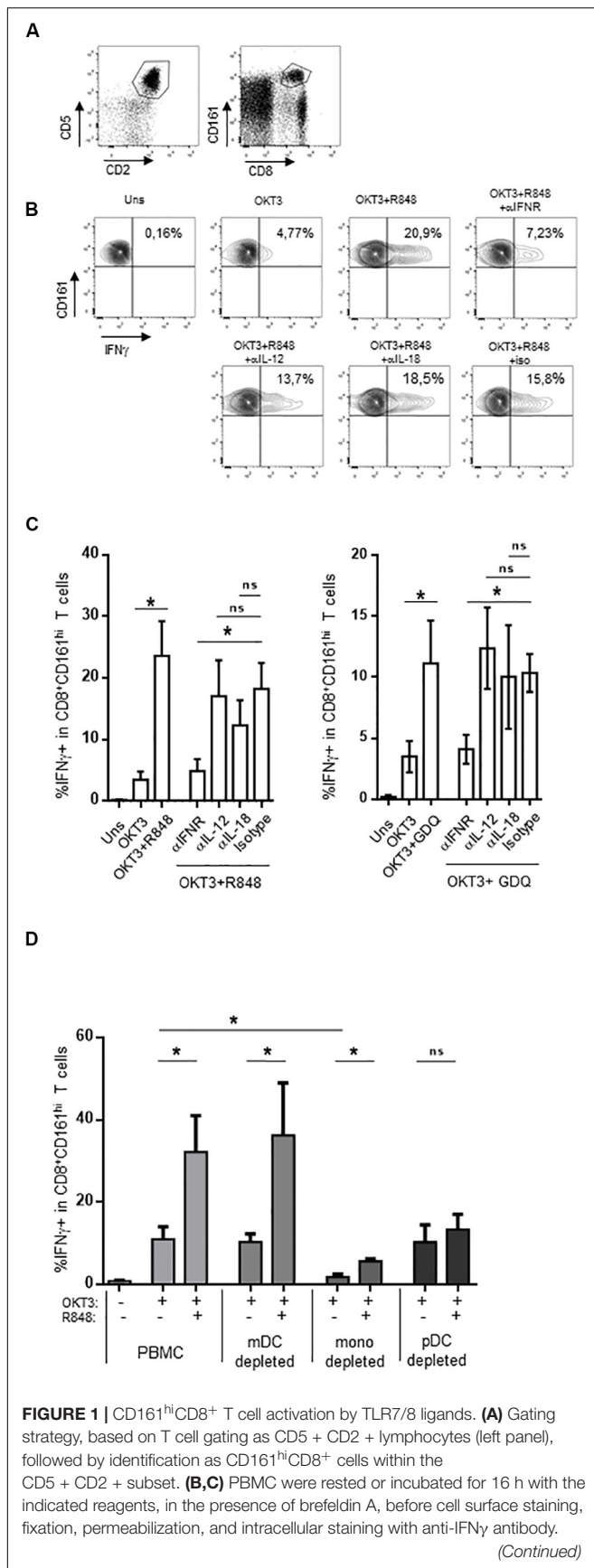
mRNA was extracted from isolated MAIT and memory CD8 T cells using the microRNA easy plus kit (Qiagen), according to the manufacturer's instructions. Protein contamination was excluded by quantification of the sample absorbance at 260/280. mRNA samples were reverse transcribed with the SuperScript III First-Strand Synthesis System for RT-PCR (Thermo Fisher Scientific). QRT-PCR was performed with the SYBR Green Real-Time PCR Master Mix (Thermo Fisher Scientific), at a hybridization temperature of 58°C, on a LightCycler 480 (Roche). The following primers were used: STAT4 5'-GGCAATTGGAGAACTAGAGG-3' and 5'-AGGGTGGGTTGGCATAACAT-3'; STAT1: 5'-TCACATTCA CATGGGTGGAG-3' and 5'-CAAAGGCATGGTCTTTGTCA-3'; GAPDH: 5'-ATCTTCTTTTTCGTCGCCAG-3' and 5'-ACGACCAAATCCGTTGACTCC-3'.

Microarray Analysis

Gene expression analysis was performed on paired purified MAIT and conventional memory CD8 T cells from healthy donors ($n = 4$), either unstimulated or stimulated with 2 000 IU/ml of IFN α for 90 min at the GeT facility (INSA, Toulouse, France). RNA was extracted with microRNA easy plus kit (Qiagen), according to the manufacturer's instructions. The quality of RNA was determined with an automated electrophoresis tool (Agilent Technologies, 2100 Bioanalyzer system) and the RNA quantity with a UV-Vis spectrophotometer (Thermo, NanoDrop 2100) at 260 nm/280 nm/230 nm absorbance. 500 pg of total RNA was used for sample preparation with the GeneChip Pico Reagent Kit. Following fragmentation, 5.5 μ g of cRNA was hybridized for 16 hr at 45°C on human GeneChip Clariom S Array. GeneChips were washed and stained in the Affymetrix Fluidics Station 450. Then, GeneChips were scanned using the GeneArray Scanner 3000 7G and images were analyzed using Command Console software to obtain the CEL files with raw data (values of fluorescent intensity). Microarray analysis was carried out by the Transcriptome Analysis Console (TAC, version 4.0) software certified by Affymetrix. Raw data were transformed in log₂, and Affymetrix Gene microarrays were normalized with the "Signal Space Transformation-Robust Multichip Analysis" (SST-RMA) method. After summarization of probes, a unique value for each gene was obtained. To remove false positives, the false discovery rate correction was applied with a p -value-adjusted threshold of 0.05.

Statistical Analysis

Statistical analyses were performed with the GraphPad Prism 6.0 software. Paired or unpaired, two-tailed, and non-parametric Mann-Whitney tests were used to assess statistical significance. A p -value < 0.05 was considered significant.

**FIGURE 1 |** Continued

CD161^{hi}CD8⁺ T cells were identified as described in **(A)**. **(B)** A representative example obtained with R848 in one donor. **(C)** The cumulative frequencies (mean \pm SEM) of IFN γ -producing CD161^{hi} CD8⁺ T cells when R848 (left panel) or GDQ (right panel) was used as a co-stimulator, $N = 4$. **(D)** PBMC were used unseparated or after depletion of CD11c⁻, CD14⁻, or CD123-expressing cells, and stimulated with OKT3 in the presence or absence of R848. After staining, CD161^{hi} CD8⁺ T cells were analyzed for intracellular IFN γ production. Cumulative frequencies (mean \pm SEM) of IFN γ + MAIT cells are shown, $N = 4$. Mann-Whitney test was used to compare frequencies. * $p < 0.05$; ns, not significant.

RESULTS

Role of Type 1 IFN in the Adjuvant Effect of TLR Agonists on CD161^{hi}CD8⁺ T Cells

Compared to conventional memory T cells, MAIT cells are hypofunctional to TCR-dependent stimulation, resulting in a blunted functional response to purified antigens or anti-CD3 stimulation (37, 38). A strong response can be obtained by the use of adjuvants such as TLR ligands. In particular, the TLR7/8 ligand R848 strongly activates monocytes, which in turn secrete IL-12 and IL-18; these two cytokines strongly potentiate TCR-dependent MAIT cells response. We reasoned that other signals could be involved in this indirect effect of R848; in particular, R848 binds TLR8 but also TLR7, which is strongly expressed by IFN α -secreting plasmacytoid dendritic cells (51–54). We thought that type 1 interferons could also be involved in the potentiation of MAIT cell activation, and tested this hypothesis in whole PBMC. We stimulated PBMC with a low dose of soluble OKT3 (sOKT3), with or without a previous incubation with R848, and quantified the frequency of MAIT cells expressing intracellular IFN γ . Anti-CD3 stimulation induces CD3 downregulation and may lead to experimental artifacts (55), precluding the use of both anti-CD3 and anti-TCR mAbs. It is well known that MAIT cells comprise >90% of CD8⁺CD161^{hi} T cells (56). Thus, we used the CD5⁺CD2⁺CD8⁺CD161^{hi} phenotype to study a CD8⁺ MAIT cell-enriched subset (**Figure 1A**). OKT3 stimulation alone resulted in a low proportion of IFN γ +CD161^{hi}CD8⁺ T cells (**Figures 1B,C**), whereas the presence of R848 dramatically increased this functional response, both with respect to the frequency of IFN γ -producing cells and the amount of IFN γ /per cell (assessed by the MFI of IFN γ staining). We then tested the role of IL-12, IL-18, and type 1 IFN by testing the ability of blocking antibodies against these cytokines or their receptors to inhibit the action of R848. IL-12 and IL-18 blockade showed a minor effect on R848-induced potentiation of MAIT cell response (**Figures 1B,C**, left panel). In contrast, blocking the common IFN α/β receptor (IFNAR) dramatically inhibited the effect of R848 on IFN γ production in anti-CD3-stimulated CD161^{hi}CD8⁺ T cells, suggesting a major role for type I IFN in this adjuvant effect. To confirm these data, we made use of another TLR agonist, gardiquimod (GDQ). GDQ is a specific TLR7 agonist and potent IFN α inducer. As shown in **Figure 1C** (right panel), GDQ significantly potentiated the CD161^{hi}CD8⁺ T cell response to sOKT3, and this effect was reversed by blocking

the IFNAR. These two pieces of data confirm that type 1 IFN is strongly involved in the potentiation of CD161^{hi}CD8⁺ T cell response upon TLR7 (GDQ) or TLR7+8 (R848) ligation. pDC are the major IFN α -producing cells (on a per cell basis) upon TLR7 activation, but TLR8 agonists may also induce a strong production of IFN β by monocytes or mDC (57). To identify the main cellular source(s) of type 1 IFN in our settings, we performed cell-depletion experiments. Thus, we separately depleted mDC, monocytes, and pDC from the PBMC of 3 individuals and assessed the effect of R848 on CD161^{hi}CD8⁺ T cell response to anti-CD3 stimulation (**Figure 1D**). The depletion of mDC had no impact on CD161^{hi}CD8⁺ T cell response to sOKT3 alone or with R848, suggesting that R848 can mediate its effects in the absence of mDC. Depleting monocytes resulted in a very low response to sOKT3, probably because this accessory cell type is necessary to the stimulatory effect of sOKT3 on T cells in the absence of exogenous co-stimulation. Nevertheless, the addition of R848 increased the CD161^{hi}CD8⁺ T cell response to the same extent as in whole PBMC, compared with OKT3 alone. Finally, depleting pDC completely abolished the adjuvant effect of R848, strongly pointing to this cell type as the main mediator of R848 action on CD161^{hi}CD8⁺ T cells. Altogether, these data show that R848 potentiates CD3-mediated CD161^{hi}CD8⁺ T cell response in a pDC- and type 1 IFN-dependent manner. Since GDQ, a TLR7 agonist, shows similar adjuvant effects on CD161^{hi}CD8⁺ T cells, it seems likely that R848 activates pDC through TLR7 as well in this setting. Therefore, we decided to analyze in depth the co-stimulatory action of type 1 IFN on MAIT cells response, selecting recombinant IFN α 2b as a model type 1 IFN.

IFN α Strongly Potentiates CD161^{hi}CD8⁺ T Cells Effector Functions

The addition of IFN α alone induced CD69 expression on PBMC CD161^{hi}CD8⁺ cells in a dose-dependent manner (**Figure 2A**); however, the production of intracellular IFN γ was minimal (**Figures 2B,C**). In contrast, IFN α very strongly potentiated the production of IFN γ and TNF α , but also of CCL4, by CD161^{hi}CD8⁺ T cells in response to anti-CD3 (**Figures 2B,C**). Type 1 IFN have pleiotropic effects, as most lymphocytes express the IFNAR. Therefore, the observed action of IFN α on CD161^{hi}CD8⁺ T cells could only be representative of its broad action on memory CD8 T cells in general. To test this, we analyzed within the same PBMC the effect of IFN α on CD161^{hi}CD8⁺ T cells and conventional CD8 memory T cells (as defined by the CD5⁺CD8⁺CD45RA⁻CD161⁻ phenotype). This adjuvant effect of IFN α on cytokine production was dramatically higher in CD161^{hi}CD8⁺ T cells than in conventional memory CD8 T cells (**Figure 2D**). Thus, although IFN α acts on conventional memory CD8 T cells, CD161^{hi}CD8⁺ T cells, including MAIT cells, display a higher sensitivity to this cytokine.

As our experiments were performed on whole PBMC, IFN α could act either directly on CD161^{hi}CD8⁺ T cells or indirectly, by inducing in accessory cells other soluble or membrane factors that would co-stimulate this subset. To address this question, we purified MAIT cells (this time using anti-TCRV α 7.2 antibody,

see section “Materials and Methods”) and stimulated them with tetrameric CD2/CD3/CD28 antibodies alone or in the presence of IFN α . As shown in **Figure 2E**, purified MAIT cells responded directly to IFN α co-stimulation, in the absence of accessory cells (data not shown). Similar results were obtained with purified CD8⁺ T cells. We conclude that MAIT cells respond directly to type 1 IFN co-stimulation which synergizes with TCR stimulation for IFN γ production.

Besides cytokine production, MAIT cells display cytotoxic functions; however, resting MAIT cells express low levels of cytolytic molecules and require some level of priming to display their full effector capacities (12, 13). We then asked whether type 1 IFN may prime CD161^{hi}CD8⁺ T cells for cytotoxicity. IFN α alone was able to increase both perforin and granzyme B expression in CD161^{hi}CD8⁺ T cells (**Figures 3A,B**), whereas OKT3 had no effect on these 2 molecules. When looking at the combined effects of these 2 stimuli, the level of perforin expression remained unchanged as it reached the same level than IFN α alone, but there was a very strong potentiation of granzyme B expression. We also tested the capacity of IFN α -co-stimulated CD161^{hi}CD8⁺ T cells to degranulate, as assessed by the surface expression of the endosomal marker CD107a. IFN α alone did not induce CD107a expression, but it dramatically increased its expression upon sOKT3 stimulation (**Figures 3C,D**). Altogether, IFN α very strongly potentiates CD161^{hi}CD8⁺ T cell effector functions, in terms of cytokine production, degranulation, and expression of cytotoxic molecules. It is noteworthy that the effect of IFN α was seen only when it was added before sOKT3, but not at the same time (**Figure 3E**). This suggests that IFN α acts by priming MAIT cells for full response to TCR-dependent stimulation.

We reproduced these data by using a different, more specific stimulus for MAIT cells. We used the *E. coli* supernatant, which contains bioactive MR1 ligands (58). This supernatant is able to induce both intracellular IFN γ production and surface expression of CD107a in PBMC CD161^{hi}CD8⁺ T cells (**Figures 4A,B**), in an MR1-dependent manner (**Figure 4B**). In contrast, the frequency of responding CD161⁻CD8⁺ T cells was very low. It is noteworthy that IFN α pretreatment especially increased the frequency of polyfunctional CD107a⁺/IFN γ ⁺ MAIT cells (**Figures 4A,B**, right panel).

Preferential Use of STAT4 in IFN α -Stimulated MAIT Cells

We then wanted to investigate what appears to be a specific sensitivity of MAIT cells to IFN α . Type 1 IFN have pleiotropic effects on different cell types; moreover, depending on the context, it can even show opposite effects on the same cell types. For example, in CD8 T cells, type 1 IFN can mediate either anti-proliferative effects or promote IFN γ production, akin to IL-12 (59–61). The mechanisms behind these differential effects have been partially unraveled in mice. It was shown in the murine LCMV model that the balanced expression of STAT4 and STAT1 modulates the response of CD8 T cells and NK cells to type 1 IFN. Indeed, although type 1 IFN predominantly uses the STAT1 pathway, leading to anti-proliferative effects, viral infection

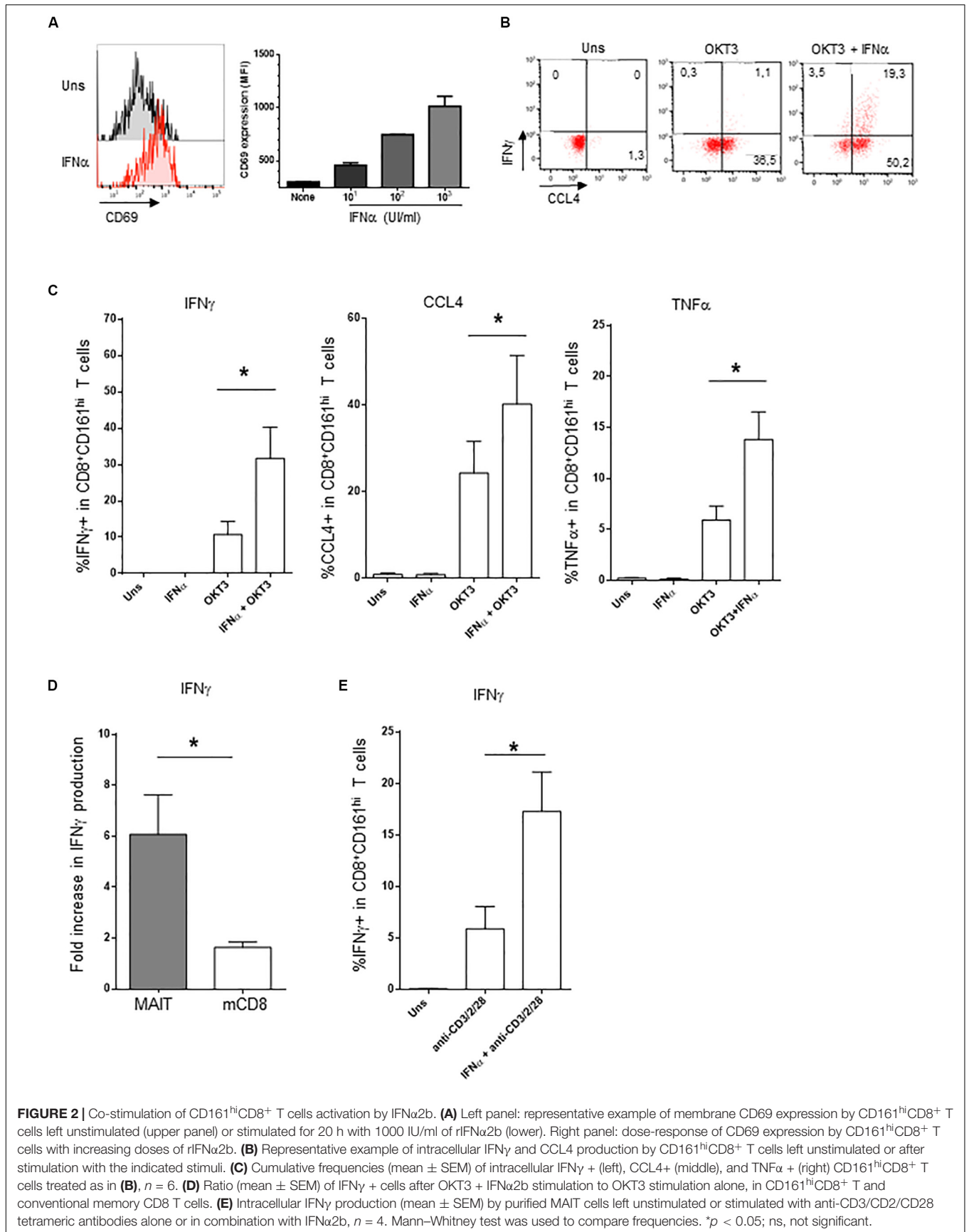


FIGURE 2 | Co-stimulation of CD161^{hi}CD8⁺ T cells activation by IFN α 2b. **(A)** Left panel: representative example of membrane CD69 expression by CD161^{hi}CD8⁺ T cells left unstimulated (upper panel) or stimulated for 20 h with 1000 IU/ml of rIFN α 2b (lower). Right panel: dose-response of CD69 expression by CD161^{hi}CD8⁺ T cells with increasing doses of rIFN α 2b. **(B)** Representative example of intracellular IFN γ and CCL4 production by CD161^{hi}CD8⁺ T cells left unstimulated or after stimulation with the indicated stimuli. **(C)** Cumulative frequencies (mean \pm SEM) of intracellular IFN γ + (left), CCL4+ (middle), and TNF α + (right) CD161^{hi}CD8⁺ T cells treated as in **(B)**, $n = 6$. **(D)** Ratio (mean \pm SEM) of IFN γ + cells after OKT3 + IFN α 2b stimulation to OKT3 stimulation alone, in CD161^{hi}CD8⁺ T and conventional memory CD8 T cells. **(E)** Intracellular IFN γ production (mean \pm SEM) by purified MAIT cells left unstimulated or stimulated with anti-CD3/CD2/CD28 tetrameric antibodies alone or in combination with IFN α 2b, $n = 4$. Mann–Whitney test was used to compare frequencies. * $p < 0.05$; ns, not significant.

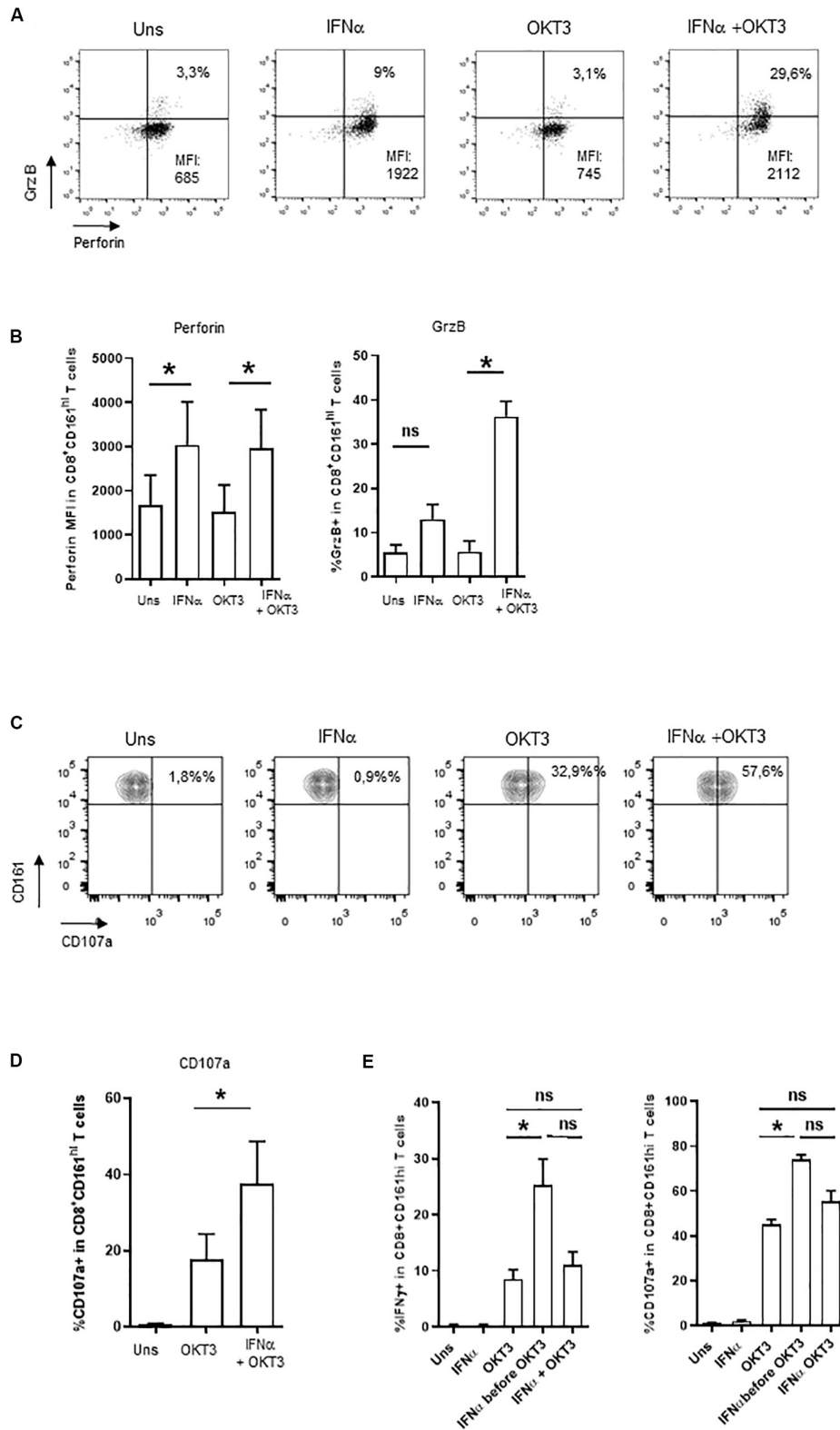


FIGURE 3 | Induction of cytotoxicity in IFN α 2b-co-stimulated CD161^{hi}CD8⁺ T cells. **(A)** Representative example of intracellular perforin and granzyme B expression by CD161^{hi}CD8⁺ T cells left unstimulated or stimulated under the specified conditions. **(B)** Cumulative data (mean \pm SEM) for the mean fluorescence intensities of perforin staining (left panel) and frequencies of granzyme B + (right panel) CD161^{hi}CD8⁺ T cells, stimulated in the indicated conditions. **(C)** Representative example (Continued)

FIGURE 3 | Continued

of CD107a staining by CD161^{hi}CD8⁺ T cells. Dot plots are gated on CD8⁺ T cells. **(D)** Cumulative frequencies (mean \pm SEM) of CD107a⁺CD161^{hi}CD8⁺ T cells after stimulation with OKT3 alone or in combination with IFN α 2b. Mann–Whitney test was used to compare frequencies. $n = 4$, * $p < 0.05$; ns, not significant. **(E)** PBMC were either left unstimulated, or stimulated in different conditions: IFN α or OKT3 for 20 h, IFN α for 3 h before adding OKT3 for the next 17 h, or IFN α and OKT3 for 20 h. Brefeldin A was added 4 h after the beginning of the culture. At the end of the incubation period, PBMC were collected and stained for extracellular and intracellular markers as stated in the section “Materials and Methods.” For CD107a expression, the anti-CD107a mAb was incubated with cells during the whole culture period. Figures show cumulative data ($n = 4$) for IFN γ production (left panel) and CD107a expression (right panel) by CD161^{hi}CD8⁺ T cells under the specified conditions. Statistical comparison was performed with a Friedman test with Dunn’s correction for multiple comparisons. * $p < 0.05$; ns, not significant.

induces predominant STAT4 expression and promotes IFN γ (62). From these data, we hypothesized that the response of MAIT cells to IFN α could be at least partially explained by the differential use of STAT4 and STAT1-mediated pathways downstream of the IFNAR. To test this hypothesis, we first quantified STAT1 and STAT4 gene expression by QRT-PCR in purified MAIT (defined with the anti-TCR V α 7.2 mAb, see section “Materials and Methods”) versus TCRV α 7.2-CD161- memory CD8 T cells. As shown in **Figure 5A**, the STAT4/STAT1 ratio in MAIT cells was >6 fold higher than in TCRV α 7.2-CD161-CD8⁺ T cells, showing that resting MAIT cells chiefly express STAT4 over STAT1. To verify that STAT4 is indeed phosphorylated upon IFN α incubation, we used phosphoflow cytometry to quantify p-STAT4. STAT4 was phosphorylated upon 15 min of incubation with IFN α in both MAIT and conventional memory CD8 T cells (**Figure 5B**); however, the MFI of pSTAT4 expression was significantly greater in the former than in the latter (**Figure 5C**). Finally, we checked the nuclear translocation of p-STAT4 in MAIT cells by use of imaging flow cytometry. Resting, inactivated MAIT cells (defined as CD161⁺CD8⁺ cells) expressed no p-STAT4; upon 15 min of incubation with IFN α , we could detect a significant expression of pSTAT4, which entirely co-localized with DAPI in the nucleus of MAIT cells (**Figure 5D**). We conclude from all this set of experiments that resting MAIT cells express an elevated level of STAT4, which is preferentially phosphorylated and translocated in the nucleus upon IFN α incubation, compared to conventional memory CD8 T cells.

IFN α Elicits a Specific Transcriptional Program in MAIT Cells

Our data strongly suggest that IFN α selectively acts on MAIT cells to dramatically increase their responsiveness to TCR-dependent activation. To more formally address this hypothesis, we performed a microarray analysis of gene expression regulated by IFN α in MAIT versus conventional memory CD8 T cells. Of note, the isolation procedure excluded TCRV α 7.2-CD161- cells from this latter subset. MAIT and conventional memory CD8 T cells were purified from the blood of 4 healthy donors, and whole-genome microarrays were performed on resting and IFN α -stimulated samples. We deliberately chose an early time-point (90 min after stimulation) to investigate the immediate effect of type 1 IFN on gene expression. PCA analysis of the 4 types of samples confirmed that resting MAIT cells express a specific set of genes (**Figure 6A**). We first looked at the expression of genes that have been previously described as MAIT-enriched. Indeed, we found a high expression (compared to conventional memory CD8) of *KLRB1* (encoding CD161), *ZBTB16* (encoding

PLZF), *CCR6*, *RORC*, *IL-23R*, *CXCR6*, *DPP4* (encoding CD26), and *IL18R1* (**Figure 6B**). These data confirmed the quality of our protocol and encouraged us to analyze further comparisons. A total of 610 and 928 genes were found to be significantly regulated by IFN α in conventional memory CD8 and MAIT cells, respectively (**Figure 6C**). Interestingly, 464 genes were found in common between both cell types, including multiple interferon-specific genes (ISG) as expected (**Supplementary Table S1**). Half (464) of the genes regulated in MAIT were specific and not found in conventional memory T cells. We took a closer look and found that IFN α downregulated 189 genes in conventional CD8 and 430 genes in MAIT, 70% of the latter being specific (**Figure 6C**, right panel, middle). In contrast, IFN α upregulated 421 genes in conventional CD8 and 498 genes in MAIT cells, with only 33% of the latter being specific to this subset (**Figure 6C**, left panel). In other words, IFN α down- and upregulates approximately the same number of genes in MAIT cells, whereas more genes are upregulated than downregulated in conventional CD8 T cells. Interestingly, *furin*, encoding a proprotein convertase shown to be involved in IFN γ production (63), showed an increased transcription in treated MAIT cells only, providing a possible mechanism for the selective action of type 1 IFN. We then used the Ingenuity Pathway Analysis software to analyze canonical pathways regulated by IFN α in MAIT cells. As expected, we obtained very low p -values for pathways directly associated with IFN signaling, interferon-regulatory factors, or pattern-recognition receptors (**Figure 6D**). Interestingly, we also detected modules associated with cytotoxic lymphocytes and natural killer cell signaling. We next analyzed side-by-side the disease and function pathways regulated by IFN α in conventional CD8m and MAIT cells. This revealed common and specific pathways for both subsets. Interestingly, MAIT cells specifically upregulated pathways associated with cytotoxicity of lymphocytes, and T cell response, compared with conventional CD8m T cells (**Figure 6E**). Altogether, these experiments confirm that the MAIT cell response to IFN α partially induces a specific set of genes, not found in conventional memory CD8 T cells, and therefore that MAIT cells display a specific responsiveness to this cytokine.

DISCUSSION

How pathogen-derived signals activate protective antimicrobial functions in MAIT cells remains incompletely solved. We provide here strong evidences that IFN α 2b (and most likely other type 1 IFN) are important actors in this process, confirming a very recent report (64). We also provide compelling evidences that

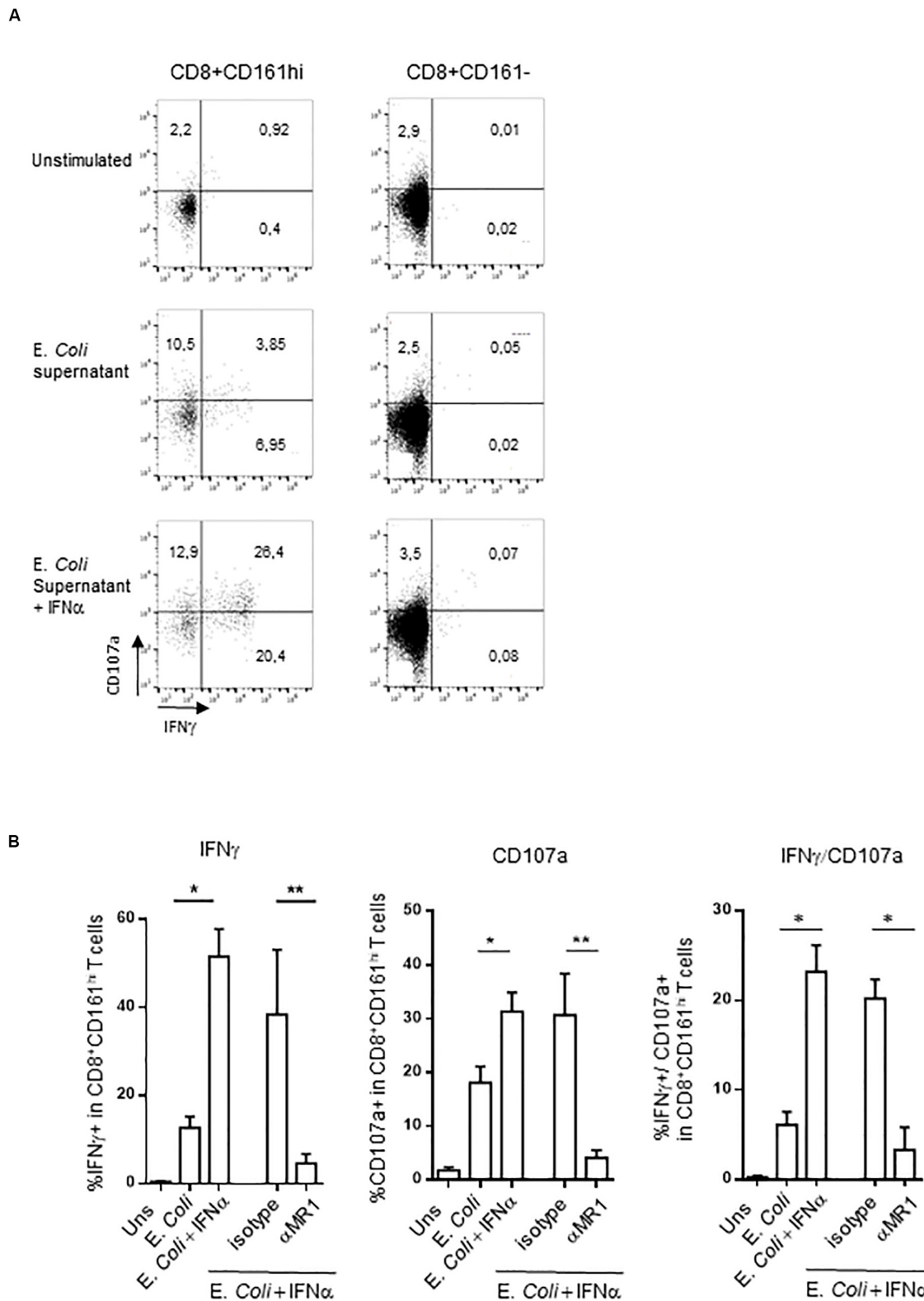
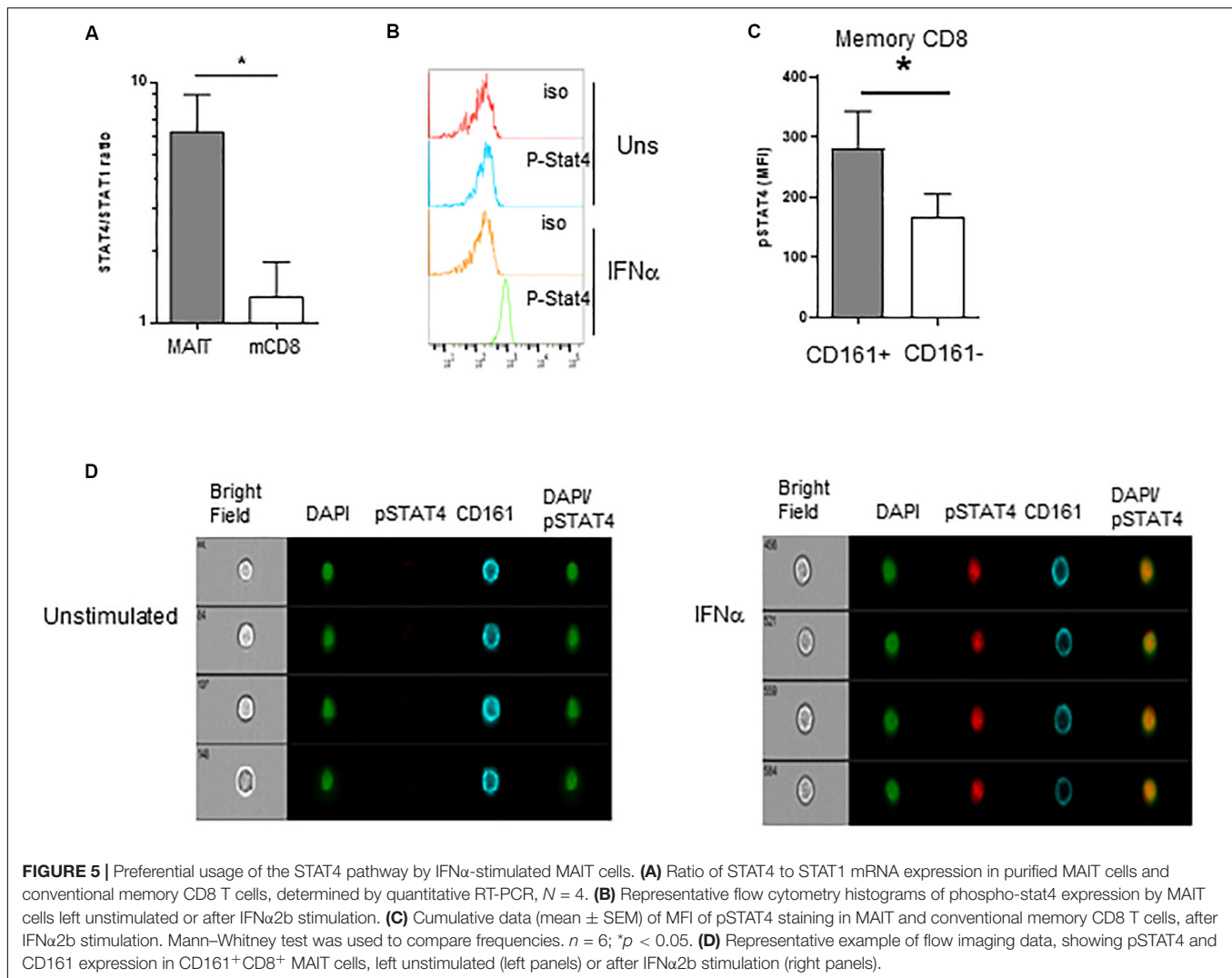


FIGURE 4 | (A) Representative flow cytometry dot plots showing membrane CD107a and intracellular IFN γ expression by CD161^{hi}CD8⁺ T cells (left) or conventional CD8 T cells (right) left unstimulated, or after stimulation with *E. coli* supernatant alone or in combination with IFN α 2b. **(B)** Cumulative frequencies (mean \pm SEM) of IFN γ ⁺ (upper) and CD107a⁺ (lower panel) CD161^{hi}CD8⁺ T cells stimulated under the indicated conditions, *N* = 5. Mann–Whitney test was used to compare frequencies. ***p* < 0.01, **p* < 0.05; ns, not significant.



IFN α induce a specific signaling and transcriptional program in MAIT cells, which could be harnessed for future intervention.

Type 1 IFN have broad actions on the immune system, and one could argue that their stimulatory effects on MAIT cells only reflect their general action on CD8 T cells. However, this is actually not the case (65). In *in vivo* murine models, IFN α mostly stimulates naïve CD8 T cells and fosters their differentiation into memory cells (66, 67). On the contrary, its effect on memory CD8 T cells is mostly anti-proliferative. Similarly, IFN α promotes memory differentiation from human naïve CD8 T cells *in vitro* (68) and only modestly increases cytokine production by CD8m T cells (69). In contrast, we showed that MAIT cells responded promptly to IFN α incubation by directly upregulating cytotoxic molecules and dramatically increasing cytokine response to TCR triggering. Although we did not directly address mechanistic issues, we provided circumstantial evidences that a preferential usage of the Stat4 pathways by the IFNAR signaling is occurring in MAIT cells. It is well known that besides the canonical Stat1/Stat2 pathway, IFNAR signaling may involve any other Stats, depending on the cell

type and probably other factors. Seminal work from the Biron laboratory has shown in the murine LCMV infection model that Stat4 is required for innate IFN γ production by natural killer cells but also that viral infection induces a switch in CD8 + T cells from a Stat1-dependent, anti-proliferative effect to a Stat4-dependent, IFN γ production in response to IFN α (62, 70, 71). Our data suggest that mature MAIT cells are equipped with a Stat4-dependent signaling module that drives their response to IFN α . If so, it remains to be determined when, how, and where this specific signaling pathway is plugged into the IFNAR receptor in MAIT cells. Thus, it is possible that thymic positive selection drives this process, perhaps upon PLZF expression, implying that MAIT cells would be developmentally programmed to provide this kind of response. Interestingly, type 1 IFN drives the development of innate-like CD8 T cells in mice (72). More studies are needed to address this question.

We found that IFN α has a potent effect when pre-incubated with PBMC before OKT3 stimulation. This is at odds with the report from Lamichhane et al. (64), where simultaneous

treatment with IFN α and 5-A-RU/MG (a potent MAIT cell-stimulating ligand) showed a synergistic effect. The reason for this discrepancy is not clear but may involve the different setup between our two studies. Indeed, the use of 1 nM of 5-A-RU/MG is known to strongly activate MAIT cells through

MR1 presentation by APC, whereas we deliberately chose to use a low dose of soluble OKT3. Our gene expression analysis confirmed that IFN α induces a partially specific transcriptional program, in line with MAIT cells' specific sensitivity to IFN α . We chose a timeframe of 90 min to minimize positive and

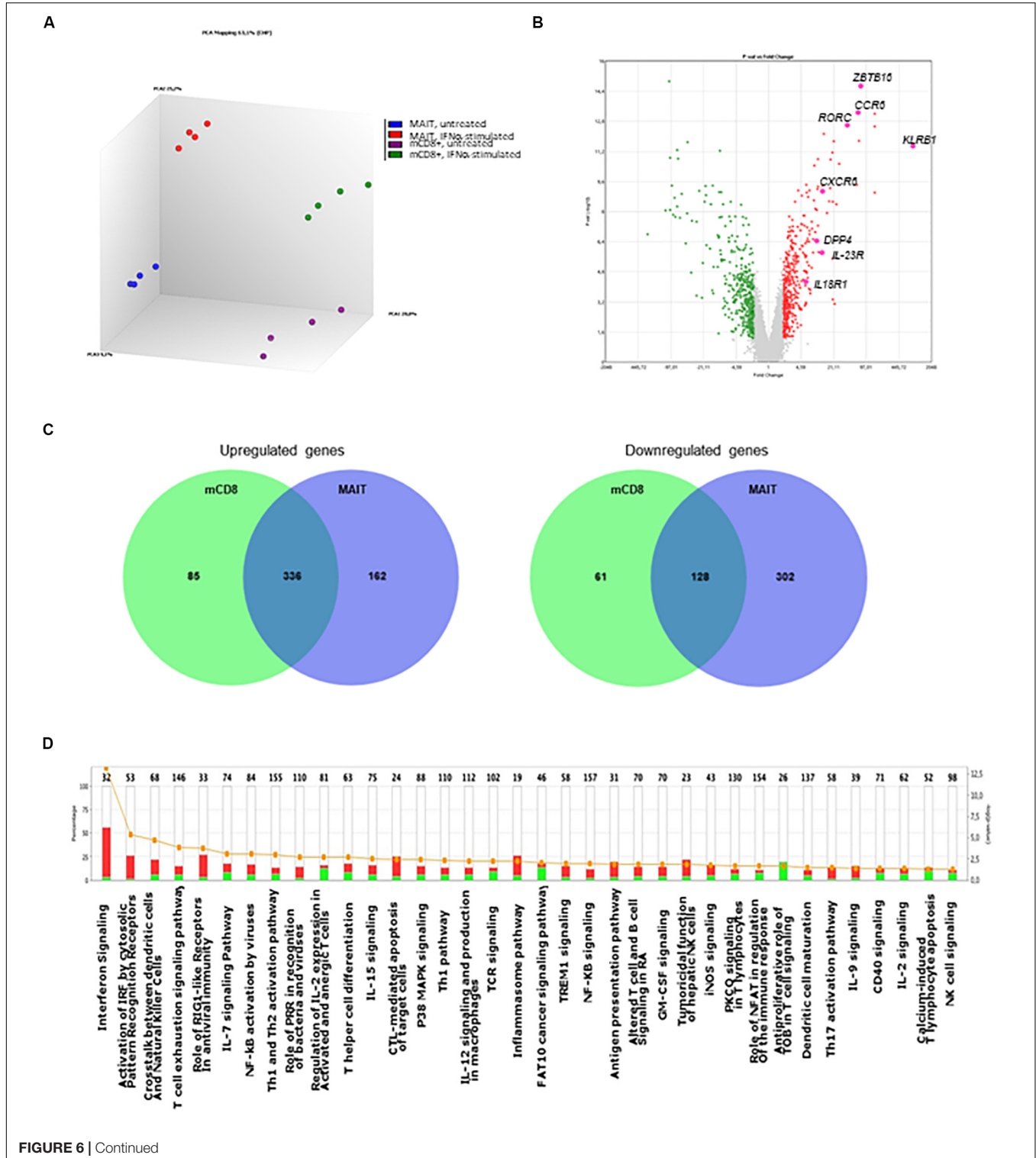


FIGURE 6 | Continued

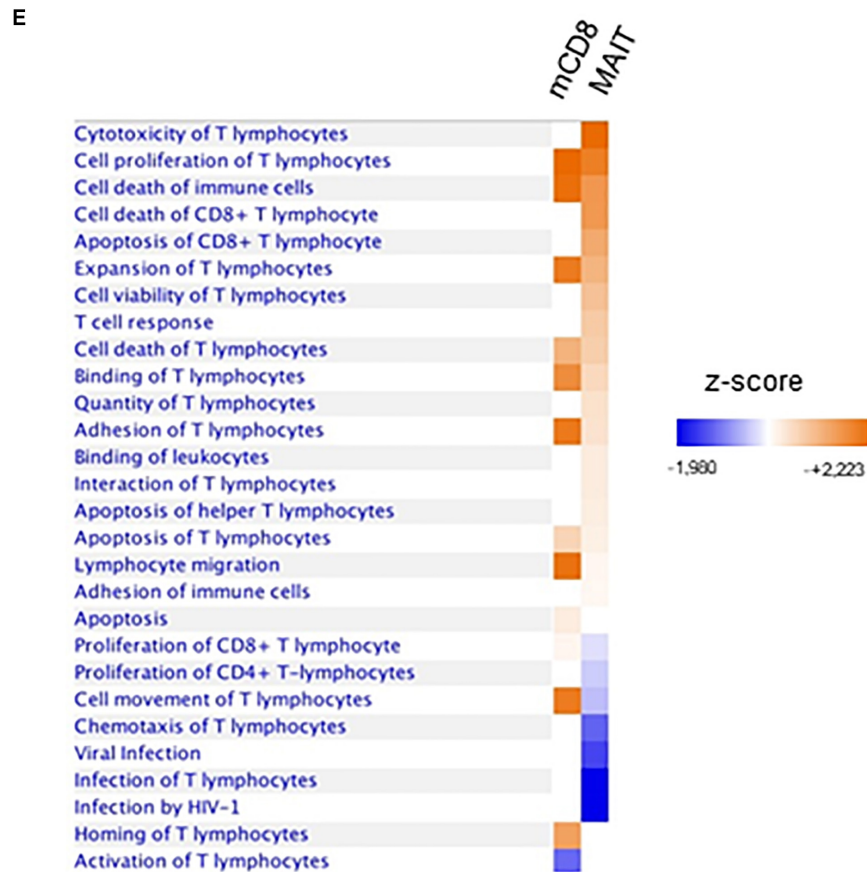


FIGURE 6 | IFN α 2b induces a specific set of genes in MAIT cells. **(A)** Principal component analysis of gene expression by untreated MAIT cells (blue), IFN α -stimulated MAIT cells (red), conventional memory CD8⁺CD161⁻ T cells (purple), and IFN α -stimulated conventional memory CD8⁺CD161⁻ T cells (green). Analysis was performed with the Transcriptome Analysis Console (TAC, version 4.0) software. **(B)** Volcano plot of differentially expressed genes (DEG) between MAIT and conventional memory CD8 T cells. Colored dots represent genes with at least a 2-fold difference. The main MAIT-associated genes are labeled. **(C)** Venn diagrams of the number of DEG induced by IFN α 2b stimulation in conventional CD8 memory and MAIT cells. **(D)** Pathway analysis of the genes differentially expressed in IFN α 2b-stimulated versus unstimulated MAIT cells. The left axis represents the % of genes within each pathway, and the right axis shows the $-\log(p\text{-value})$. Red bars represent upregulated, and green bars downregulated genes. Orange dots and line show the $-\log(p\text{-value})$ for each pathway. **(E)** Comparison of the main pathways regulated by IFN α 2b stimulation in conventional memory CD8 versus MAIT cells. Four different donors were analyzed in these experiments. Pathway analyses were performed with the Ingenuity Pathway Analysis software.

negative feedback loops that may occur in response to IFN; further, it is close to the peak of the IFN response as shown recently in human and mouse cells (73). We made the surprising finding that IFN α downregulates many more genes in MAIT cells than in conventional mCD8 T cells; indeed, it has been shown recently that in most leucocytes, more genes are upregulated than downregulated in response to IFN α signaling (73). Among these downregulated genes, we found genes involved in the regulation of TCR and NF- κ B signaling (**Supplementary Table S1**). These data will require experimental validation. However, we speculate that the hypo-responsiveness of MAIT cells might be the consequence of the wiring of negative regulators of TCR signaling, which would then be downregulated by IFN α (and possible other signals), allowing full responsiveness to antigenic stimulation. If so, it will also raise the issue of the developmental regulation of this hypo-responsive phenotype in MAIT cells, from the thymus to the periphery.

Although the STAT4 pathway did not come out as strongly induced in MAIT cells in the microarray analysis, we found a selective induction of transcripts for *furin* in MAIT cells only. Furin is a ubiquitously expressed proprotein convertase with many substrates, involved in various biological processes. Interestingly, furin is induced by IL-12 in a STAT4-dependent manner and preferentially expressed in human Th1 cells (63). Another publication confirmed that *furin* is a target of STAT4 binding in Th1 cells (74). The absence of *furin* leads to a decreased production of IFN γ in Th1 cells, suggesting an IFN γ -enhancing role for this protease (63). It is therefore possible that furin expression is upregulated by IFN α in a STAT4-dependent manner in MAIT cells and could be important for the enhanced IFN γ production. Future studies will address this possibility.

Our work focused on CD8⁺ MAIT cells, which represent the majority of MR1-restricted T cells. The reason behind this strategy was our goal to select a homogeneous population to

compare with their mainstream counterparts, i.e., conventional CD161⁻ memory CD161^{hi}CD8⁺ T cells. However, this excluded CD8⁻ MAIT cells, composed of a very small fraction of CD4⁺ and a significant population of CD4⁻CD8⁻ (DN) MAIT cells (7). Furthermore, DN and CD8⁺ MAIT cells are developmentally related but display distinct transcriptional and functional profiles, with the CD8⁺ subset expressing elevated levels of NK-related markers (NKG2A, NKG2D, and others), cytotoxic molecules (GrzB), and type 1 cytokines (IFN γ , TNF α), compared to DN MAIT cells (75). Thus, it is possible that DN MAIT cells behave differently than their CD8⁺ counterparts with respect to their response to IFN α . Future studies will undoubtedly address this question.

We must stress that comparisons between MAIT cells and conventional memory CD8⁺ T cells involved slightly different definitions of this latter subset, including total CD8⁺CD161⁻ (functional studies), CD8⁺TCRV α 7.2⁺CD161⁻ (QRT-PCT experiments) or CD8⁺TCRV α 7.2⁻CD161⁻ (microarray analysis). Published data showed several differences between TCRV α 7.2⁺ and TCRV α 7.2⁻ cells within the CD8⁺CD161⁻ subset, although this analysis was performed without selecting specifically for memory cells (76). Nevertheless, it is conceivable that some of these comparisons between MAIT cells and conventional CD8⁺ cells are biased because of subset definitions. On the other hand, the TCRV α 7.2⁻ represent a very minor subset of CD161⁻CD8⁺ T cells, which should not behave so much differently than other CD161⁻ cells. Although this represents an objective limitation, we believe this does not impede conclusions drawn from our experiments.

Previous work has already shown how inflammatory signals derived from TLR-stimulated APC synergize with TCR signaling to induce full effector functions in MAIT cells. Monocytes have been the main focus of these studies and are shown to be strong MAIT cells stimulators upon TLR8 or TLR4 stimulation (77). Of note, the specific soluble factors produced by monocytes and responsible for MAIT cells co-stimulation were not identified (39). In mice, *in vivo* activation of MAIT cells was observed only when TLR agonists (of TLR2, TLR3, or TLR9) were co-administered with the purified MR1 ligand 5-OP-RU. The specific APC(s) and cytokines involved in this effect were not investigated (37). We show here that pDC can be the source of a strong MAIT cell co-stimulation, at least upon TLR7 stimulation. pDC express MR1 transcripts and could be potent APC for MAIT cells. It remains to be investigated whether pDC are mostly (or solely) cytokine producers in this setting or are also able to potently present MR1 ligands to MAIT cells.

With regard to the prospect of harnessing MAIT cells' functions in a therapeutic or prophylactic manner, a number of reports have demonstrated the importance of inflammatory cytokines in MAIT cell co-stimulation. Several authors have shown the potency of the IL-12 + IL-18 combination, where the role of IL-12 is probably to increase IL-18 responsiveness; on the other hand, IL-7 is also a potent MAIT cell co-stimulator but mostly for cytotoxicity more than for IFN γ production. Recent reports have provided insights into the effects of cytokine stimulation on MAIT cells at the transcriptional

and functional levels, mostly focusing on IL-12 + IL-18 (41, 42, 44). These cytokines, along with others such as IL-15 and TLR1-A, strongly synergize with TCR stimulation to induce full antimicrobial effector functions, including IFN γ production and cytotoxicity, akin to our observations with IFN α . In one paper, IL-12 + IL-18 stimulation alone was sufficient to induce the expression of IFN γ and cytotoxic effectors at the mRNA and protein levels. Further, most DEGs were upregulated in these studies, whereas we found a lot of downregulated genes in response to IFN α stimulation. It must be noted that these responses were described as slow, and analyzed at late time points (after 24 h of stimulation), suggesting that it could involve feed-forward loops that we tried to avoid in our study of the immediate response to IFN α . As we and others did not compare all these cytokines in their ability to influence MAIT cell activation, it would be of great interest to analyze the transcriptional response of MAIT cells to these stimuli, as a way to stratify their interest in the context of immune intervention but also to analyze in deeper molecular details the response of MAIT cells.

Besides these important issues, our work raises hypotheses and possibilities. For instance, it is well known that viral infections are strong inducers of type 1 IFN. A recent report very elegantly showed that a localized antiviral vaccination induces an IFN response that rapidly spreads to the entire organism, endowing distant cells from prophylactic antiviral mechanisms (78). It is tempting to suggest that this wave of IFN signaling would also provide a priming signal to circulating MAIT cells, which would then be ready for response. Viral infections often dampen inflammatory neutrophilic response, with increased susceptibility to bacterial infections. Priming this specific, highly potent antibacterial subset of T cells would make high evolutionary sense to avoid major damages due to secondary infections. More generally, the type 1 IFN response in antibacterial and fungal immunity is often assumed to be detrimental (79), but this is still debated. Our data emphasize, at least from a MAIT-centered perspective, that IFN α can be beneficial for antibacterial mechanisms and may foster new endeavors to analyze the therapeutic and prophylactic consequences.

DATA AVAILABILITY STATEMENT

The raw data supporting the conclusions of this article will be made available by the authors, without undue reservation, to any qualified researcher.

ETHICS STATEMENT

Ethical review and approval was not required for the study on human participants in accordance with the Local Legislation and Institutional Requirements. Written informed consent for participation was

not required for this study in accordance with the National Legislation and the Institutional Requirements.

AUTHOR CONTRIBUTIONS

MP, CG, and CC performed the experiments and analyzed the data. TS helped with preparation of *E. coli*. ET designed the study, analyzed the data, and wrote the manuscript. All authors contributed to the article and approved the submitted version.

FUNDING

This study was funded by grants from the ANRS (National Agency for HIV Research) and the Association François Aupetit.

REFERENCES

- Dusseaux M, Martin E, Serriari N, Peguillet I, Premel V, Louis D, et al. Human MAIT cells are xenobiotic-resistant, tissue-targeted, CD161hi IL-17-secreting T cells. *Blood*. (2011) 117:1250–9. doi: 10.1182/blood-2010-08-303339
- Gherardin NA, Souter MN, Koay HF, Mangas KM, Seemann T, Stinear TP, et al. Human blood MAIT cell subsets defined using MR1 tetramers. *Immunol Cell Biol*. (2018) 96:507–25. doi: 10.1111/imcb.12021
- Tilloy F, Treiner E, Park SH, Garcia C, Lemonnier F, de la Salle H, et al. An invariant T cell receptor alpha chain defines a novel TAP-independent major histocompatibility complex class Ib-restricted alpha/beta T cell subpopulation in mammals. *J Exp Med*. (1999) 189:1907–21. doi: 10.1084/jem.189.12.1907
- Gold MC, Cerri S, Smyk-Pearson S, Cansler ME, Vogt TM, Delepine J, et al. Human mucosal associated invariant T cells detect bacterially infected cells. *PLoS Biol*. (2010) 8:e1000407. doi: 10.1371/journal.pbio.1000407
- Le Bourhis L, Martin E, Peguillet I, Guihot A, Froux N, Core M, et al. Antimicrobial activity of mucosal-associated invariant T cells. *Nat Immunol*. (2010) 11:701–8.
- Lopez-Sagaseta J, Dulberger CL, Crooks JE, Parks CD, Luoma AM, McFedries A, et al. The molecular basis for mucosal-associated invariant T cell recognition of MR1 proteins. *Proc Natl Acad Sci USA*. (2013) 110:E1771–8.
- R, Corbett AJ, Sakala IG, Gherardin NA, Furness JB, Chen Z, et al. Antigen-loaded MR1 tetramers define T cell receptor heterogeneity in mucosal-associated invariant T cells. *J Exp Med*. (2013) 210:2305–20. doi: 10.1084/jem.20130958
- Patel O, Kjer-Nielsen L, Le Nours J, Eckle SB, Birkinshaw R, Beddoe T, et al. Recognition of vitamin B metabolites by mucosal-associated invariant T cells. *Nat Commun*. (2013) 4:2142.
- Corbett AJ, Eckle SB, Birkinshaw RW, Liu L, Patel O, Mahony J, et al. T-cell activation by transitory neo-antigens derived from distinct microbial pathways. *Nature*. (2014) 509:361–5. doi: 10.1038/nature13160
- Eckle SB, Corbett AJ, Keller AN, Chen Z, Godfrey DI, Liu L, et al. Recognition of vitamin B precursors and byproducts by mucosal associated invariant T cells. *J Biol Chem*. (2015) 290:30204–11. doi: 10.1074/jbc.r115.685990
- Napier RJ, Adams EJ, Gold MC, Lewinsohn DM. The role of mucosal associated invariant T Cells in antimicrobial immunity. *Front Immunol*. (2015) 6:344. doi: 10.3389/fimmu.2015.00344
- Kurioka A, Ussher JE, Cosgrove C, Clough C, Fergusson JR, Smith K, et al. MAIT cells are licensed through granzyme exchange to kill bacterially sensitized targets. *Mucosal Immunol*. (2015) 8:429–40. doi: 10.1038/mi.2014.81
- Le Bourhis L, Dusseaux M, Bohineust A, Bessoles S, Martin E, Premel V, et al. MAIT cells detect and efficiently lyse bacterially-infected epithelial cells. *PLoS Pathog*. (2013) 9:e1003681. doi: 10.1371/journal.ppat.1003681

ACKNOWLEDGMENTS

We thank Anne-Laure Iscache, Valérie Duplan, and Fatima-Ezzahra L'Faqihi for technical assistance at the flow cytometry core facility of INSERM UMR 1043, Toulouse, and Leila Khajavi for help with the IPA analysis. We also thank the platform GET-Biopuces at the Genopole in Toulouse for the microarrays Affymetrix experiments and the associated statistical analysis.

SUPPLEMENTARY MATERIAL

The Supplementary Material for this article can be found online at: <https://www.frontiersin.org/articles/10.3389/fimmu.2020.02097/full#supplementary-material>

- Lepore M, Kalinichenko A, Colone A, Paleja B, Singhal A, Tschumi A, et al. Parallel T-cell cloning and deep sequencing of human MAIT cells reveal stable oligoclonal TCRbeta repertoire. *Nat Commun*. (2014) 5:3866.
- Leeansyah E, Svard J, Dias J, Buggert M, Nystrom J, Quigley ME, et al. Arming of MAIT cell cytolytic antimicrobial activity is induced by IL-7 and defective in HIV-1 infection. *PLoS Pathog*. (2015) 11:e1005072. doi: 10.1371/journal.ppat.1005072
- Bennett MS, Trivedi S, Iyer AS, Hale JS, Leung DT. Human mucosal-associated invariant T (MAIT) cells possess capacity for B cell help. *J Leukoc Biol*. (2017) 102:1261–9.
- Davey MS, Morgan MP, Liuzzi AR, Tyler CJ, Khan MWA, Szakmany T, et al. Microbe-specific unconventional T cells induce human neutrophil differentiation into antigen cross-presenting cells. *J Immunol*. (2014) 193:3704–16. doi: 10.4049/jimmunol.1401018
- Salio M, Gasser O, Gonzalez-Lopez C, Martens A, Veerapen N, Gileadi U, et al. Activation of human mucosal-associated invariant T Cells induces CD40L-dependent maturation of monocyte-derived and primary dendritic cells. *J Immunol*. (2017) 199:2631–8. doi: 10.4049/jimmunol.1700615
- Gutierrez-Arcelus M, Teslovich N, Mola AR, Polidoro RB, Nathan A, Kim H, et al. Lymphocyte innateness defined by transcriptional states reflects a balance between proliferation and effector functions. *Nat Commun*. (2019) 10:687.
- Treiner E, Duban L, Bahram S, Radosavljevic M, Wanner V, Tilloy F, et al. Selection of evolutionarily conserved mucosal-associated invariant T cells by MR1. *Nature*. (2003) 422:164–9. doi: 10.1038/nature01433
- Martin E, Treiner E, Duban L, Guerri L, Laude H, Toly C, et al. Stepwise development of MAIT cells in mouse and human. *PLoS Biol*. (2009) 7:e54. doi: 10.1371/journal.pbio.1000054
- Savage AK, Constantinides MG, Han J, Picard D, Martin E, Li B, et al. The transcription factor PLZF directs the effector program of the NKT cell lineage. *Immunity*. (2008) 29:391–403. doi: 10.1016/j.immuni.2008.07.011
- Seach N, Guerri L, Le Bourhis L, Mburu Y, Cui Y, Bessoles S, et al. Double-positive thymocytes select mucosal-associated invariant T cells. *J Immunol*. (2013) 191:6002–9. doi: 10.4049/jimmunol.1301212
- Koay HF, Gherardin NA, Enders A, Loh L, Mackay LK, Almeida CF, et al. A three-stage intrathymic development pathway for the mucosal-associated invariant T cell lineage. *Nat Immunol*. (2016) 17:1300–11. doi: 10.1038/ni.3565
- Salou M, Legoux F, Gilet J, Darbois A, du Halgouet A, Alonso R, et al. A common transcriptomic program acquired in the thymus defines tissue residency of MAIT and NKT subsets. *J Exp Med*. (2019) 216:133–51. doi: 10.1084/jem.20181483
- Legoux F, Gilet J, Procopio E, Echasserieu K, Bernardeau K, Lantz O. Molecular mechanisms of lineage decisions in metabolite-specific T cells. *Nat Immunol*. (2019) 20:1244–55. doi: 10.1038/s41590-019-0465-3

27. Ben Youssef G, Tourret M, Salou M, Ghazarian L, Houdouin V, Mondot S, et al. Ontogeny of human mucosal-associated invariant T cells and related T cell subsets. *J Exp Med.* (2018) 215:459–79. doi: 10.1084/jem.20171739
28. Lantz O, Legoux F. MAIT cells: programmed in the thymus to mediate immunity within tissues. *Curr Opin Immunol.* (2019) 58:75–82. doi: 10.1016/j.coi.2019.04.016
29. Gold MC, Eid T, Smyk-Pearson S, Eberling Y, Swarbrick GM, Langley SM, et al. Human thymic MR1-restricted MAIT cells are innate pathogen-reactive effectors that adapt following thymic egress. *Mucosal Immunol.* (2013) 6:35–44. doi: 10.1038/mi.2012.45
30. Grimaldi D, Le Bourhis L, Sauneuf B, Dechartres A, Rousseau C, Ouaz F, et al. Specific MAIT cell behaviour among innate-like T lymphocytes in critically ill patients with severe infections. *Intensive Care Med.* (2014) 40:192–201. doi: 10.1007/s00134-013-3163-x
31. Leung DT, Bhuiyan TR, Nishat NS, Hoq MR, Aktar A, Rahman MA, et al. Circulating mucosal associated invariant T cells are activated in *Vibrio cholerae* O1 infection and associated with lipopolysaccharide antibody responses. *PLoS Negl Trop Dis.* (2014) 8:e3076. doi: 10.1371/journal.pntd.0003076
32. Smith DJ, Hill GR, Bell SC, Reid DW. Reduced mucosal associated invariant T-cells are associated with increased disease severity and *Pseudomonas aeruginosa* infection in cystic fibrosis. *PLoS One.* (2014) 9:e109891. doi: 10.1371/journal.pone.0109891
33. Salerno-Goncalves R, Luo D, Fresnay S, Magder L, Darton TC, Jones C, et al. Challenge of humans with wild-type *Salmonella enterica* serovar typhi elicits changes in the activation and homing characteristics of mucosal-associated invariant T cells. *Front Immunol.* (2017) 8:398. doi: 10.3389/fimmu.2017.00398
34. Pincikova T, Paquin-Proulx D, Moll M, Flodstrom-Tullberg M, Hjelte L, Sandberg JK. Severely impaired control of bacterial infections in a patient with cystic fibrosis defective in mucosal-associated invariant T cells. *Chest.* (2018) 153:e93–6. doi: 10.1016/j.chest.2018.01.020
35. Wong EB, Gold MC, Meermeier EW, Xulu BZ, Khuzwayo S, Sullivan ZA, et al. TRAV1-2(+) CD8(+) T-cells including oligoclonal expansions of MAIT cells are enriched in the airways in human tuberculosis. *Commun Biol.* (2019) 2:203.
36. Joosten SA, Ottenhoff THM, Lewinsohn DM, Hoft DF, Moody DB, Seshadri C, et al. Harnessing donor unrestricted T-cells for new vaccines against tuberculosis. *Vaccine.* (2019) 37:3022–30. doi: 10.1016/j.vaccine.2019.04.050
37. Chen Z, Wang H, D'Souza C, Sun S, Kostenko L, Eckle SB, et al. Mucosal-associated invariant T-cell activation and accumulation after in vivo infection depends on microbial riboflavin synthesis and co-stimulatory signals. *Mucosal Immunol.* (2017) 10:58–68. doi: 10.1038/mi.2016.39
38. Turtle CJ, Delrow J, Joslyn RC, Swanson HM, Basom R, Tabellini L, et al. Innate signals overcome acquired TCR signaling pathway regulation and govern the fate of human CD161(hi) CD8 α (+) semi-invariant T cells. *Blood.* (2011) 118:2752–62. doi: 10.1182/blood-2011-02-334698
39. Slichter CK, McDavid A, Miller HW, Finak G, Seymour BJ, McNeven JP, et al. Distinct activation thresholds of human conventional and innate-like memory T cells. *JCI Insight.* (2016) 1:e86292.
40. Zinser ME, Highton AJ, Kurioka A, Kronsteiner B, Hagel J, Leng T, et al. Human MAIT cells show metabolic quiescence with rapid glucose-dependent upregulation of granzyme B upon stimulation. *Immunol Cell Biol.* (2018) 96:666–74. doi: 10.1111/imcb.12020
41. Lamichhane R, Schneider M, de la Harpe SM, Harrop TWR, Hannaway RE, Dearden PK, et al. TCR- or cytokine-activated CD8(+) mucosal-associated invariant T cells are rapid polyfunctional effectors that can coordinate immune responses. *Cell Rep.* (2019) 28:3061–76.e5.
42. Hinks TSC, Marchi E, Jabeen M, Olshansky M, Kurioka A, Pediongco TJ, et al. Activation and in vivo evolution of the MAIT cell transcriptome in mice and humans reveals tissue repair functionality. *Cell Rep.* (2019) 28:3249–62.e5.
43. Jo J, Tan AT, Ussher JE, Sandalova E, Tang XZ, Tan-Garcia A, et al. Toll-like receptor 8 agonist and bacteria trigger potent activation of innate immune cells in human liver. *PLoS Pathog.* (2014) 10:e1004210. doi: 10.1371/journal.ppat.1004210
44. Leng T, Akther HD, Hackstein CP, Powell K, King T, Friedrich M, et al. TCR and inflammatory signals tune human MAIT cells to exert specific tissue repair and effector functions. *Cell Rep.* (2019) 28:3077–91.e5.
45. Sattler A, Dang-Heine C, Reinke P, Babel N. IL-15 dependent induction of IL-18 secretion as a feedback mechanism controlling human MAIT-cell effector functions. *Eur J Immunol.* (2015) 45:2286–98. doi: 10.1002/eji.201445313
46. Gracey E, Qaiyum Z, Almaghouth I, Lawson D, Karki S, Avvaru N, et al. IL-7 primes IL-17 in mucosal-associated invariant T (MAIT) cells, which contribute to the Th17-axis in ankylosing spondylitis. *Ann Rheum Dis.* (2016) 75:2124–32. doi: 10.1136/annrheumdis-2015-208902
47. Wallington JC, Williams AP, Staples KJ, Wilkinson TMA. IL-12 and IL-7 synergize to control mucosal-associated invariant T-cell cytotoxic responses to bacterial infection. *J Allergy Clin Immunol.* (2018) 141:2182–95.e6.
48. Schmalzer M, Colone A, Spagnuolo J, Zimmermann M, Lepore M, Kalinichenko A, et al. Modulation of bacterial metabolism by the microenvironment controls MAIT cell stimulation. *Mucosal Immunol.* (2018) 11:1060–70. doi: 10.1038/s41385-018-0020-9
49. Tastan C, Karhan E, Zhou W, Fleming E, Voigt AY, Yao X, et al. Tuning of human MAIT cell activation by commensal bacteria species and MR1-dependent T-cell presentation. *Mucosal Immunol.* (2018) 11:1591–605. doi: 10.1038/s41385-018-0072-x
50. Berkson JD, Prlc M. The MAIT conundrum—how human MAIT cells distinguish bacterial colonization from infection in mucosal barrier tissues. *Immunol Lett.* (2017) 192:7–11. doi: 10.1016/j.imlet.2017.09.013
51. Jurk M, Heil F, Vollmer J, Schetter C, Krieg AM, Wagner H, et al. Human TLR7 or TLR8 independently confer responsiveness to the antiviral compound R-848. *Nat Immunol.* (2002) 3:499. doi: 10.1038/ni0602-499
52. Gibson SJ, Lindh JM, Riter TR, Gleason RM, Rogers LM, Fuller AE, et al. Plasmacytoid dendritic cells produce cytokines and mature in response to the TLR7 agonists, imiquimod and resiquimod. *Cell Immunol.* (2002) 218:74–86. doi: 10.1016/s0008-8749(02)00517-8
53. Hornung V, Rothenfusser S, Britsch S, Krieger S, Krug A, Jahrsdorfer B, Giese T, et al. Quantitative expression of toll-like receptor 1-10 mRNA in cellular subsets of human peripheral blood mononuclear cells and sensitivity to CpG oligodeoxynucleotides. *J Immunol.* (2002) 168:4531–7. doi: 10.4049/jimmunol.168.9.4531
54. Ito T, Amakawa R, Kaisho T, Hemmi H, Tajima K, Uehira K, et al. Interferon-alpha and interleukin-12 are induced differentially by Toll-like receptor 7 ligands in human blood dendritic cell subsets. *J Exp Med.* (2002) 195:1507–12. doi: 10.1084/jem.20020207
55. Fernandez CS, Amarasena T, Kelleher AD, Rossjohn J, McCluskey J, Godfrey DI, et al. MAIT cells are depleted early but retain functional cytokine expression in HIV infection. *Immunol Cell Biol.* (2015) 93:177–88. doi: 10.1038/icb.2014.91
56. Walker LJ, Kang YH, Smith MO, Tharmalingham H, Ramamurthy N, Fleming VM, et al. Human MAIT and CD8 α cells develop from a pool of type-17 precommitted CD8+ T cells. *Blood.* (2012) 119:422–33. doi: 10.1182/blood-2011-05-353789
57. Ali S, Mann-Nuttel R, Schulze A, Richter L, Alferink J, Scheu S. Sources of type I interferons in infectious immunity: plasmacytoid dendritic cells not always in the Driver's seat. *Front Immunol.* (2019) 10:778. doi: 10.3389/fimmu.2019.00778
58. Soudais C, Samassa F, Sarkis M, Le Bourhis L, Bessoles S, Blanot D, et al. In vitro and in vivo analysis of the gram-negative bacteria-derived riboflavin precursor derivatives activating mouse MAIT cells. *J Immunol.* (2015) 194:4641–9. doi: 10.4049/jimmunol.1403224
59. Curtiss JM, Valenzuela JO, Agarwal P, Lins D, Mescher MF. Type I IFNs provide a third signal to CD8 T cells to stimulate clonal expansion and differentiation. *J Immunol.* (2005) 174:4465–9. doi: 10.4049/jimmunol.174.8.4465
60. Urban SL, Welsh RM. Out-of-sequence signal 3 as a mechanism for virus-induced immune suppression of CD8 T cell responses. *PLoS Pathog.* (2014) 10:e1004357. doi: 10.1371/journal.ppat.1004357
61. Welsh RM, Bahl K, Marshall HD, Urban SL. Type 1 interferons and antiviral CD8 T-cell responses. *PLoS Pathog.* (2012) 8:e1002352. doi: 10.1371/journal.ppat.1002352

62. Gil MP, Ploquin MJ, Watford WT, Lee SH, Kim K, Wang X, et al. Regulating type 1 IFN effects in CD8 T cells during viral infections: changing STAT4 and STAT1 expression for function. *Blood*. (2012) 120:3718–28. doi: 10.1182/blood-2012-05-428672
63. Pesu M, Muul L, Kanno Y, O'Shea JJ. Proprotein convertase furin is preferentially expressed in T helper 1 cells and regulates interferon gamma. *Blood*. (2006) 108:983–5. doi: 10.1182/blood-2005-09-3824
64. Lamichhane R, Galvin H, Hannaway RF, de la Harpe SM, Munro F, Tyndall JD, et al. Type I interferons are important co-stimulatory signals during T cell receptor mediated human MAIT cell activation. *Eur J Immunol*. (2019) 50:178–91.
65. Huber JP, Farrar JD. Regulation of effector and memory T-cell functions by type I interferon. *Immunology*. (2011) 132:466–74. doi: 10.1111/j.1365-2567.2011.03412.x
66. Kolumam GA, Thomas S, Thompson LJ, Sprent J, Murali-Krishna K. Type I interferons act directly on CD8 T cells to allow clonal expansion and memory formation in response to viral infection. *J Exp Med*. (2005) 202:637–50. doi: 10.1084/jem.20050821
67. Curtsinger JM, Lins DC, Mescher MF. Signal 3 determines tolerance versus full activation of naive CD8 T cells: dissociating proliferation and development of effector function. *J Exp Med*. (2003) 197:1141–51. doi: 10.1084/jem.20021910
68. Ramos HJ, Davis AM, Cole AG, Schatzle JD, Forman J, Farrar JD. Reciprocal responsiveness to interleukin-12 and interferon-alpha specifies human CD8+ effector versus central memory T-cell fates. *Blood*. (2009) 113:5516–25. doi: 10.1182/blood-2008-11-188458
69. Hervas-Stubbs S, Riezu-Boj JI, Gonzalez I, Mancheno U, Dubrot J, Azpilicueta A, et al. Effects of IFN-alpha as a signal-3 cytokine on human naive and antigen-experienced CD8(+) T cells. *Eur J Immunol*. (2010) 40:3389–402. doi: 10.1002/eji.201040664
70. Miyagi T, Gil MP, Wang X, Louten J, Chu WM, Biron CA. High basal STAT4 balanced by STAT1 induction to control type 1 interferon effects in natural killer cells. *J Exp Med*. (2007) 204:2383–96. doi: 10.1084/jem.20070401
71. Nguyen KB, Watford WT, Salomon R, Hofmann SR, Pien GC, Morinobu A, et al. Critical role for STAT4 activation by type 1 interferons in the interferon-gamma response to viral infection. *Science*. (2002) 297:2063–6. doi: 10.1126/science.1074900
72. Martinet V, Tonon S, Torres D, Azouz A, Nguyen M, Kohler A, et al. Type I interferons regulate eomesodermin expression and the development of unconventional memory CD8(+) T cells. *Nat Commun*. (2015) 6:7089.
73. Mostafavi S, Yoshida H, Moodley D, LeBoite H, Rothamel K, Raj T, et al. Parsing the interferon transcriptional network and its disease associations. *Cell*. (2016) 164:564–78. doi: 10.1016/j.cell.2015.12.032
74. Good SR, Thieu VT, Mathur AN, Yu Q, Stritesky GL, Yeh N, et al. Temporal induction pattern of STAT4 target genes defines potential for Th1 lineage-specific programming. *J Immunol*. (2009) 183:3839–47. doi: 10.4049/jimmunol.0901411
75. Dias J, Boulouis C, Gorin JB, van den Biggelaar R, Lal KG, Gibbs A, et al. The CD4(-)CD8(-) MAIT cell subpopulation is a functionally distinct subset developmentally related to the main CD8(+) MAIT cell pool. *Proc Natl Acad Sci USA*. (2018) 115:E11513–22.
76. Dias J, Leeansyah E, Sandberg JK. Multiple layers of heterogeneity and subset diversity in human MAIT cell responses to distinct microorganisms and to innate cytokines. *Proc Natl Acad Sci USA*. (2017) 114:E5434–43.
77. Shey MS, Balfour A, Wilkinson KA, Meintjes G. Contribution of APCs to mucosal-associated invariant T cell activation in infectious disease and cancer. *Innate Immun*. (2018) 24:192–202. doi: 10.1177/1753425918768695
78. Kadoki M, Patil A, Thaiss CC, Brooks DJ, Pandey S, Deep D, et al. Organism-level analysis of vaccination reveals networks of protection across tissues. *Cell*. (2017) 171:398–413.e21.
79. McNab F, Mayer-Barber K, Sher A, Wack A, O'Garra A. Type I interferons in infectious disease. *Nat Rev Immunol*. (2015) 15:87–103. doi: 10.1038/nri3787

Conflict of Interest: The authors declare that the research was conducted in the absence of any commercial or financial relationships that could be construed as a potential conflict of interest.

Copyright © 2020 Pavlovic, Gross, Chili, Secher and Treiner. This is an open-access article distributed under the terms of the Creative Commons Attribution License (CC BY). The use, distribution or reproduction in other forums is permitted, provided the original author(s) and the copyright owner(s) are credited and that the original publication in this journal is cited, in accordance with accepted academic practice. No use, distribution or reproduction is permitted which does not comply with these terms.