



HAL
open science

Life-history trait database of European reptile species

Annegret Grimm, Ana María Prieto Ramírez, Sylvain Moulherat, Julie Reynaud, Klaus Henle

► **To cite this version:**

Annegret Grimm, Ana María Prieto Ramírez, Sylvain Moulherat, Julie Reynaud, Klaus Henle. Life-history trait database of European reptile species. *Nature Conservation*, 2014, 9, pp.45-67. 10.3897/natureconservation.9.8908 . hal-02972050

HAL Id: hal-02972050

<https://ut3-toulouseinp.hal.science/hal-02972050>

Submitted on 21 Oct 2020

HAL is a multi-disciplinary open access archive for the deposit and dissemination of scientific research documents, whether they are published or not. The documents may come from teaching and research institutions in France or abroad, or from public or private research centers.

L'archive ouverte pluridisciplinaire **HAL**, est destinée au dépôt et à la diffusion de documents scientifiques de niveau recherche, publiés ou non, émanant des établissements d'enseignement et de recherche français ou étrangers, des laboratoires publics ou privés.

Life-history trait database of European reptile species

Annegret Grimm¹, Ana María Prieto Ramírez¹, Sylvain Moulherat^{2,3},
Julie Reynaud³, Klaus Henle¹

1 UFZ – Helmholtz-Centre for Environmental Research, Department of Conservation Biology, Permoserstr. 13, D-04318 Leipzig, Germany **2** SEEM CNRS – Station d'écologie expérimentale du CNRS à Moulis, 2 route du CNRS, 09200 Moulis, France **3** TerrOiko, 2 rue Clémence Isaure, 31250 Revel, France

Corresponding author: Annegret Grimm (annegret.grimm@ufz.de)

Academic editor: L. Penev | Received 7 November 2014 | Accepted 11 December 2014 | Published 19 December 2014

<http://zoobank.org/869168EE-0701-4EAD-A088-90160C27EA34>

Citation: Grimm A, Ramírez AMP, Moulherat S, Reynaud J, Henle K (2014) Life-history trait database of European reptile species. Nature Conservation 9: 45–67. doi: 10.3897/natureconservation.9.8908

Abstract

Life-history data are essential for providing answers to a wide range of questions in evolution, ecology, and conservation biology. While life history data for many species, especially plants, are available online, life history traits of European reptiles are available only widely scattered in different languages and primarily in printed media. For this reason, we generated a comprehensive trait database covering all European reptile species. Data were compiled by searching the peer-reviewed and non-peer-reviewed literature. The database covers the whole of Europe and neighbouring Asian and African countries. Traits were categorised under five main headings: Activity / Energy / Habitat; Phenology; Movement; Sexual Maturity; and Morphometry. To ensure that the data were standardised, we defined trait data categories before we started compiling data. All entries were checked by at least one other person. The dataset provides a unique source for meta-analyses and modelling in ecology and conservation biology.

Keywords

Activity, Europe, life history traits, lizards, movement, phenology, Reptilia, Sauria, Serpentes, Testudines

Introduction

Large-scale analyses of drivers of biodiversity, biodiversity patterns, and global processes are gaining increasingly more importance in ecology and conservation science. Recent examples of large-scale analyses and meta-analyses on biodiversity investigated among other aspects the minimum area requirements of species (Pe'er et al. 2014), the scaling behaviour of beta-diversity (Keil et al. 2012), dispersal (Stevens et al. 2010), niche ecology (Kearney and Porter 2009, Schulte et al. 2012), the effects of climate warming on biodiversity (Deutsch et al. 2008, Sinervo et al. 2010), the effects of fragmentation of tropical forests on climate change (Pütz et al. 2014), and the monitoring of land use effects on biodiversity (Kuussaari et al. 2007, Kahl and Bauhus 2014).

Species traits play an important role in such large-scale analyses since they can affect but also respond to abiotic and biotic processes (Kleyer 1999, Chapin et al. 2000, Ilg et al. 2012, Pütz et al. 2014). Available trait information for some species also enables generalisations to species for which the trait is difficult to measure. This is of particular importance in applied biodiversity conservation when decisions have to be made for species for which knowledge is limited. This is the case, for example, for dispersal potential in the assessment of connectivity (Stevens et al. 2010, 2013), minimum area requirements in the design of conservation areas (Pe'er et al. 2014), and the identification of species that are sensitive to fragmentation (Henle et al. 2004). The use of traits can therefore greatly improve our understanding of ecological patterns and processes and their relevance for the conservation of biodiversity.

Trait data are usually published in widely dispersed literature and therefore difficult to access. Hence, a compilation of such data in handbooks (e.g. Novosolov et al. 2013) or in databases is essential to support the study of large-scale ecological processes and patterns. Due to their key role in ecosystem processes, traits for several groups of species have been compiled and made available, e.g. several plant traits [Klotz et al. 2003 (www.biolflor.de), Kleyer et al. 2008 (www.leda-traitdatabase.org), Kattge et al. 2011 (www.try-db.org)], bees [Bees, Wasps & Ants Recording Society 2014 (www.bwars.com)], syrphids [Speight et al. 2000 (www.iol.ie/~millweb/syrph/syrphid.htm)], butterflies [Jonko et al. 2014 (<http://www.lepidoptera.eu/>)], amphibians [Trochet et al. 2014 (<http://biodiversitydatajournal.com/articles.php?id=4123>)], and birds [Koposová et al. 2014 (<http://scales.ckff.si/scaletool/index.php?menu=6>)]. However, we are not aware of a global species trait database that exists for reptiles although a general compilation of reptile species names and distribution exists (Uetz and Hošek 2014) and a compilation of trait data have been published in printed form e.g. for Mexico (Sinervo et al. 2010) and some selected traits of 641 lizard species from around the world (Novosolov et al. 2013). For this reason, within the project SCALES (Henle et al. 2010) we developed a trait database covering all European reptile species since the project was predominantly based in Europe. We mainly aimed to obtain phenological and movement data from across the geographic distribution of the species covered. However, other information on activity, energy, habitat, sexual maturity, and morphometry were also included.

The reptile trait database is an open access database. A user-friendly interface including browse options is provided on the SCALES project webpage (<http://scales.ckff.si/scaletool/>), but we also provide access to raw data through Dryad (doi: 10.5061/dryad.hb4ht). We will keep the database active and update it frequently. We therefore invite all of our readers to provide published data that can be added to the database. If you are interested in submitting data, please contact the authors and send the respective papers. The data will be checked by us for plausibility (especially non-peer-reviewed publications) before being entered into the database.

Data resources

Data published through Dryad: <http://dx.doi.org/10.5061/dryad.hb4ht>

Data published through SCALETOOL: <http://scales.ckff.si/scaletool/?menu=6&submenu=0>

Project details

Project title: Securing the conservation of biodiversity across administrative levels and spatial, temporal, and ecological scales (SCALES) (Henle et al. 2010)

Subproject: Trait database of reptile life histories

Personnel: Klaus Henle (Project Coordinator, Taxonomic Expert, and Data Compilation), Annegret Grimm (Data Compilation and Data Manager), Ana María Prieto Ramírez (Data Compilation), Sylvain Moulherat (Data Compilation), Julie Reynaud (Data Compilation)

Funding: FP7 integrated project SCALES; EU Grant no. 226852

Taxonomic coverage

General taxonomic coverage description: The coverage of this database spans the class of Reptilia in the Kingdom Animalia. The database collates the species traits of all 122 European species belonging to 43 genera recognized by the SEH Atlas of 2004 (Gasc et al. 2004), which was the most up-to-date list when we started our data compilation (referred to as *SEH taxonomy* in the database; Suppl. material 1: Table S1). Since the atlas was published, many names changed both at and below the generic level, primarily by splitting previous taxa. Currently, there are several lists of European reptile species available (Sindaco and Jeremčenko 2008, Cox and Temple 2009, Speybroeck et al. 2010, Mayer 2013, Glandt 2014, Sillero et al. 2014, Uetz and Hošek 2014) that deviate from each other in recognition of some taxa and also in terms of geographic coverage (see below). Unfortunately, justifications for the acceptance or rejection of taxa are rather limited for several of these lists, with Speybroeck et al. (2010) being

the most comprehensive one. We therefore largely followed them but evaluated several more recent name changes by using original publications. We agree with Speybroeck et al. (2010) that the scientific name of a species should only be changed if there is strong evidence of it being necessary to reflect evolutionary history and if data are supported by sound evidence. On the other hand, further taxon splitting is a necessary consequence of advances in systematics. Strong evidence for us means that a name change is backed by sufficiently comprehensive sampling, by consistent evidence from more than one character set analysed with appropriate statistical methods, and by sound biogeographic scenarios. For inclusion in the database, an additional criterion had to be fulfilled: the distribution of the taxa involved must have been worked out sufficiently to allow allocation of life-history data to a particular taxon without uncertainty. This resulted in 144 recognized species belonging to 59 genera (named *current taxonomy* in the database; Suppl. material 1: Table S1). Deviations from Speybroeck et al. (2010) and Sillero et al. (2014) are listed and justified in Suppl. material 2: Table S2. The database is designed in such a way that taxa (European or non-European) can be added without a need to change the structure of the database. The database can be searched using both the original names as in Gasc et al. (2004) as well as the updated names. We allocated data that were published before species complexes were split to the relevant new taxa if this allocation could be made with certainty.

Taxonomic ranks

Kingdom: Animalia.

Phylum: Chordata.

Class: Reptilia.

Order: Testudines, Squamata (Amphisbaenia, Sauria, Serpentes).

Family: Agamidae, Anguillidae, Blanidae, Boidae, Chamaeleonidae, Cheloniidae, Colubridae, Dermochelyidae, Emydidae, Gekkonidae, Geomyidae, Lacertidae, Lamprophiidae, Natricidae, Phyllodactylidae, Scincidae, Sphaerodactylidae, Testudinidae, Typhlopidae, Viperidae.

Family names of reptiles also changed since 2004. Our list follows the family names accepted in the TIGR global reptile database (Uetz and Hošek 2014).

Common Name: Reptiles, Snakes, Lizards, Tortoises.

Spatial coverage

General spatial coverage: Our database covers Europe. Neither politically nor geographically has the boundary of Europe been universally agreed upon and overviews of the distribution of reptile species used different existing delimitations (Mertens and Wermuth 1960, Böhme 1981, Gasc et al. 2004, Cox and Temple 2009, Speybroeck et al. 2010, Sillero et al. 2014). We followed Mertens and Wermuth (1960), Böhme

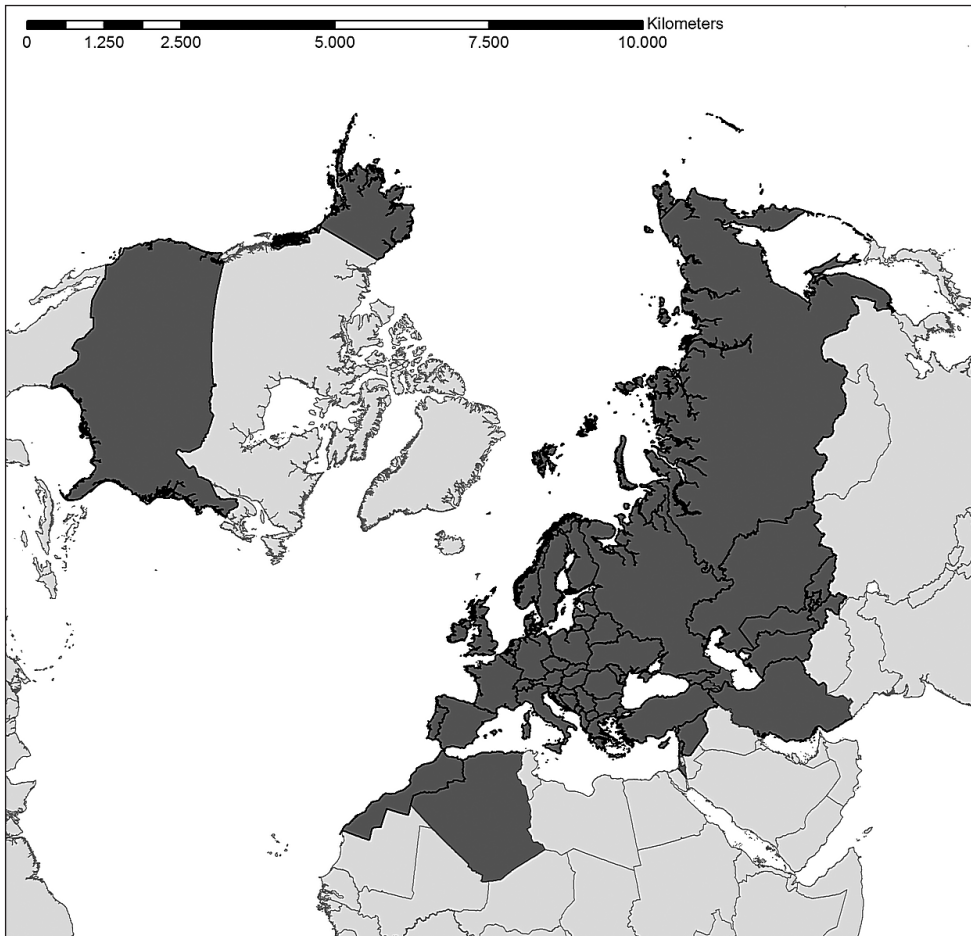


Figure 1. Spatial coverage of the database. Grey countries (46 European countries plus neighbouring countries in Asia, namely Armenia, Azerbaijan, Georgia, Iran, Israel, Kazakhstan, Kyrgyzstan, Lebanon, Russia, Syria, Tajikistan, Turkey, Turkmenistan, and Uzbekistan, plus the African countries Algeria and Morocco) are covered by the database. This map shows the countries in general and not the region where data points are from. This map was created using ArcGIS® software by Esri (www.esri.com) with an European Lambert Azimuthal Equal Area projection. © Esri, all rights reserved.

(1981), and Gasc et al. (2004), using the following delimitation of “Europe”: reaching across the Ural Mountains, the Ural River, the Caspian Sea, the main Caucasus Divide, the Black Sea, including the Marmara Sea and the Aegean Sea along the divide of the European and Asiatic shelf as well as the European and African tectonic plates (Figure 1). Mascarene Island and the Azores, which politically but not geographically belong to Europe are currently not included, nor are the Selvagenes and the Canary Islands. Our data therefore covers 46 European countries. Speybroeck et al. (2010), in contrast, did not include former republics of the Soviet Union that are partially or completely within Europe (see Suppl. material 2: Table S2.1). Cox and Temple (2009)

are inconsistent in including Greek islands on the Asian shelf but excluding Mediterranean Spanish islands on the African shelf. They further included the Mascarene Island, Selvagenes, and the Canary Islands. Our database is designed in such a way that countries or other geographic entities can be added without a need to change the database structure.

As we wanted to cover European species comprehensively, we also included extra-limital data in the database. We found data for neighbouring countries in Asia (Armenia, Azerbaijan, Georgia, Iran, Israel, Kazakhstan, Kyrgyzstan, Lebanon, Russia, Syria, Tajikistan, Turkey, Turkmenistan, and Uzbekistan) and Africa (Algeria, Morocco) (Figure 1). In addition, case studies from the USA about the invasive European gecko *Hemidactylus turcicus* are included as such data are highly valuable for an assessment of invasion processes of European species. The designation of geographical entities in the database does not imply the expression of any opinion whatsoever on the part of the data compilers concerning the legal status of any country, territory or area, or of its authorities, or concerning the delimitation of its frontiers or boundaries. It is worth noting that in some older references, older geographic names are used that are difficult to match with modern names; in such cases we either retained the old names or used a more inclusive geographic name that encompasses the name in question. The database enables all geographic names to be listed that are used in the database.

Temporal coverage

Currently until mid-2014, life-history trait data were published primarily after the mid-1960s and for many Eastern and southern European taxa primarily in the last 10 years.

Methods

Method step description: We carried out a literature survey in the form of focal species surveys of all European reptiles. A very useful starting point was the Handbook of European Reptiles (in German) (Böhme 1981), as well as French (Arnold and Ovenen 2010) and Spanish (Escarré and Verricard 1981, Salvador and Marco 2009) handbooks and our own extensive collection of life-history publications. These sources already compiled a substantial part of the relevant publications. For species, for which we retrieved no data in above sources, we conducted targeted searches in the ISI web of knowledge, in Google Scholar, and in Google published in English, German, French, and Spanish. We tried to trace any potentially relevant sources cited in the publications found from these searches. Moreover, we presented our project at herpetological conferences to expand our literature sources from experts. However, we only entered data from published literature into the database. The publications that were used to provide data for the database are listed in References. Together, these sources covered

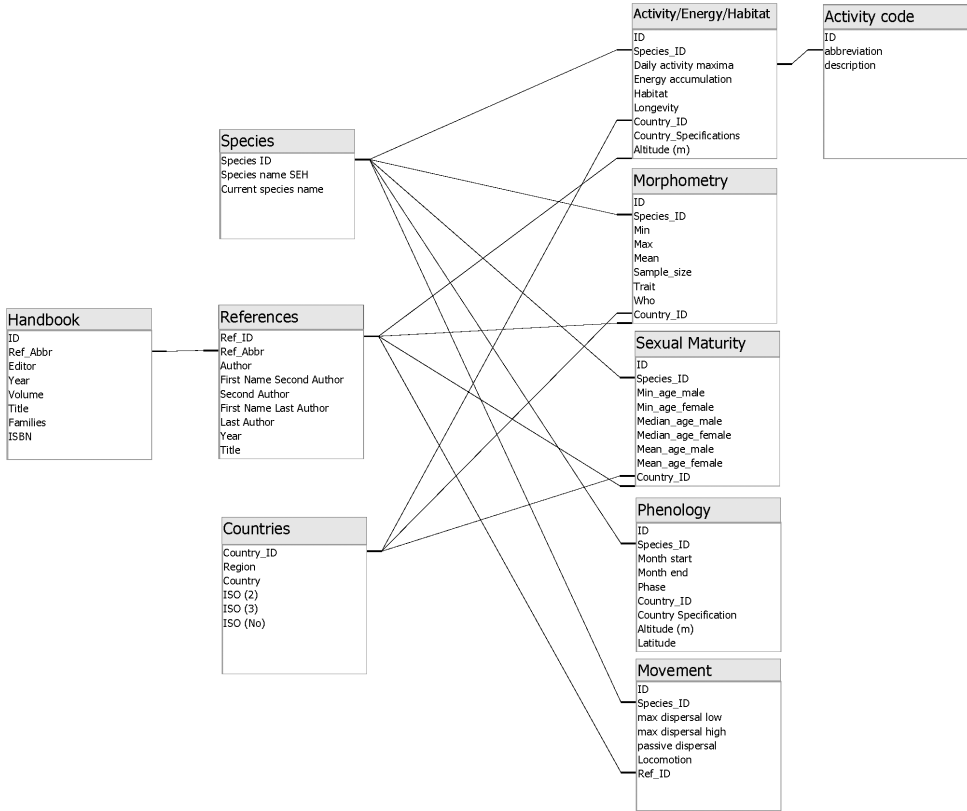


Figure 2. Graphical representation of the database including relationships between the basic tables (*Species*; *References*; *Countries*) and the trait tables (*Activity / Energy / Habitat*; *Sexual Maturity*; *Phenology*; *Movement*; *Morphometry*).

all European reptile species except a few recently described taxa, such as *Dalmatolacerta montenegrina*, for which no life-history data have been published.

Study extent description: All European reptile species are covered in the database without accounting for temporal restrictions as to when the study was conducted.

Sampling description: Before starting the literature search, we decided upon a database structure (Figure 2, described below) and the main topics to be covered. The main topics selected were activity and energy traits, phenological traits, movement/dispersal traits, age at sexual maturity, and morphometry. The literature was searched using specific key words linked to these topics. Detailed definitions of the categories are given below.

Quality control description: All data entries were checked by at least one person other than the one who entered the data. This check also included a plausibility check of the original data. We did not include any data in the database that we could not allocate with certainty to the categories used by us or that were ambiguous in terms of the entity to which they applied.

Dataset descriptions

Our database comprises two sections: basic information and actual trait data. In the basic section, general information about taxonomy, references, and countries is stored. The trait data section is divided into the following: *Activity / Energy / Habitat; Phenology; Sexual Maturity; Movement; and Morphometry*.

Object name: Trait database of reptile life histories

Character encoding: UTF-16

Format name: Microsoft Access Database

Format version: Microsoft® Access® 2010 (14.0.7104.5000) SP2 MSO (14.0.7116.5000) as part of Microsoft Office Professional Plus 2010

Distribution: <http://scales.ckff.si/scaletool/?menu=6&submenu=0> and <http://dx.doi.org/10.5061/dryad.hb4ht>

Publication date: 2014–01–21 and 2014–12–08, respectively

Language: English

Licenses of use: Data have been made available under the Creative Commons CC-Zero Waiver: <http://creativecommons.org/publicdomain/zero/1.0/>. Thus, the data can be freely used for non-commercial purposes provided the source is acknowledged. See Creative Commons for more details of the conditions of usage.

Metadata descriptions

Our relational database is divided into a basic section and the actual trait section (Figure 2). The basic section comprises three tables: *Species*, which lists all 144 European reptile species that we recognised (see the section on taxonomic coverage); *References*, listing all published sources for data extraction (166 in total); *Countries*, listing 46 European, 14 Asian, and 2 African countries and the USA, which is where reptile trait data stem from including their ISO 2, ISO 3, and ISO No codes. In addition, we have names for supranational geographic regions, such as the Caucasus or the Mediterranean, for data where it is not clear from the original source to which country they apply.

In the trait data section, five main tables were created according to the five main topics (*Activity / Energy / Habitat; Phenology; Movement; Sexual Maturity; Morphometry*). All tables are provided with species ID, country ID, country specifications (geographic regions within countries if published), altitude (if published), latitude (if published), longitude (if published), and reference ID so that each data point can be tracked correctly. The definitions and contents of the five tables are described in the following. The words in italics stand for column headings. Capital letters are used for the five main tables.

Activity / Energy / Habitat: Data about *daily activity* describe activity peaks during the day including activity switches within the year. These activity patterns were defined as ten different categories: (1) cn: crepuscular/nocturnal; (2) dn: active the entire

day, no circadian rhythm (diurno-nocturnal); (3) tn: nocturnal, but thermoregulation during the day possible; (4) hu: humidity dependent, no circadian rhythm; (5) 1: one activity peak during the day throughout the year (unimodal); (6) 2: two activity peaks during the day throughout the year (bimodal); (7) as1a: activity shift: summer: one peak during dusk or night (crepuscular or nocturnal), spring/autumn one peak during the day (diurnal) [it is possible that species show bimodal activity between the switch diurnal to nocturnal]; (8) as1b: activity shift: one peak during the day throughout the year, shifted to the morning during the summer; (9) as2a: activity shift: in summer two peaks during the day, spring/autumn: one peak during the day but diurnal throughout the year; (10) as2b: activity shift: summer: one peak during dusk or night (crepuscular/nocturnal), spring/autumn: two peaks during the day (morning/afternoon).

Data about *energy accumulation* denote when species accumulate energy for reproduction (i.e., spring, summer, autumn, or from the previous year – text strings). Moreover, their *habitat* (free text string using general habitat descriptions) and their maximum *longevity* (in years) were listed.

Phenology: Phenological traits refer to four *phases*: the first and second breeding season, aestivation, and hibernation. Each phase is specified by a specific *start* and *end month*. If a publication mentioned a range for the start or end month for a particular area, we used the first month mentioned as the start month and the last month mentioned as the end month for the breeding seasons (to specify the maximum duration available for breeding). For hibernation, in contrast, we used the last month to specify the start month and the first month to designate the end month; thus hibernation data allow a calculation of the maximum time (in months) available for activity.

Movement: Data on movement cover true dispersal, home range movement, and migration because most references do not sufficiently differentiate between these processes. However, if data were sufficiently explicit, we solely used dispersal data. Movement data larger than 250 m were rounded off to 250 m. The reference time span is not necessarily one year but depends on the study described in the original paper. The data in the database are the highest values given by the reference publication for a specific reference area. If a range of maximum dispersal/movement was given in the reference, we provide the lower value in the column *maximum movement low* and the higher value as *maximum movement high*. If no range was given, data were allocated to the latter. Furthermore, *passive dispersal* provides information about whether a species may be dispersed passively through human activities. In addition we provide information about the type of *locomotion* (e.g. swimmers, climbers, runners, or combinations between them).

Sexual Maturity: Age at sexual maturity (in months) was defined as the *minimum*, *median*, or *mean age* for *males* respectively *females*. The minimum age refers to the lowest age at sexual maturity provided for a specific reference for a specific country. The median age is the age at which 50% (usually most) individuals reach sexual maturity. Mean age is only given if explicit values were provided by the relevant publication.

Morphometry: In the last section, morphometric data are provided as *minimum*, *maximum*, and *mean* values (depending on the data given in the consulted literature).

If published, a *sample size* was listed. *Traits* were specified as mass, length, width, number, or size. These traits always refer to denoted parts of the population (*Who*), such as females, males, hatchlings, juveniles, eggs, or clutches. This structuring allows a maximum number of possible combinations, while using minimal memory space.

Since our database was built as a relational database, IDs between the basic and the trait tables were linked to each other for fast searches and queries (Figure 2).

Metadata language: English

Date of metadata creation: 2014–09–12

Hierarchy level: Database

Acknowledgements

Thanks are due to all those who provided data for this compilation. Funding for this study was provided by the EU FP-7 project SCALES (Henle et al. 2010; www.scales-project.net; grant no. 226852).

References

- Arnold N, Ovenden D (2010) Le guide herpéto, 228 amphibiens et reptiles d'Europe. Delachaux et Niestlé, 290 pp.
- Böhme W (1981) Handbuch der Reptilien und Amphibien Europas. Aula-Verlag, Wiesbaden.
- Chapin FS, Zavaleta ES, Eviner VT, Naylor RL, Vitousek PM, Reynolds HL, Hooper DU, Lavorel S, Sala OE, Hobbie SE, Mack MC, Díaz S (2000) Consequences of changing biodiversity. *Nature* 405: 234–242. doi: 10.1038/35012241
- Cox NA, Temple HJ (2009) European Red List of Reptiles. Office for Official Publications of the European Communities, Luxembourg, 32 pp.
- Deutsch CA, Tewksbury JJ, Huey RB, Sheldon KS, Ghalambor CK, Haak DC, Martin PR (2008) Impacts of climate warming on terrestrial ectotherms across latitude. *PNAS* 105: 6668–6672. doi: 10.1073/pnas.0709472105
- Escarré A, Verricard JR (1981) Saurios y Ofidios. Cuadernos de la Fauna Alicantina I. Diputación de Alicante.
- Gasc JP, Cabela A, Crnobrnja-Isailovic J, Dolmen D, Grossenbacher K, Haffner P, Lescure J, Martens H, Martínez Rica JP, Maurin H, Oliveira ME, Sofianidou TS, Veith M, Zuijderwijk A (2004) Atlas of Amphibians and Reptiles in Europe. Collection Patrimoines Naturels, 29, Societas Europaea Herpetologica, Publications scientifiques du Muséum, Paris, 496 pp. http://www.seh-herpetology.org/Distribution_Atlas/Reptiles_in_Europe
- Glandt D (2014) Liste der Amphibien und Reptilien Europas und der angrenzenden Atlantischen Inseln. Aktualisierte Artenliste zu: Glandt D (2010) Taschenlexikon der Amphibien und Reptilien Europas. Alle Arten von den Kanarischen Inseln bis zum Ural. Quelle & Meyer, Wiebelsheim, 634 pp.

- Henle K, Davies KF, Kleyer M, Margules C, Settele J (2004) Predictors of species sensitivity to fragmentation. In: Henle K, Lindenmayer DB, Margules CR, Saunders DA, Wissel C (Eds) *Species Survival in Fragmented Landscapes: Where to from now?* Special Issue *Biodiversity Conservation* 13: 207–251.
- Henle K, Kunin W, Schweiger O, Schmeller DS, Grobelnik V, Matsinos Y, Pantis J, Penev L, Potts SG, Ring I, Similä J, Tzanopoulos J, van den Hove S, Baguette M, Clobert J, Excoffier L, Framstad E, Grodinska-Jurczak M, Lengyel S, Marty P, Moilanen A, Porcher E, Storch D, Steffan-Dewenter I, Sykes MT, Zobel M, Settele J (2010) Securing the conservation of biodiversity across administrative levels and spatial, temporal, and ecological scales. *GAIA* 19(3): 187–193.
- Ilg C, Foeckler F, Deichner O, Henle K (2012) Hydrological gradient and species traits explain gastropod diversity in floodplain grasslands. *River Research and Applications* 28: 1620–1629. doi: 10.1002/rra.1552
- Kahl T, Bauhus J (2014) An index of forest management intensity based on assessment of harvested tree volume, tree species composition and dead wood origin. *Nature Conservation* 8: 15–27. doi: 10.3897/natureconservation.7.7281
- Kearney M, Porter W (2009) Mechanistic niche modelling: combining physiological and spatial data to predict species' ranges. *Ecology Letters* 12: 334–350. doi: 10.1111/j.1461-0248.2008.01277.x
- Keil P, Schweiger O, Kühn I, Kunin WE, Kuussaari M, Settele J, Henle K, Brotons L, Pe'er G, Lengyel S, Moustakas A, Steinicke H and Storch D (2012) Patterns of beta diversity in Europe: the role of climate, land cover and distance across scales. *Journal of Biogeography* 39: 1473–1486. doi: 10.1111/j.1365-2699.2012.02701.x
- Kleyer M (1999) Distribution of plant functional types along gradients of disturbance intensity and resource supply in an agricultural landscape. *Journal of Vegetation Science* 10: 697–708. doi: 10.2307/3237084
- Kuussaari M, Heliölä J, Pöyry J, Saarinen K (2007) Contrasting trends in butterfly species preferring semi-natural grasslands, field margins and forest edges in northern Europe. *Journal of Insect Conservation* 11: 351–366. doi: 10.1007/s10841-006-9052-7
- Mayer W (2013) Kommentierte Lacertiden-Liste für Europa, Afrika, den Nahen Osten inklusive der Arabischen Halbinsel und Asien. *L@CERTIDAE* 2013: 81–141.
- Mertens R, Wermuth H (1960) *Die Amphibien und Reptilien Europas (Dritte Liste nach dem Stand vom 1.1.1960)*. Kramer, Frankfurt, 264 pp.
- Novosolov M, Raia P, Meiri S (2013) The island syndrome in lizards. *Global Ecology and Biogeography* 22: 184–191.
- Pe'er G, Tsianou MA, Franz KW, Matsinos GY, Mazaris AD, Storch D, Kopsova L, Verboom J, Baguette M, Stevens VM, Henle K (2014) Toward better application of Minimum Area Requirements in conservation planning. *Biological Conservation* 170: 92–102. doi: 10.1016/j.biocon.2013.12.011
- Pütz S, Groeneveld J, Henle K, Knogge C, Martensen AC, Metz M, Metzger JP, Ribeiro MC, de Paula MD, Huth A (2014) Long-term carbon loss in fragmented neotropical forests. *Nature Communications* 5, article 5037.

- Salvador A, Marco A (2009) Enciclopedia Virtual de los Vertebrados Españoles. Museo Nacional de Ciencias Naturales, Madrid.
- Schulte U, Hochkirch A, Lötters S, Rödder D, Schweiger S, Weimann T, Veith M (2012) Cryptic niche conservatism among evolutionary lineages of an invasive lizard. *Global Ecology and Biogeography* 21: 198–211. doi: 10.1111/j.1466-8238.2011.00665.x
- Sillero N, Campos J, Bonardi A, Corti C, Creemers R, Crochet P-A, Isailović JC, Denoël M, Ficitola GF, Gonçalves J, Kuzmin S, Lymberakis P, de Pous P, Rodríguez A, Sindaco R, Speybroeck J, Toxopeus B, Vieites DR, Vences M (2014) Updated distribution and biogeography of amphibians and reptiles of Europe. *Amphibia-Reptilia* 35: 1–31. doi: 10.1163/15685381-00002935
- Sindaco R, Jeremčenko VK (2008) The reptiles of the western Palearctic. 1. Annotated checklist and distributional atlas of the turtles, crocodiles, amphisbaenians and lizards of Europe, North Africa, Middle East and Central Asia. Edizioni Belvedere, Latina, 580 pp.
- Sinervo B, Méndez-de-la-Cruz F, Miles DB, Heulin B, Bastiaans E, Cruz MV-S, Lara-Resendiz R, Martínez-Méndez N, Calderón-Espinosa ML, Meza-Lázaro RN, Gadsden H, Avila LJ, Morando M, De la Riva IJ, Sepulveda PV, Rocha CFD, Ibarregüengoytia N, Puntriano CA, Massot M, Lepetz V, Oksanen TA, Chapple DG, Bauer AM, Branch WR, Clobert J, Sites Jr. JW (2010) Erosion of lizard diversity by climate change and altered thermal niches. *Science* 328: 894–899. doi: 10.1126/science.1184695
- Speybroeck J, Beukema W, Crochet P-A (2010) A tentative species list of the European herpetofauna (Amphibia and Reptilia) – an update. *Zootaxa* 2492: 1–27.
- Stevens VM, Turlure C, Baguette M (2010) A meta-analysis of dispersal in butterflies. *Biological Reviews* 83: 625–642.
- Stevens VM, Trochet A, Blanchet S, Moulherat S, Clobert J, Baguette M (2013) Dispersal syndromes and the use of life-histories to predict dispersal. *Evolutionary Applications* 6: 630–642. doi: 10.1111/eva.12049
- Uetz P, Hošek J (2014) The Reptile Database; <http://www.reptile-database.org>, accessed Aug 7, 2014.

References used for the compilation of data in the database.

- Aleksic I, Ljubisavljevic K (2001) Reproductive cycle in the common wall lizards (*Podarcis muralis*) from Belgrade. *Archives of Biological Science Belgrade* 2000: 73–81.
- Amat F, Lloente GA, Carretero MA (2000) Reproductive cycle of the sand lizard (*Lacerta agilis*) in its southwestern range. *Amphibia-Reptilia* 21: 463–476. doi: 10.1163/156853800300059340
- Arakelyan M (2002) The study of age, growth, and longevity in the triploid hybrids of rock lizards of the genus *Darevskia* in Armenia. *Russian Journal of Herpetology* 9: 63–68.
- Arnold N, Ovenden D (2010) Le guide herpéto, 228 amphibiens et reptiles d'Europe. Delachaux et Niestlé.
- Arntzen JW, Sa-Sousa P (2007) Morphological and genetical differentiation of lizards (*Podarcis bocagei* and *Podarcis hispanica*) in the Ria de Arosa Archipelago (Galicia, Spain) resulting from vicariance and occasional dispersal. In: Renema W (Ed.) *Biogeography, Time and Place: Distributions, Barriers and Islands*. Springer Verlag, 365–401.

- Arribas, OJ (1994) Diagnosis and redescription of *Lacerta bonnali* (Lantz, 1927). Bolletino del Museo Regionale di Scienze Naturali (Torino) 12: 357–366.
- Arribas OJ (1996) Taxonomic revision of the Iberian ‘Archaeolacertae’ I.: A new interpretation of the geographical variation of ‘*Lacerta monticola* Boulenger, 1905 and ‘*Lacerta cyreni* Müller & Hellmich, 1937. Herpetozoa 9: 31–56.
- Arribas OJ (2004) Characteristics of the reproductive biology of *Iberolacerta aurelioi* (Arribas, 1994) (Squamata: Sauria: Lacertidae). Herpetozoa 17: 3–18.
- Arribas OJ (2009) Lagartija pirenaica- *Iberolacerta bonnali*. In: Salvador, A, Marco, A (Eds) Enciclopedia Virtual de los Vertebrados Españoles. Museo Nacional de Ciencias Naturales Madrid.
- Arribas OJ (2010) Activity, microhabitat selection and thermal behavior of the Pyrenean rock lizards *Iberolacerta aranica* (Arribas, 1993), *I. aurelioi* (Arribas, 1994) and *I. bonnali* (Lantz, 1927). Herpetozoa 23: 3–23.
- Arribas OJ, Galán P (2005) Reproductive characteristics of the Pyrenean high-mountain lizards: *Iberolacerta aranica* (Arribas, 1993), *I. aurelioi* (Arribas, 1994) and *I. bonnali* (Lantz, 1927). Animal Biology 55: 163–190. doi: 10.1163/1570756053993505
- Barbault R, Mou Y-P (1988) Population dynamics of the common wall lizard, *Podarcis muralis*, in Southwestern France. Herpetologica 44: 38–47.
- Bauwens D, Diaz-Uriarte R (1997) Covariation of life-history traits in lacertid lizards: A comparative study. The American Naturalist 149: 91–111. doi: 10.1086/285980
- Bauwens D, Verheyen RF (1985) The timing of reproduction in the lizard *Lacerta vivipara*. Differences between individual females. Journal of Herpetology 19: 353–364. doi: 10.2307/1564263
- Bauwens D, Verheyen RF (1987) Variation of reproductive traits in a population of the lizard *Lacerta vivipara*. Holarctic Ecology 10: 120–127.
- Bender C, Hildebrandt H, Schmidt-Loske K, Grimm V, Wissel C, Henle K (1996) Consolidation of vineyards, mitigations, and survival of the common wall lizard (*Podarcis muralis*) in isolated habitat fragments. In: Settele J, Margules CR, Poschold P, Henle K (Eds) Species Survival in Fragmented Landscapes. Kluwer, Dordrecht, 248–261. doi: 10.1007/978-94-009-0343-2_30
- Bergman J (1989) Neues über *Podarcis taurica* (Pallas, 1989) in der asiatischen Türkei. Salamandra 26: 85–86.
- Berglund SA (2000) Demography and management of relict sand lizard *Lacerta agilis* populations on the edge of extinction. Ecological Bulletins 48: 123–142.
- Blanke I (2010) Die Zauneidechse: zwischen Licht und Schatten. Beiheft der Zeitschrift für Feldherpetologie 7: 1–176.
- Böhme W (1981) Handbuch der Reptilien und Amphibien Europas. Band 1. Echsen (Sauria) I. Aula-Verlag, Wiesbaden.
- Böhme W (1984) Handbuch der Reptilien und Amphibien Europas. Band 2/I. Echsen (Sauria) II (Lacerta). Aula-Verlag, Wiesbaden.
- Böhme W (1986) Handbuch der Reptilien und Amphibien Europas. Band 2/II. Echsen (Sauria) III (Podarcis). Aula-Verlag, Wiesbaden.
- Böhme W (1995) Handbuch der Reptilien und Amphibien Europas. Band 3/1. Schlangen (Serpentes) I (Typhlopidae, Boidae, Colubridae 1). Aula-Verlag, Wiesbaden.

- Böhme W (1999) Handbuch der Reptilien und Amphibien Europas. Band 3/2A. Schlangen (Serpentes) II (Colubridae 2 (Boidinae, Natricinae)). Aula-Verlag, Wiesbaden.
- Böhme W, Fritz U (2001) Handbuch der Reptilien und Amphibien Europas. Band 3/3A. Schildkröten (Testudines) I (Bataguridae, Testudinidae, Emydidae). Aula-Verlag, Wiesbaden.
- Böhme W, Fritz U (2005) Handbuch der Reptilien und Amphibien Europas. Band 3/3B. Schildkröten (Testudines) II (Cheloniidae, Dermochelyidae, Fossile Schildkröten Europas). Aula-Verlag, Wiesbaden.
- Böhme W, Joger U, Stümpel N (2005) Handbuch der Reptilien und Amphibien Europas. Band 3/2B. Schlangen (Serpentes) III (Viperidae). Aula-Verlag, Wiesbaden.
- Braña F (1996) Sexual dimorphism in lacertid lizards: Male head increase vs female abdomen increase? *Oikos* 75: 511–523. doi: 10.2307/3545893
- Braña F, Arrayago MJ, Bea A, Barahona A (1990) Ciclo reproductor y de cuerpos grasos en los machos de *Lacerta monticola cantabrica*. Comparacion entre dos poblaciones situadas a diferente altitud. *Amphibia-Reptilia* 11: 41–52. doi: 10.1163/156853890X00302
- Braña F, Bea A, Arrayago MJ (1991) Egg retention in lacertid lizards: Relationships with reproductive ecology and the evolution of viviparity. *Herpetologica* 47: 218–226.
- Braña F, Gonzalez F, Barahona A (1992) Relationship between ovarian and fat body weights during ootogenesis for three species of lacertid lizards. *Journal of Herpetology* 26: 515–518. doi: 10.2307/1565137
- Braña F, Ji X (2000) Influence of incubation temperature on morphology, locomotor performance, and early growth of hatchling wall lizards (*Podarcis muralis*). *Journal of Experimental Zoology* 286: 422–433. doi: 10.1002/(SICI)1097-010X(20000301)286:4<422::AID-JEZ10>3.0.CO;2-D
- Bressi N (2004) *Algyroides nigropunctatus nigropunctatus* in Italy: notes on ecology, habitat selection and conservation (Reptilia, Lacertidae). *Italian Journal of Zoology* 71: 113–116. doi: 10.1080/11250003.2004.9525546
- Busack SD (1986) Taxonomic implications of biochemical and morphological differentiation in spanish and moroccan populations of the three-toed skinks, *Chalcides chalcides* (Lacertilia, Scincidae). *Herpetologica* 42: 230–236.
- Busack SD, Klostermann LL (1987) Reproduction in a Spanish population of *Acanthodactylus erythrurus*. *Annals of Carnegie Museum* 56: 97–102.
- Caetano MH, Castanet J, Crespo EG (1986) Estimation a l'aide de la squelettochronologie de l'age de *Podarcis hispanica*, (Steindachner, 1870). Sauria, Lacertidae provenant de'une population portugaise. *Revue suisse Zoology* 93: 117–127.
- Carretero MA (1994) Algunes dades morfometricques de *Psammodromus hispanicus* al Prat de Llobregat. *Spartina* 1: 13–19.
- Carretero MA, Llorente GA (1991) Reproducción de *Psammodromus hispanicus* en una arenal costero del nordeste ibérico. *Amphibia-Reptilia* 12: 395–408. doi: 10.1163/156853891X00040
- Carretero MA, Llorente GA (1995) Reproduction of *Acanthodactylus erythrurus* in its northern boundary. *Russian Journal of Herpetology* 2: 10–17.

- Carretero MA, Llorente GA, Santos X (1995) Características reproductoras de una población introducida de *Podarcis pityusensis*. *Revista Espanola de Herpetologica* 1995: 93–102.
- Castilla AM, Barbadillo LJ, Bauwens D (1992) Annual variation in reproductive traits in the lizard *Acanthodactylus erythrurus*. *Canadian Journal of Zoology* 70: 395–402. doi: 10.1139/z92-059
- Castilla AM, Bauwens D (2000) Reproductive characteristics of the island lacertid lizard *Podarcis lilfordi*. *Journal of Herpetology* 34: 390–396. doi: 10.2307/1565362
- Chondropoulos BP, Lykakis J (1983) Ecology of the Balkan wall lizard, *Podarcis taurica ionica* (Sauria:Lacertidae) from Greece. *Copeia* 1983(4): 991–1001. doi: 10.2307/1445101
- Cirer AM (1980) Descripció de deus subspécies noves de *Podarcis pityusensis*. *Bulletin of the Institució Catalana d'Història Natural* 45: 121–126.
- Corti C, Lo Cascia P (2002) The Lizards of Italy and Adjacent Areas. Chimaira, Frankfurt/Main.
- Crnobrnja-Isailovic J, Aleksic I (2004) Clutch size in two Central Balkan populations of European common lizard *Lacerta vivipara*. *Biota* 5: 5–10.
- Cuadrado M, Loman J (1999) The effect of age and size on reproductive timing in female *Chamaeleo chamaeleon*. *Journal of Herpetology* 33: 6–11. doi: 10.2307/1565536
- Darevsky IS (1966) Natural parthenogenesis in a polymorphic group of Caucasian rock lizards related to *Lacerta saxicola* Eversmann. *Journal of the Ohio Herpetological Society* 5: 115–152. doi: 10.2307/1562588
- Darevsky IS (1978) Rock Lizards of the Caucasus. Smithsonian Institution and National Science Foundation & Indian National Scientific Documentation, Washington & New Dehli.
- Dexel R (1986) Zur Ökologie der Mauereidechse *Podarcis muralis* (Laurenti, 1768) (Sauria: Lacertidae) an ihrer nördlichen Arealgrenze 1. *Salamandra* 22: 259–271.
- Diaz JA, Iareta P, Verdu-Ricoy J (2012) Intraspecific variation of reproductive traits in a Mediterranean lizard: Clutch, population, and lineage effects. *Evolutionary Biology* 39: 106–115. doi: 10.1007/s11692-011-9144-5
- Eckstut ME, Lemons ER, Server DM (2009) Annual dynamics of sperm production and storage in the Mediterranean gecko, *Hemidactylus turcius*, in the southeastern United States. *Amphibia-Reptilia* 30: 45–56. doi: 10.1163/156853809787392649
- Eikhorst W, Eikhorst R, Rykena S (1979) Beobachtungen an der spanischen Kieleidechse, *Algyroides marchi* Valverde. *Salamandra* 15: 254–263.
- Elbing K (2001) Die Smaragdeidechsen: zwei (un)gleiche Schwestern. Beiheft zur Zeitschrift für Feldherpetologie 3: 1–143.
- Escarre A, Verricard JR (1981) Sarios y Ofidios. In: Cuadernos de la Fauna Alicantina I. Diputacion de Alicante.
- Flatt T, Dummermuth S (1993) Zur Kenntnis der Aspisp- oder Juraviper *Vipera aspis aspis* (L., 1758) im Kanton Solothurn. *Mitteilungen der Naturforschenden Gesellschaft Kanton Solothurn* 36: 75–102.
- Frankenberg E (1978) Interspecific and seasonal variation of daily activity in gekkonid lizards (Reptilia, Lacertilia). *Journal of Herpetology* 12: 505–519. doi: 10.2307/1563356
- Franzen M, Bussmann M, Kordges T (2008) Die Amphibien und Reptilien der Südwest-Türkei. Beiheft der Zeitschrift für Feldherpetologie 14: 1–328.

- Freundt R (2012) Drittgelege-Nachweis und weitere Beobachtungen an einer individuenreichen Population der Zauneidechse (*Lacerta agilis*) im Niederrheinischen Tiefland (NRW). Zeitschrift für Feldherpetologie 19: 175–184.
- Gabriot M, Lopéz P, Martin J (2012) Interpopulational variation in chemosensory responses to selected steroids from femoral secretions of male lizards, *Podarcis hispanica*, mirrors population differences in chemical signs. Chemoecology 22: 65–73. doi: 10.1007/s00049-011-0100-8
- Galán P (1984) Estudio sobre la biometría, diseño y coloración de *Lacerta schreiberi*, Bedriaga, 1978. (Sauria, Lacertidae). Alytes 2: 25–54.
- Galán P (1996) Reproductive and fat body cycles of the lacertid lizard *Podarcis bocagei*. Herpetological Journal 6: 20–25.
- Galán P (1997) Reproductive ecology of the lacertid lizard *Podarcis bocagei*. Ecography 20: 197–209. doi: 10.1111/j.1600-0587.1997.tb00362.x
- Galán P (1999) Demography and population dynamics of the lacertid lizard *Podarcis bocagei* in north-west Spain. Journal of Zoology London 249: 203–218. doi: 10.1111/j.1469-7998.1999.tb00759.x
- Galán P (2003a) Female reproductive characteristics of the viviparous skink *Chalcides bedriagai pistaciae* (Reptilia, Squamata, Scincidae) from an Atlantic beach in north-west Spain. Amphibia-Reptilia 24: 79–85.
- Galán P (2003b) Reproductive characteristics of an insular population of the lizard *Podarcis hispanica* from northwest Spain (Cies Islands, Galicia). Copeia 2003: 657–665. doi: 10.1643/CH-02-235R1
- Galán P (2004) Structure of a population of the lizard *Podarcis bocagei* in Northwest Spain: variations in age distribution, size distribution and sex ratio. Animal Biology 54: 57–75. doi: 10.1163/157075604323010051
- Galán P (2007) Datos sobre el crecimiento, madurez y dimorfismo sexual en una población natural de lución (*Anguis fragilis*) en el Noroeste de la Península Ibérica. Munibe 25: 164–169.
- Galán P (2008a) Efecto de la planta invasora *Carpobrotus edulis* sobre la densidad del eslizón tridáctilo (*Chalcides striatus*) en una localidad costera de Galicia. Boletín de la Asociación Herpetológica Española 19: 117–121.
- Galán P (2008b) Ontogenetic and sexual variation in the coloration of the lacertid lizards *Iberolacerta monticola* and *Podarcis bocagei*. Do the females prefer the greener males? Animal Biology 58: 173–198. doi: 10.1163/157075608X328026
- Galán P (2009) Ecología de la reproducción de los saurios ibéricos. Boletín de la Asociación Herpetológica Española 20: 1–34.
- Galán P, Vila M, Remon N (2007) Caracterización de las poblaciones de *Iberolacerta monticola* en el Noroeste ibérico mediante la combinación de datos morfológicos, ecológicos y genéticos. Munibe (Suplemento/gehigarria) 25: 34–43.
- Gil MJ, Guerrero F, Pérez-Mellado V (1994) Clutch size and reproductive frequency of *Blanus cinereus* in central Spain. Acta Biologica Cracoviensia 36: 37–40.
- Glandt D (2001) Die Waldeidechse: unscheinbar - anpassungsfähig – erfolgreich. Beiheft der Zeitschrift für Feldherpetologie 2: 1–111.
- González de la Vega F (1988) Anfibios y reptiles de la provincia de Huelva. Eds Ertisa Huelva.

- Guarino FM, Di Gui I, Sindaco R (2010) Age and growth of the sand lizards (*Lacerta agilis*) from a high Alpine population of north-western Italy. *Acta Herpetologica* 5: 23–29.
- Guillaume CP, Geniez P (1986) Descriptin d'une sous-espece de *Podarcis hispanica* (Sauria, Lacertidae): *Podarcis hispanica cebennensis*. *Bulletin de la Société Herpétologique de France* 39: 1–5.
- Günther R (1996) Waldeidechse - *Lacerta vivipara* Jacquin, 1787. In: Günther R (Ed) *Die Amphibien und Reptilien Deutschlands*. Gustav Fischer, Jena.
- Gvozdk L (2000) Seasonal activity, sex ratio, and abundance in a population of *Lacerta agilis* Linneaus, 1758 from Czech Republic. *Herpetozoa* 13: 165–169.
- Hailey A, Rose CA, Puldorf E (1987) Food consumption, thermoregulation and ecology of the skink *Chalcides bedriagai*. *Herpetological Journal* 1: 144 – 153.
- Henle K (1988) Dynamics and ecology of three Yugoslavian populations of the Italian wall lizard (*Podarcis sicula campestris* De Betta) (Reptilia: Lacertidae). *Zoologischer Anzeiger* 220: 33–48.
- Heulin B (1985) Maturité sexuelle et âge à la première reproduction dans une population de plaine de *Lacerta vivipara*. *Canadian Journal of Zoology* 63: 1773–1777. doi: 10.1139/z85-266
- Heulin B, Osenegg K, Michel D (1994) Survie et incubation des ceufs dans deux populations ovipares de *Lacerta vivipara*. *Amphibia-Reptilia* 15: 199–219. doi: 10.1163/156853894X00308
- Hofmann S (2004) Populationsbiologischen Untersuchungen an der Waldeidechse, *Zootoca vivipara* (Jacquin, 1787) in Sachsen-Anhalt und West Sachsen. Dissertation Martin-Luther-Universität Halle-Wittenberg.
- Horvathova T, Balaz M, Jandzik D (2013) Reproduction and morphology of the common lizard (*Zootoca vivipara*) from montane populations in Slovakia. *Zoological Science* 30: 92–98. doi: 10.2108/zsj.30.92
- Hraoui-Bloquet S, Sadek R, Sabeh MA (1999) The male sexual cycle of *Lacerta media* Lantz and Cyren in Mount Lebanon compared with that of *Lacerta laevis* Gray. *Bulletin de la Société Herpétologique de France* 92: 5–17.
- Ilgaz C, Baran I (2001) Reproduction biology of the marine turtle populations in Northern Karpaz (Cyprus) and Dalyan (Turkey). *Zoology of the Middle East* 24: 35–44. doi: 10.1080/09397140.2001.10637884
- Ji X, Braña F (2000) Among clutch variation in reproductive output and egg size in the wall lizard (*Podarcis muralis*) from a low land population of Northern Spain. *Journal of Herpetology* 34: 54–60. doi: 10.2307/1565238
- Käsewiter D (2002) Ökologische Untersuchungen an der Schlingnatter (*Coronella austriaca* Laurenti, 1768). Dissertation, University of Bayreuth.
- Klewen R (1988) Verbreitung, Ökologie und Schutz von *Lacerta agilis* im Ballungsraum Duisburg/Oberhausen. *Mertensiella* 1: 178–194.
- Lapini L, Richard J, Dall'Asta A (1993) Distribution and ecology of *Lacerta horvathi* Ménély, 1904 (Reptilia, Lacertidae) in north-eastern Italy. *gortania – Atti Museo Friulano di Storia Naturale* 14: 213–230.
- Lelievre H, Blouin-Demers G, Lourdais O (2011) Contrasted thermal preferences translate into divergences in habitat use and realized performance in two sympatric snakes. *Journal of Zoology* 284: 265–275. doi: 10.1111/j.1469-7998.2011.00802.x

- Locey KJ, Stone PA (2006) Factors affecting range expansion in the introduced Mediterranean gecko, *Hemidactylus turcicus*. *Journal of Herpetology* 40: 526–530. doi: 10.1670/0022-1511(2006)40[526:FAREIT]2.0.CO;2
- Luís C, Rebelo R, Crespo EG (2004) Age structure in *Lacerta schreiberi* from Portugal. *Amphibia-Reptilia* 25: 336–343.
- Malkmus R (1982) Beitrag zur Verbreitung der Amphibien und Reptilien in Portugal. *Salamanca* 18: 218–299.
- Maragou P, Valakos ED, Chondropoulos BP (1997) Comparative ecology of two sympatric lizard species, *Lacerta graeca* and *Podarcis peloponnesiaca* endemic to Peloponnisos (Greece). In: Böhme W, Bischoff W, Ziegler T (Eds) *Herpetologia Bonnensis*. SEH, Bonn, 265–271.
- Maragou P, Chondropoulos BP, Valakos ED (1999) Comparative data on reproduction in *Podarcis erhardii*, *Podarcis peloponnesiaca*, and *Podarcis taurica* (Reptilia, Sauria, Lacertidae). *Israel Journal of Zoology* 45: 487–496.
- Marco A, Pérez-Mellado V (1998) Influence of clutch date on egg and hatchling sizes in the annual clutch of *Lacerta schreiberi* (Sauria, Lacertidae). *Copeia* 1998(1): 145–150. doi: 10.2307/1447710
- Marco A, Pérez-Mellado V, Gil-Costa MJ (1994) Reproductive strategy in a montane population of the lizard *Lacerta schreiberi* (Sauria: Lacertidae). *Herpetological Journal* 4: 49–55.
- Marco A, Diaz-Paniagua C, Hidalgo-Vila J (2004) Influence of egg aggregation and soil moisture on incubation of flexible-shelled lacertid lizard eggs. *Canadian Journal of Zoology* 82: 60. doi: 10.1139/z03-209
- Martin J (2009) Lagartija Serrana- *Iberolacerta monticola*. In: Salvador A, Marco A (Eds) *Enciclopedia Virtual de los Vertebrados Españoles*. Museo Nacional de Ciencias Naturales Madrid.
- Martin J, López P, Salvador A (1990) Field body temperatures of the amphibaenid lizard *Blanus cinereus*. *Amphibia-Reptilia* 11: 87–96. doi: 10.1163/156853890X00492
- Martin J, Salvador A (1993) Tail loss reduces mating success in the Iberian rock-lizard, *Lacerta monticola*. *Behavioural Ecology and Sociobiology* 32: 185–189. doi: 10.1007/BF00173776
- Martin J, Salvador A (1995a) Microhabitat selection by the Iberian rock lizard *Lacerta monticola*: Effects on density and spatial distribution of individuals. *Biological Conservation* 79: 303–307. doi: 10.1016/0006-3207(95)00110-7
- Martin J, Salvador A (1995b) Effects of tail loss on activity patterns of rock-lizard, *Lacerta monticola*. *Copeia* 1995(4): 984–988. doi: 10.2307/1447052
- Martínez-Rica JP (1974) Contribucion al estudio de la Biología de los geconidos ibericos (Rept., Sauria). *Publicaciones del Centro Pirenaico de Biología Experimental*. 5: 1–291.
- Martin-Vallejo J, Garcias-Fernandez J, Pérez-Mellado V (1995) Habitat selection and thermal ecology of the sympatric lizards *Podarcis muralis* and *Podarcis hispanica* in a mountain region of central Spain. *Herpetological Journal* 5: 181–188.
- Meeske, M (2006) Die Europäische Sumpfschildkröte am nördlichen Rand ihrer Verbreitung in Litauen. *Beiheft der Zeitschrift für Feldherpetologie* 11: 1–160.
- Mitchell JC, Pague, CA (1990) Body size, reproductive variation, and growth in the slider turtle at the northeastern edge of its range. In Gibbons JW (Ed) *Life History and Ecology of the Slider Turtle*. Smithsonian Inst. Press, Washington, 146–151.

- Mole S (2008) An Investigation into the Effects of the Western Green Lizard (*Lacerta bilineata*) and the Common Wall Lizard (*Podarcis muralis*) Introduced onto Boscombe Cliffs, Dorset, U.K. Bachelor Thesis, Sparsholt College, Great Britain.
- Morina-Borja M, Rodríguez-Domínguez MA (2004) Evolution of biometric and life-history traits in lizards (*Gallotia*) from the Canary Islands. *Journal of Zoological Systematics and Evolutionary Research* 42: 44–53. doi: 10.1046/j.0947-5745.2003.00239.x
- Nollert A (1983) Einige Bemerkungen zur Taurischen Eidechse, *Podarcis taurica taurica* (Pallas), in Südostbulgarien. *Herpetofauna* 25: 26–29.
- Olsson M, Shine R (1997a) The seasonal timing of oviposition in sand lizards (*Lacerta agilis*): why early clutches are better. *Journal of Evolutionary Biology* 10: 369–381. doi: 10.1007/s000360050030
- Olsson M, Shine R (1997b) The limits to reproductive output: offspring size versus number in the Sand Lizard (*Lacerta agilis*). *The American Naturalist* 149: 179–188. doi: 10.1086/285985
- Orlova VF, Kuranova VN, Bulakhova (2003) Some aspects of reproductive biology of *Zootoca vivipara* (Jacquin, 1787) in the Asian part of its area. In: Ananjeva N, Tsineko O (Eds). *Herpetologia Petropolitana*, 201–204.
- Ouboter PE (1981) The ecology of island-lizard *Podarcis sicula salfii*: Correlation of microdistribution with vegetation coverage, thermal environment and food size. *Amphibia-Reptilia* 2: 243–257. doi: 10.1163/156853881X00078
- Pellitteri-Rosa D, Sacchi R, Pupin F (2012) Testing the ability to store sperm: an experimental manipulation of mating opportunities in the common wall lizard, *Podarcis muralis*. *Acta Herpetologica* 7: 111–118.
- Perera A, Pérez-Mellado V, Harris DJ (2006) Variation between populations in the diet of the Mediterranean lizard *Lacerta perspicillata*. *Herpetological Journal* 16: 107–113.
- Perez Quintero JC (1988) Biometria y reproducción del eslizon tridactilo, *Chalcides chalcides striatus* (Cuvier), en las Marismas del Odiel (Huelva). *Revista Esp. Herpetologia* 3: 15–27.
- Pérez-Mellado V, Hernández-Estévez JA, Garcá-Díez T (2008) Population density in *Podarcis lilfordi* (Squamata, Lacertidae), a lizard species endemic to small islets in the Balearic Islands (Spain). *Amphibia-Reptilia* 29: 46–60. doi: 10.1163/156853808783431587
- Peters G (1970) Studien zur Taxonomie, Verbreitung und Ökologie der Smaragdeidechsen IV. Zur Ökologie und Geschichte der Populationen von *Lacerta v. viridis* (Laurenti) im Mitteleuropäischen Flachland. *Beiträge zur Tierwelt der Mark* 7: 49–119.
- Picariello O, Cicaria G, Angelini F (1989) The annual cycle of oviduct in *Tarentola m. mauritanica* L. (Reptilia, Gekkonidae). *Amphibia-Reptilia* 10: 371–386. doi: 10.1163/156853889X00025
- Pleguezuelos JM, Feriche M (1998) Reproductive biology of the secretive Mediterranean colubrid *Macroprotodon cucullatus* in the southern Iberian Peninsula. *Herpetological Journal* 8:195–200.
- Pollo CJ, Pérez-Mellado V (1990) Biología reproductora de tres especies Mediterráneas de Lacertidae. *Mediterranea Ser. Biol.* 12: 149 – 160.
- Pollo CJ (2009a) Eslizón ibérico – *Chalcides bedriagai* Boscá, 1880. In: Salvador A, Marco A (Eds) *Enciclopedia Virtual de los Vertebrados Españoles*. Museo Nacional de Ciencias Naturales Madrid.

- Pollo CJ (2009b) Eslizón tridáctilo ibérico – *Chalcides striatus*. In: Salvador A, Marco A (Eds). Enciclopedia Virtual de los Vertebrados Españoles. Museo Nacional de Ciencias Naturales Madrid.
- Polovic L, Pesic V, Ljubisavljevic K, Cadenovic N (2013) Preliminary data on the reproductive characteristics and diet in an insular population of the lacertid lizard *Algyroides nigropunctatus*. North-Western Journal of Zoology 9 : 201–205.
- Pottier G (2005) Découverte du Lézard ocellé *Lacerta lepida* Daudin, 1802 (Reptilia, Lacertidae) et confirmation de l'existence du Seps strié *Chalcides striatus* (Cuvier, 1829) (Reptilia, Scincidae) dans les Petites Pyrénées. Bulletin de la Société. Herpétologique de France 113–114: 29–43.
- Punzo F (2001) The Mediterranean gecko, *Hemidactylus turcicus*: life in an urban landscape. Florida Scientist 64: 56–66.
- Rasilla D, Pérez-Mellado V (2004) Density dependence of the survival in the Iberian wall lizard (*Podarcis hispanica*). In: Perez-Mellado V, Riera N, Perera A (Eds) The Biology of Lacertid Lizards. Evolutionary and Ecological Perspectives. Institut Menorqui d'Estudis, 177–200.
- Rodriguez-Diaz T, Braña F (2012) Altitudinal variation in egg retention and rates of embryonic development in oviparous *Zootoca vivipara* fits predictions from the cold-climate model on the evolution of viviparity. Journal of Evolutionary Biology 25: 1877–1887. doi: 10.1111/j.1420-9101.2012.02575.x
- Rodriguez-Ruiz FJ (1976) Datos sobre la sistemática de los lacértidos de la isla de Formentera e islotes adyacentes. Boletín de la Sociedad de Historia Natural de Baleares 21: 47–75.
- Roig JM, Carretero MA, Llorente GA (2000) Reproductive cycle in a Pyrenean oviparous population of the common lizard (*Zootoca vivipara*). Netherlands Journal of Zoology 50: 15–27.
- Rúa M, Galán P (2003) Reproductive characteristics of a lowland population of an alpine lizard: *Lacerta monticola* (Squamata, Lacertidae) in north-west Spain. Animal Biology 53: 347–366. doi: 10.1163/157075603322556265
- Rugiero L (1997) On the ecology and phenology of *Chalcides chalcides* in central Italy. Herpetozoa 10: 81–84.
- Rugiero L (1995) Winter activity of a common wall lizard (*Podarcis muralis*) population in central Italy. Russian Journal of Herpetology 2: 148–152.
- Ryberg K, Olsson M, Wapstra E, Madsen T, Ujvari B (2004) Offspring-driven local dispersal in female sand lizards (*Lacerta agilis*). Journal of Evolutionary Biology 17: 1215–1220. doi: 10.1111/j.1420-9101.2004.00798.x
- Rykena S (1987) Egg incubation time and northern distribution boundary in green lizard species (*Lacerta s. str.*). In: van Gelder JJ, Strijbosch H, Bergers PJM (Eds) Proceedings of the 4th Ordinary General Meeting of the Societas Europaea Herpetologica. – Faculty of Sciences Nijmegen, 339–342.
- Saint Girons H, Castanet J, Bradshaw SD (1989) Demographie comparee de deux populations francaises de *Lacerta viridis* (Laurenti, 1768). Revue d'Écologie (Terre Vie) 44: 361–386.
- Salvador A (1978) Materiales para una 'Herpetofauna Balearica' 5. Las salamanguetas y tortugas del archipiélago de Cabrera. Doñana, Acta Vertebrata 5: 5–17.
- Salvador A, Diaz JA, Veiga JP (2007) Correlates of reproductive success in males lizards of the alpine species *Iberolacerta cyreni*. Behavioral Ecology 19: 169–176. doi: 10.1093/beheco/arm118

- Sapovaliv P (1987) Morphometry and variability of morphological characters in *Lacerta viridis* (Laurenti, 1768). *Fauna Bohemiae Septentrionalis* 12: 75–101.
- Sa-Sousa P, Vicente L, Crespo EG (2002) Morphological variability of *Podarcis hispanica* (Sauria:Lacertidae) in Portugal. *Amphibia-Reptilia* 23: 55–69. doi: 10.1163/156853802320877627
- Saveliev SS, Bulakhova NA, Kuranova VN (2006) Reproductive activity of *Lacerta agilis* and *Zootoca vivipara* (Reptilia-Sauria) in western Siberia. In: Vences M, Kohler J, Ziegler T, Böhme W (Eds) *Herpetologia Bonnensis II*, 133–137.
- Schneeweiß N (2001) Aspekte der Entwicklung und des Ausbreitungsverhaltens von Smaragdechsen in einem Ansiedlungsversuch in Brandenburg. *Mertensiella* 12: 229–240.
- Schneeweiß N (2012) Missglückter Versuch einer Ansiedlung von *Lacerta viridis* in Nordostdeutschland. *Zeitschrift für Feldherpetologie* 19: 145–164.
- Selcer KW (1986) Life-history of a successful colonizer: The Mediterranean Gekko, *Hemidactylus turcius*, in Southern Texas. *Copeia* 1986(4): 956–962. doi: 10.2307/1445292
- Serrantes P, Galán P (2007) Demografía, estado de conservación y amenazas de la población de eslizón ibérico (*Chalcides bedriagai*) de la playa de Larinio (A Coruña). *Boletín de la Asociación Herpetológica Española* 18: 15–20.
- Seva E, Escarré A (1976) El eslizón ibérico (*Chalcides bedriagai*) en el medio insular de Nueva Tabarca (Provincia de Alicante). *Mediterránea: serie de estudios sobre biología terrestre mediterránea* 1: 61–115.
- Simms C (1972) Shift in a population of northern vipers. *British Journal of Herpetology* 35: 268–271.
- Smirina EM, Ananjeva NB (2007) Growth layers in bones and acrodont teeth of the agamid lizard *Laudakia stoliczka* (Blanford, 1875) (Agamidae, Sauria). *Amphibia-Reptilia* 28: 193–204. doi: 10.1163/156853807780202512
- Stabler LB, Johnson WL, Locey KJ (2012) A comparison of the Mediterranean gecko (*Hemidactylus turcius*) populations in two temperate urban habitats. *Urban Ecosystems* 15: 653–666. doi: 10.1007/s11252-011-0216-1
- Srijbosch H (1995) Population structure and displacements in *Lacerta vivipara*. In: Llorente GA, Montori A, Santos X, Carretero MA (Eds) *Scientia Herpetologica*. SEH, Barcelona, 232–236.
- Stumpel AHP (2004) *Reptiles and Amphibians as Targets for Nature Management*. Alterra, Wageningen.
- Tomasevic Kolarov N, Ljubisavljevic K, Polovic L, Dzukic G, Kalezic ML (2010) The body size, age structure and growth pattern of the endemic Balkan Mosor rock lizard (*Dinarolacerta mosorensis* Kolombatovic, 1886). *Acta Zoologica Academiae Scientiarum Hungaricae* 56: 55–71.
- Tuniyev SA, Tuniyev BA (2008) Intraspecific variation of the sand lizard (*Lacerta agilis*) from the Western Caucasus and description of a new subspecies *Lacerta agilis mzymtensis* spp. nov. (Reptilia: Sauria). *Russian Journal of Herpetology* 15: 55–66.
- Tvrkovic N, Lazar B, Tome S (1998) The western green lizard *Lacerta (viridis) bilineata* Daudin, 1804 (Sauria-Lacertidae) in Slovenia and Croatia. *Natura Croatia* 7: 363–369.
- Újvári B, Korsós Z (1997) Thermoregulation and movements of radio-tracked *Vipera ursinii rakosiensis* in Hungary. In: Böhme W, Bischoff W, Ziegler T (Eds) *Herpetologia Bonnensis*. SEH, Bonn, 367–372.

- Vacher J-P, Presseq B, Bertrand A (2003) Découverte du Seps strié *Chalcides striatus* (Cuvier, 1829) (Squamata, Scincidae) dans le département de la Haute-Garonne. Bulletin de la Société. Herpétologique de France 105: 4–8.
- Vanhooydonck B, Van Damme R, Aerts P (2000) Ecomorphological correlates of habitat partitioning in Corsican lacertid lizards. Functional Ecology 14: 358–368. doi: 10.1046/j.1365-2435.2000.00430.x
- Vignoli L, Vuerich V, Bologna MA (2012) Experimental study of dispersal behaviour in a wall lizard species (*Podarcis sicula*) (Sauria Lacertidae). Ethology Ecology and Evolution 24: 244–256. doi: 10.1080/03949370.2011.643922
- Vogrin N (1999) Preliminary note on the morphometric differences between two populations of *Podarcis muralis* (Laurenti, 1786) and *Podarcis muralis maculiventris* (Werner 1891) in Slovenia. Natura Croatia 8: 325–329.
- Völkl W, Alfermann D (2007) Die Blindschleiche: die vergessene Echse. Beiheft der Zeitschrift für Feldherpetologie 11: 1–160.
- Völkl W, Käsewiter D (2003) Die Schlingnatter: ein heimlicher Jäger. Beiheft der Zeitschrift für Feldherpetologie 6: 1–152.
- Völkl W, Thiesmeier B (2002) Die Kreuzotter: ein Leben in festen Bahnen? Beiheft der Zeitschrift für Feldherpetologie 5: 1–159.
- Werner Y, Yehudah L (1988) Egg size and egg shape in Near-eastern Gekkonid lizards. Israel Journal of Zoology 35: 192–213.
- Zagar A, Osojnik N, Carretero MA (2012) Quantifying the intersexual and interspecific morphometric variation in two resembling sympatric lacertids: *Iberolacerta horvathi* and *Podarcis muralis*. Acta Herpetologica 7: 29–39.

Supplementary material 1

Species names used in our database and used in the Societas Europaea Herpetologica (SEH) atlas

Authors: Annegret Grimm, Ana María Prieto Ramírez, Sylvain Moulherat, Julie Reynaud, Klaus Henle

Data type: Table.

Explanation note: The table matches the species names in the SEH atlas with the updated species names used in our database. It thus provides the two species list that can be used to search the database.

Copyright notice: This dataset is made available under the Open Database License (<http://opendatacommons.org/licenses/odbl/1.0/>). The Open Database License (ODbL) is a license agreement intended to allow users to freely share, modify, and use this Dataset while maintaining this same freedom for others, provided that the original source and author(s) are credited.

Supplementary material 2

Comments on taxonomy and species coverage

Authors: Annegret Grimm, Ana María Prieto Ramírez, Sylvain Moulherat, Julie Reynaud, Klaus Henle

Data type: Tables.

Explanation note: The supplementary material consists of several tables that explain differences between our updated list of species names to the lists used by Sillero et al. (2014) in their new SEH list of species and the list of Speybroeck et al. (2010).

Copyright notice: This dataset is made available under the Open Database License (<http://opendatacommons.org/licenses/odbl/1.0/>). The Open Database License (ODbL) is a license agreement intended to allow users to freely share, modify, and use this Dataset while maintaining this same freedom for others, provided that the original source and author(s) are credited.